

The
**Northwestern
Lutheran**

SEPTEMBER 15, 1983

CONVENTION 83

Mischke re-elected
PAGE 260

New hymnal approved
PAGE 263

\$31 million budget approved
PAGE 265

World missions expand
PAGE 266

from this corner



The following lines are written by a veteran of 18 conventions of the Wisconsin Evangelical Lutheran Synod, 15 regular and three special conventions. So my observations about this convention will not, I hope, be inconsequential and, measured against 18 conventions, will be proportionate to the event.

The weather was, well, just dreadful. Memory must go back to the 1939 Watertown convention to equal the relentlessly hot and humid weather. Day after day the temperature was in the 90s. For the 400 delegates seated at tables in the huge gymnasium — the size of two standard basketball courts — there was no air conditioning. Batteries of fans were commandeered to move the air. Fans pawed gently at the air around the perimeter of the floor, but 15 feet into the auditorium there was not a stir. I grieved for the courageous souls on the convention floor, as I listened to the proceedings over a loudspeaker in the air conditioned newsroom.

“It was a good convention.” So said the veterans. The devotions, all working over some aspect of Luther, were a witness that good preaching is not dead. The essay — delivered by Dr. Siegbert Becker of the seminary faculty — was a lively, stirring, thoughtful commentary on Luther’s *Freedom of the Christian Man*.

“It was a good convention.” There was debate. Some of it sharp. Some of it surprisingly long. But speakers never forgot that they were addressing “in love” brothers committed to the cause of Jesus Christ with a devotion at least equal to their own.

“It was a good convention.” Although a great moment in God’s grace to the Synod was on everyone’s mind — the success of the Reaching Out offering, the greatest outpouring of gifts the Wisconsin Synod has ever experienced — no one was content to rest on that triumph of grace. Determined steps were taken, under God, to increase offerings for the operating budget, and action will follow the words.

“It was a good convention.” It made the decisions that had to be made. Conventions are not always that way. Some like to temporize. Not this one. It met the hymnal issue head-on. When the new hymnal appears, it will shape the form of our devotional and worship life well into the twenty-first century. Delegates sensed this responsibility as they cast their votes overwhelmingly for the new hymnal.

“It was a good convention,” above all because the Word ruled. And where the Word is, there is the Spirit of God. And where the Spirit is, there is faithfulness and wisdom and strength.

COVER: Old Main at Dr. Martin Luther College, New Ulm, Minnesota where the 47th biennial convention of the Wisconsin Evangelical Lutheran Synod was held from August 1-5. Old Main, erected in 1884, is listed in the National Register of Historic Sites.

May the Lord our God be with us
as he was with our fathers;
may he never leave
or forsake us. 1 Kings 8:57

The Northwestern Lutheran

OFFICIAL MAGAZINE OF THE
WISCONSIN EVANGELICAL LUTHERAN SYNOD

VOLUME 70 NUMBER 17
SEPTEMBER 15, 1983

Editor

James P. Schaefer

Editorial assistants

Walter W. Kleinke, Beverly Brushaber

Production

Production services by Northwestern Publishing House. Director of art and design: Harold Schmitz. Page make-up: Joy Paulbeck. Production coordinator: Clifford Koeller. Subscription manager: Jane Dallmann.

Contributing editors

Julian G. Anderson, Thomas B. Franzmann, Edward C. Fredrich, Immanuel G. Frey, Joel C. Gerlach, Richard E. Lauersdorf, Armin J. Panning, Carleton Toppe, Ernst H. Wendland

District reporters

W. Schaefer (Arizona), J. Humann (California), R. Jensen (Dakota-Montana), E. Schaeewe (Michigan), C. Degner (Minnesota), T. Bauer (Nebraska), H. Kuschel (Northern Wisconsin), J. Oldfield (Pacific Northwest), J. Huebner (South Atlantic), R. Kleist (Southeastern Wisconsin), C. Learman (Texas), D. Kipfmiller (Western Wisconsin)

Editorial office

All editorial inquiries should be addressed: Rev. James P. Schaefer, Editor THE NORTHWESTERN LUTHERAN 3512 W. North Avenue Milwaukee, Wisconsin 53208 Phone 414/445-4030

Subscriber service

For subscription service, write: Northwestern Publishing House, 3624 W. North Avenue, Milwaukee, Wisconsin 53208-0902. Allow **four weeks** for a new subscription, subscription renewal or change of address.

Subscription rates (payable in advance)

U.S.A. and Canada — **One year, \$6.00; two years, \$11.00; three years, \$15.00.** Twenty-five or more unaddressed copies sent in a bundle to one address at \$3.50 per subscription. Blanket subscription at \$4.00. All prices include postage.

All other countries — Please write for rates.

THE NORTHWESTERN LUTHERAN is available in *braille* or on *cassette* for the visually handicapped. For information, write: Workshop for the Visually Handicapped, 559 Humboldt Avenue, St. Paul, Minnesota 55107.

THE NORTHWESTERN LUTHERAN (ISSN 0029-3512) is published *semimonthly*, except *monthly* in July and December, by Northwestern Publishing House, Milwaukee, Wisconsin. Second-class postage paid at Milwaukee, Wisconsin. **POSTMASTER:** Send address changes to THE NORTHWESTERN LUTHERAN, c/o Northwestern Publishing House, 3624 W. North Ave., Milwaukee, Wisconsin 53208-0902.

Photo credits

Delmar Brick, convention photos. Stephen Randall, cover.

Good Effects, Poor Reasons

As Christians we know that we should focus on the Word of God as our guide through life to eternity. In theory we know that. In practice we are not always that spiritual. Being sinners as well as believers, we are not immune to more worldly considerations.

This being the case, we have a tendency in church life to give prime attention to aspects that demand little spiritual insight, specifically the following, which are quite generally seen as the marks of a successful church: (1) church attendance, (2) external growth, (3) money.

This focus, unwitting though it may be, has a powerful effect in shaping one's practical perception of the purpose of the church and one's perception of the work of a Christian pastor.

The church, from this point of view, should have enough money to finance all its undertakings, preferably with some left over in the treasury for unspecified needs. All pews should be filled at every service, temporary seating in the aisles for the overflow adding to the general feeling of well-being. The number of members should always increase, the faster the better. These are things which all can observe with a minimum of spiritual insight and which almost any congregation would like to experience.

Similarly, the success of the pastor can be, and unfortunately often is, appraised according to the same values. He should lead in translating such visions into reality. Along with talent, training and expertise, which are expected in the pastor, an indefinable charisma becomes essential for achieving the type of success popularly envisioned. The pastor is cast in a role which he finds it impossible to fill, to say nothing of the effect of such unrealistic expectations upon his person and upon his ministry.

Judging by standards which unspiritual people often employ, we are forced to conclude that the Apostle Paul was a failure. In some places he accomplished little or nothing. He was actually driven out of some places. By the same standards Jesus was also a failure. At one point in his ministry "many of his disciples went back and walked no more with him." This was not an uncommon experience for him. Even his relatives had uncomplimentary thoughts about him.

The fact is that many accepted notions of what a congregation should be and what a pastor should do develop from human ideas rather than from divine direction. These human ideas tend to surface as the church strives for success. For example, concerned church members regularly express a desire to improve the church attendance and to get new members. Remarkably, however, these same people may seldom express concern for the delinquents in the congregation, except as statistics, or for the eternal welfare of the unchurched. One wonders at times whether the emphasis on numbers is motivated by concern for the salvation of souls or by a desire for visible success in the church.

Some of St. Paul's contemporaries preached Christ for selfish reasons. Paul, however, found comfort in the fact that Christ was preached, even though in pretense. Apparently there was no difference in the effect upon the people.

But there was a difference between the preachers. Unlike Paul, his rivals were doing the right thing for the wrong reason. This can likewise be said of those who use the Word primarily for the purpose of making the church grow, paying the bills and filling the pews. The effect may be good, but as Samuel reminded Saul, "Man looketh on the outward appearance, but the Lord looketh on the heart." When spirituality tends to decline under practical pressures, we need that reminder too.



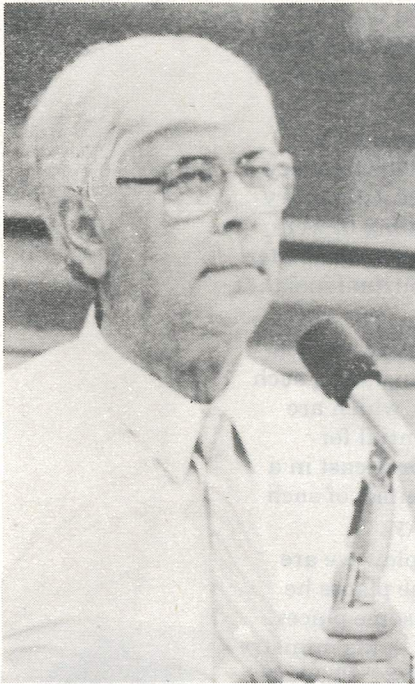
Pastor Frey
is at Zion,
Phoenix, Arizona.

Immanuel G. Frey

Mischke re-elected to third term

On the opening day of the convention delegates voted overwhelmingly to return the Rev. Carl H. Mischke, 60, of Milwaukee as president for a third consecutive term of two years.

President Mischke was re-elected on the first ballot, receiving 221 of the 286 votes cast at the Synod's



President Mischke

47th biennial convention held on the campus of Dr. Martin Luther College, New Ulm, Minnesota.

Others nominated and their vote totals were Pastor Gerald E. Free of Omaha, Nebraska, president of the Synod's Nebraska District, 18; Pastor Carl W. Voss of Green Bay, Wisconsin, president of the Northern Wisconsin District, 16; Pastor Donald F. Bitter of Fort Atkinson, Wisconsin, president of the Western Wisconsin District, 14; Pastor Marcus C. Nitz of Garden Grove, California, president of the Arizona-California District, 10; and Pastor Wayne D. Mueller of Waukesha, Wisconsin, 7.

In accepting the presidency, President Mischke told the convention that "as God grants health and strength, I will continue to serve you and him as faithfully

as I know how, with total commitment to him and his Word . . . not for my sake but for his sake, his Word, his cause, his glory, his kingdom. I ask for your continued cooperation and support, and above all, your prayers."

On a separate ballot Pastor Free was re-elected first vice president with 165 votes to 85 for Pastor Bitter and 70 for Pastor Voss.

The slate of principal officers was completed with the election of Pastor Bitter as second vice president, 156 votes to 130 for Pastor Voss, and the election of David Worgull, pastor of Calvary Lutheran Church, Chandler, Arizona as secretary. In 1982 Pastor Worgull was appointed to succeed Prof. Heinrich J. Vogel who died in office.

A native of Hazel, South Dakota, President Mischke began his ministerial career in 1947 following study at Martin Luther Academy, then in New Ulm, and Northwestern College, Watertown, Wisconsin and at Wisconsin Lutheran Seminary, Mequon, Wisconsin.

After two years as assistant pastor of First Lutheran Church, La Crosse, Wisconsin, he served five years as pastor of a dual parish, St. Peter's-St. John's, Goodhue, Minnesota. In 1954 he accepted a call as pastor of St. John's of Juneau, Wisconsin. He was elected president of the Western Wisconsin District in 1964 and subsequently served as the Synod's second vice president and first vice president before succeeding to the presidency in 1979 following the death of President Oscar J. Naumann. In the same year he was elected to his first regular term as president.

In a review of the last biennium, President Mischke called attention to the recent conclusion of the special capital fund offering which resulted in cash and pledges totaling \$23.3 million — more than twice the original goal of \$10 million as evidence of God's "amazing grace and blessing."

He exhorted Synod members to

continued efforts, saying: "We cannot live in the past. The Lord does not leave us here just to occupy space in a world that is becoming more congested by the moment, just to consume valuable energy and resources whose supply is no longer unlimited. He leaves us here because, though he has legions of angels at his disposal, he has chosen us to be his witnesses, to share with a perishing world the unsearchable riches of Christ.

"And *that* gives real meaning and purpose to our lives. *That* lifts

*"I will continue
to serve you and him
as faithfully
as I know how,
with total commitment
to him and his Word . . .
not for my sake
but for his sake,
his Word, his cause,
his glory, his kingdom."*

us above the routine and the humdrum of our daily existence. *That* enables us to view each new day of grace not as an opportunity to see how much we can wrest out of life for ourselves during the three score years and ten, give or take a few, that we call this world our home. It rather enables us to approach each new day of grace as another glorious opportunity to serve the One who has set us free, the One who loved us and gave himself for us."

President Mischke was married in 1947 to Gladys Lindloff, then a parochial school teacher in Milwaukee, Wisconsin. They have four children: Joel, principal of Good Shepherd Lutheran School, Phoenix, Arizona; Susan (Mrs. Mark Blahnik) of Sun Prairie, Wisconsin; Philip, pastor of Deer Valley Lutheran Church, Phoenix; and Steven, pastor of St. John's Lutheran Church, Battle Creek, Michigan.

Stewardship counselor installed at convention

Professor Daniel W. Malchow was installed as the Synod's stewardship counselor at the convention's closing service on Friday, August 5.

Malchow for the past year and one-half has served as director of the Reaching Out offering. Although he accepted the call as stewardship counselor in July of 1982, he was not installed in his new office until his Reaching Out duties had ended. During that period Arthur W. Schaefer, deferred giving counselor, served as acting stewardship counselor.

President Carl W. Voss of the Northern Wisconsin District preached the sermon. "The Lord has called you to your office," Voss told Malchow. "He has called you to do his work as he counsels and advises you. . . . Therefore consider carefully how you listen to his speaking to you. Only in that way will you find your labor a blessing to you and a blessing to the Synod you serve."



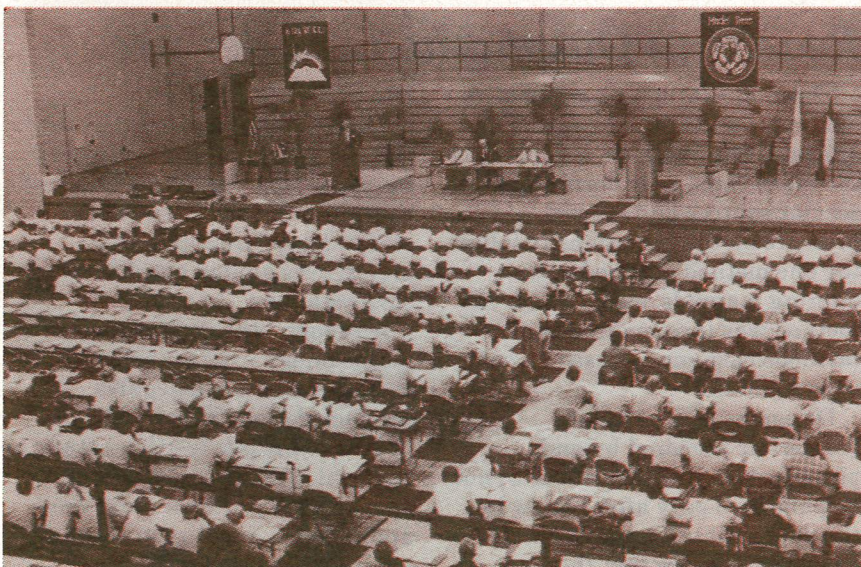
Stewardship Counselor Malchow was installed by Professor Erwin R. Scharf. Malchow is flanked by (left to right) Secretary Worgull, Second Vice President Bitter, First Vice President Free and President Mischke.

Prof. Erwin R. Scharf, em., performed the rite of installation assisted by the four officers of the Synod, President Mischke, 1st Vice President Free, 2nd Vice President

Bitter, and Secretary Worgull.

In the same service the four officers of the Synod were also installed by Prof. Scharf.

WELS 47th biennial convention well attended



The convention met at Dr. Martin Luther College, New Ulm, Minnesota from August 1-5. From the balcony visitors had a view of the convention floor in the college gymnasium.

In spite of the heat which sent the thermometer into the 90s, attendance at the convention was slightly better than in 1981.

Pastor G. Ditter of Portland, Oregon, chairman of the convention credentials committee, reported 329 voting delegates in attendance with only eight excused part time. He also reported 81 advisory delegates attending full time with four excused part time.

Only eight voting delegates were absent full time without excuse, and two advisory delegates were absent full time. At the 1981 convention held at Martin Luther Preparatory School, Prairie du Chien, Wisconsin there were 311 voting delegates and 77 advisory.

Reaching Out offering tops \$23 million

Pastor Daniel W. Malchow, director of the Reaching Out offering, reported to the delegates that commitments and cash to the offering now total \$23.8 million of which \$22.3 million is documented. Over \$5.4 million has already been distributed to the various capital funds.

He reported that 631 congregations were using the central computer system to process the commitments and 290

congregations were handling the processing of their own commitments. There were 261 congregations which had made no remittance to the offering as of June 30.

In responding to the blessings of the offering, the delegates thanked "the Lord of the church for the tremendous blessing he bestowed upon this offering by opening the hearts of his faithful people through his Holy Spirit."



Pastor Malchow

Delegates, by resolution, also thanked "the director and everyone involved in the program for their fruitful labors," and also those "whose evangelical concern led them to suggest areas of improvement in the program."

Distribution of offering reaffirmed

With the Reaching Out offering exceeding \$23 million there were several proposals before the convention asking that some of the offering be used to provide more money for the operating budget.

The 1981 synodical resolution authorizing the special offering specified that the offering was to be divided among three funds: 50% for the Educational Institution Building Fund and Educational Development Fund; 40% for the Church Extension Fund (CEF); and 10% for the World Mission Building Fund.

"Our people were approached," the August convention said, "and their gifts were committed with the understanding that they were to be used for capital expansion and divided" as directed by the 1981 convention.

President Mischke appointed a task force in April to make recommendations to the convention relative to funds over the \$15 million mark. The recommendations of the task force were accepted by the convention without amendment.

The task force recommended that the 50% beyond \$15 million in the worker-training division be divided equally between the Educational Development Fund — primarily an endowment fund — and the Educational Institution Building Fund for additional debt reduction.

In the home mission division the task force recommended that the

40% beyond the \$15 million be used to implement a plan which refunds to the operating budget one-half of the interest paid to the CEF by congregations having a CEF contract. The refund to the operating budget is justified because the Synod's operating budget subsidizes interest payments to the CEF by some mission congregations and by some former mission congregations which the mission board calls "interest subsidized congregations."

The task force finally recommended that the 10% beyond \$15 million in the world mission division be placed in its building

fund and the budgetary appropriation for this fund be eliminated.

In approving the recommendations of the task force, the convention stated that the recommendations "while remaining faithful to the purpose and intent of the offering, and abiding by the percentage division as outlined by the offering, will at the same time yield relief to the operating budget."

It was estimated that the recommendations will benefit the operating budget by \$708,000 in the first year of the biennium, and by more than \$800,000 in the second year of the biennium.

Reaching Out methods under fire

Three memorials questioned the methods used by the Reaching Out offering. The methods, according to the memorials, were borrowed from secular sources and exerted pressure on congregations to follow the one method outlined in the offering manuals, even though the method was incompatible with methods customarily used by some congregations.

Delegates affirmed that "materials prepared by and presented in the name of our Synod be published only after review by the appropriate boards of our Synod can assure that these materials adequately reflect the confessional position of our

Synod."

The convention also urged that "stewardship materials prepared for use within our Synod take into consideration the difference in stewardship structures and preferences among our diverse congregations."

Although "the cautious use of methodology from outside sources" was affirmed, the delegates instructed district stewardship boards to initiate a special study in pastoral conferences of Scriptural stewardship principles and their applications and forward the studies to the stewardship counselor for his use in preparing stewardship materials.

Delegates approve new hymnal

Several years of discussion and debate in the Synod ended at the New Ulm convention with approval of a plan to produce a new hymnbook.

The project, which may take another decade to complete, was launched by an overwhelming vote. Starting point for the volume will be *The Lutheran Hymnal*, which has been used for 40 years as the official book of worship for the Synod's 1160 congregations in all 50 states and three provinces of Canada. That book also was used until recently by congregations of the Lutheran Church-Missouri Synod.

After a two-year study the Synod's Commission on Worship recommended that the Synod "at this time begin preparation of its own new hymnal that will reflect the worship traditions and roots of our Synod and will seek to meet the present and future worship needs of our congregations."

The book also "will reflect the larger perspective and mainstream of the worship of the Christian Church," according to the resolution which delegates approved.

Heading the work will be the Commission on Worship and a full-time project director, a new position approved by the convention, to be called by the



Pastor Forrest L. Bivens of Saginaw was chairman of the floor committee which recommended the new hymnal.

Conference of Presidents. The cost will be an estimated \$50,000 annually over the next six years. Congregations and individuals were urged to communicate their desires and criteria for the book.

President Mischke reflected the tone of delegates' concerns by saying that the changes in the hymnal would be made "without compromising scriptural principles. We are interested in anything that can more effectively communicate the gospel."

Pastor Kurt J. Eggert of Atonement Lutheran Church, Milwaukee, a member of the



Pastor Kurt J. Eggert of Milwaukee, a member of the Commission on Worship, urged adoption of the new hymnal.

Commission on Worship, said the action marked the first time in its 133-year history that the Synod had undertaken a project so wide in scope.

Eggert said the hymnal would continue the tradition of hymns from the Lutheran heritage plus "a wide spectrum of sound Christian hymnody representing various ages and cultures, from the ancient Greek and Latin, hymns of the Middle Ages and the Reformation, English texts and tunes. It will attempt to incorporate the best of contemporary and American hymnody as well."

Gradual transition to new WELS hymnal

In introducing a new hymnal to the Synod, delegates instructed the Commission on Worship to be mindful of the local congregation.

The commission was instructed to send samples of prepared materials — both liturgies and hymns — to each congregation for trial use, evaluation, and response.

The resolution said that there have been numerous requests "for a gradual introduction and transition to a new hymnal." Sending samples of prepared materials to the congregations will "relieve apprehensions about the unknown" and also assist in the

acceptance of the new hymnal.

Another resolution instructed the commission to "invite and seek to involve Evangelical Lutheran Synod (ELS) representatives in the preparation of the new hymnal in a

Scholarship funds needed

The convention urged all members and congregations of the Synod to contribute to scholarship funds, such as, the Wisconsin Synod Scholarship Fund, Minority Scholarship Fund, and the Synod Scholarship Endowment Fund.

manner agreeable to both parties."

At its 1983 convention, the ELS asked its Committee on Worship to work with the WELS Commission on Worship as the commission deals with future hymnal needs.

Delegates were told that reductions in government aids and limited employment opportunities have placed additional financial burdens on students and their families in the face of rising costs to students attending the schools.

Missouri sends mixed message

The Lutheran Church-Missouri Synod gives the impression that it is sending "a mixed message" regarding its position on fellowship with other church bodies.

That was the report given by Wisconsin Synod observers who attended the Missouri Synod's convention in St. Louis in July. The observers' findings were presented to a floor committee of the convention.

The observers cited, as one example, a Missouri Synod resolution urging that priority be given "to the question of how we may give expression to the external unity of the visible church without compromising the truth of our faith and confession."

The observers said: "Such a mixed message in which you suspend pulpit and altar fellowship with a church body while joining with it in prayer and embracing its members as brothers and sisters in Christ is possible and even inevitable when altar and pulpit fellowship are distinguished from other expressions of fellowship including prayer."

The report added: "While there was considerable concern at the convention to hold a conservative, Biblical stance, there was little evidence that the (Missouri Synod) position and practice in matters of

fellowship are moving toward improved understanding and application of Biblical fellowship principles and practices. There was a time when conservative Missourians understood and even shared our fellowship doctrine. That no longer seems to be the case."

A resolution was adopted expressing regret regarding the lack of understanding. Nevertheless the resolution asked the Synod's Commission on Inter-Church Relations to keep itself abreast of future developments in relations with the Missouri Synod and to keep the Synod's membership informed.

Two actions by the Missouri Synod convention were described by the Wisconsin Synod observers as of special interest and worthy of response at a later time. One encouraged the president of the Missouri Synod to work toward the formation of a new agency structured so that all Lutheran bodies in this country would feel free to join. The other directed the Missouri Synod president in the next three years to encourage the convening of free Lutheran theological conferences for Lutherans in North America and throughout the world.

Advocates of the latter resolution

called for placing a higher priority on restoration of fellowship with former sister churches of the Missouri Synod such as the Wisconsin Synod and the Evangelical Lutheran Synod than "with nominally Lutheran churches which deliberately embrace the historical-critical destruction of Biblical and confessional authority."

"Comments on the implications of these resolutions will need to await information on the manner in which the Missouri Synod will implement them," the observers said.

"Some questions do already come to mind. What objectives would such an organization have? Can we relate in a significant way to a possible successor of the Lutheran Council in the U.S.A.? Would devotions be a part of the meetings? What guidelines will determine participation in the envisioned free conferences? Will they be conducted in a framework of fellowship? What kind of agenda will be set up? What will be the objectives of these meetings?"

Workshops encouraged

The Stewardship Board was authorized to conduct regional workshops in the spring of 1985. The workshops will be targeted at the needs of parish pastors, but may also include participation by appropriate laypersons.

The resolution pointed out that pastors have a vital role in organizing and executing stewardship programs and there is a need for improved stewardship efforts in the Synod congregations.

A 1979 resolution of the Synod authorizing the same kind of workshops was not carried out because of budgetary shortages.

Commission service recognized

The convention in a special resolution recognized Professor Carl J. Lawrenz, em., for serving on the Commission on Inter-Church Relations for 39 years, almost 25 of which he served as chairman. The convention gave Lawrenz a standing vote of thanks as he closed his years of service.

Delegates made Lawrenz a lifetime member of the Commission as a consultant. Delegates were told that Lawrenz could render valuable service to the Commission "in view of the extensive background of information" which he has accumulated over the years in dealing with Lutheran church bodies.



Professor Lawrenz



President George M. Orvick brought greetings to the convention from the Evangelical Lutheran Synod.

\$31 million budget approved

On Friday morning, August 5, just before adjournment, the delegates adopted a two-year budget of \$31 million running from July 1, 1983 to June 30, 1985.

In the first year of the biennium the budget calls for expenditures of \$14.9 million and in the second year an expenditure of \$16.1 million. This was substantially the budget recommended to the convention by the Coordinating Council.

To fund the budget it will require increases in congregational budget subscriptions averaging eight



Pastor Donald W. Meier of St. Paul, Minnesota was chairman of the convention's floor committee on finances.

14 new congregations

Fourteen congregations were received into membership of the Synod, including the Synod's first organized congregation in Vermont — Christ the Redeemer of Barre. Only two were in the Central States — Shepherd of Peace, Worthington, Ohio and Good Shepherd, Novi, Michigan — traditional stronghold of WELS churches.

Fifty-two pastors and 40 teachers were also received into membership.

Pastors, teachers and congregations are received into membership by the Synod convention in odd-numbered years. In the even-numbered years they are received into membership by the district conventions.

percent in 1984 and also in 1985.

Sixteen projects were approved by the convention but deferred subject to funding by the Coordinating Council and the Board of Trustees. The 16 projects are the cost of creating two new districts, increased subsidy to area Lutheran high schools, hymnal makeready costs, a campus pastor for the University of Minnesota in the Twin Cities, and also one for the Milwaukee and Waukesha areas.

Also included in the 16 projects are the 16th and 17th missionaries for the Lutheran Church of Central Africa, the world mission worker-

training counselor, the fourth missionary for Hong Kong, the Brazil exploratory team, a stepped-up school visitation program, the Youth Ministry Committee of the Board for Parish Education, a health insurance stop loss provision, a stepped-up ministry by mail, and an executive secretary for evangelism.

In addition to these new projects there remains unfunded \$1.4 million in requests from divisions in the first year and \$1.5 million in requests from divisions in the second year of the biennium, most of which was intended for ongoing or expanded programs.

Trustees special report

The chairman of the Synod's Board of Trustees, Pastor Carl S. Leyrer of Milwaukee, presented a special report to the convention on the current status of the operating fund.

"At the close of the 1982 fiscal year, June 30, 1982," Leyrer reported, "the Synod was burdened with a budgetary deficit of \$421,000. In contrast, at the close of fiscal 1983, June 30, 1983, the deficit was eliminated and we enjoyed a balance of \$184,000 . . . This was the first time we closed a fiscal year with a positive balance since June 30, 1978.

"It should be noted," he said, "that the improved financial picture did not result from a sharp increase in budget subscription offerings. In fact, these offerings were \$230,000 less than anticipated.

"Other receipts were greater than anticipated — gifts, bequests, etc. — and careful stewardship by operating divisions resulted in savings. Both of these compensated for the shortfall in budget subscription offerings."

To maintain this year's reduced level of expenditures, he said, "will require an 8% increase in budget subscriptions for 1984 and for 1985. Reductions in appropriations resulting from the Reaching Out

offering will give only minimal help."

He pointed out that budget subscriptions in the recent past have been a major factor in our budgetary problems. "It is certainly apparent that our congregations should be exhorted, in love for Christ, to do everything possible to increase these offerings."



Professor Paul E. Kelm of Wisconsin Lutheran College, Milwaukee, follows the action at the convention.

New children's magazine urged

According to a resolution of the 1981 convention, the 63-year old Junior Northwestern, a children's magazine, ceased publication at the end of 1981. Cost and declining readership were cited for ending the publication.

Delegates were told that the Board for Parish Education is exploring the feasibility of a new children's periodical.

World mission program expands

In 1883 the Wisconsin Synod took the first steps in establishing a world mission program. Noting this 100th anniversary of the occasion, the convention authorized a number of steps to increase the Synod's world mission tempo.

Three missionaries were authorized, two for the Lutheran Church of Central Africa (Zambia and Malawi), and one for Hong Kong. The latter was a renewal of authorization.

Noting that the continued growth of the 26-year-old Japan sister mission church "compels serious consideration of the calling of its eighth missionary to the field," the convention commended the actual authorization of the missionary to the 1985 convention.

Pastor Leonard J. Koening of Plymouth, Michigan, who served the world board for the past 15 years, retired from the board at this convention.



The Board for World Missions was authorized to call a worker-training counselor subject to funding by the Coordinating Council and the Board of Trustees.

The counselor, who had been requested by the board, is primarily to plan, implement, and conduct in-service theological training seminars in areas of the world in which the Synod has no expatriate missionaries as, for example, the Cameroon.

In addition the counselor is to serve as a resource to other mission fields as these fields develop their own seminaries and Bible schools. The counselor is also to orient newly called missionaries to the world mission fields.

The work assigned the counselor, the convention said, can no longer be carried on with part-time assistance — seminary professors, parish pastors, and former and

present missionaries — "because they already have full-time responsibilities in their ministries."

Delegates voted overwhelmingly to continue to subsidize the Synod's sister mission church in Mexico. While wrestling with the budget, the Coordinating Council informed the world mission board that "it considers the time appropriate to discontinue work in Mexico." It was the opinion of the Coordinating Council that other world fields needed the funds more urgently than Mexico.

In declining to discontinue the subsidy to Mexico, the convention cited the need for a clear gospel witness in the country; Mexico's proximity to the United States; its expanding population; and its close economic ties with the United States. It also referred to recent gains in spite of many difficulties: five national pastors, 338 baptized members, and 71 communicants.

"The work in Mexico," the convention said, "reflects our concern and interest in working among the ever-increasing Hispanic population in the United States — our largest minority group."

Delegates authorized an exploratory team for Brazil and instructed the board to report to the 1985 convention with its recommendations.

In 1979 the world board had reported to the convention that Brazil "appeared to be a country of vast mission potential, and that further evaluation was warranted." The convention authorized an exploratory team, but the resolution was never carried out because of budget cutbacks.

NWL blanket subscriptions urged

Delegates urged all congregations to provide blanket or bundle subscriptions to The Northwestern Lutheran for all their members.

Delegates said that "the devotional, educational and informational articles in the magazine are worthy of increased

To commemorate the 500th anniversary of Luther's birth the convention authorized a radio broadcast to the nearly two million ethnic Germans in Central Asia who have been deprived of the services of all ordained Lutheran pastors. Most of the Germans had been deported to Central Asia from the Ukraine immediately preceding World War II.

New land program approved

The convention approved a plan for advance mission site acquisition. Often when missions look for sites the land has already been designated for commercial or residential use and the cost is prohibitive. Under the new plan, land will be bought for future use before commercial or residential development has started.

The new plan, an integral part of the Church Extension Fund, will be funded over a five-year period with money from the Reaching Out offering. Ultimately \$2.5 million will flow into the new plan. No borrowed money will be involved in the new plan and it will be self-sustaining.

Delegates were told that the new plan is a wise investment of newly available capital funds and will result in smaller debt service costs for new missions.

The Board of Trustees was instructed to appoint an initial board of directors for an Advance Mission Church Site Fund before the end of the year.

readership and use within the Synod."

The convention also pointed out that blanket and bundle subscriptions are more cost-effective than individual subscriptions and would reduce the amount of subsidy required from the synodical budget.

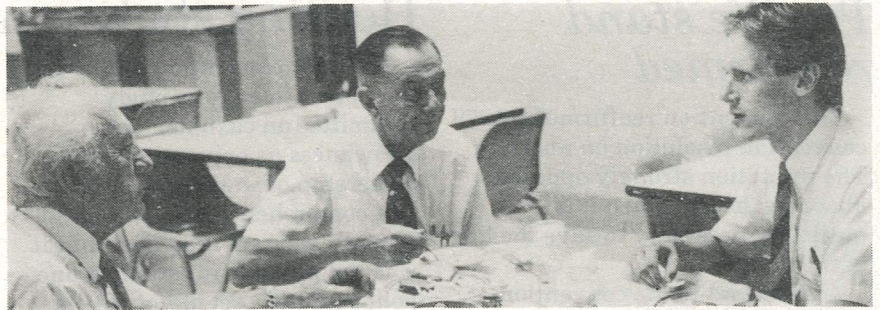
Two new districts

Delegates voted to create two new districts, the North Atlantic District and the South Central District, bringing the number of districts to 12. Delegates were told that the formation of these districts "will make supervision of doctrine and practice more immediate and effective and will reduce the problems of distance and travel costs" for conferences and meetings.

The South Central District will be composed of Wisconsin Synod congregations in Oklahoma, Arkansas, Texas and Louisiana west of the Mississippi River. In these states there are over 35 congregations.

The North Atlantic District will be composed of congregations in Ontario, Quebec, Northeastern Canada, Maine, Connecticut, Massachusetts, Rhode Island, New Jersey, Delaware, New Hampshire, Vermont, New York and Virginia. There are about 30 congregations in these states.

It is expected that the new districts will be organized sometime in the fall of 1983 under the supervision of the Synod president.



Max P. Lehninger, Jr. (left), chairman of the pension board lunches with Pastor Paul G. Hartwig, chairman of the group insurance board and Pastor Hartwig's son, John, who has been called as missionary to the Lutheran Church of Central Africa.

Pensions benefits increased

Delegates rejected a proposed supplementary defined contribution pension plan which would have permitted a worker covered by the Synod's pension plan to enhance his or her retirement benefits by individual contributions to the worker's pension account and matched by the worker's calling body by an amount not to exceed two percent of the worker's annual salary.

The current pension plan is non-contributory and is funded by contributions of congregations. The size of a congregation's contribution depends on the number of workers. In 1983 the contribution was \$225 per worker per year.

The convention said that the present plan is inadequate in meeting the needs of the retirees. In 1983 retirees were receiving \$5 per month per year of service.

The convention voted an increase in the per worker contribution by the congregations from \$225 to \$300 beginning January 1, 1984, and from \$300 to \$375 beginning January 1, 1985.

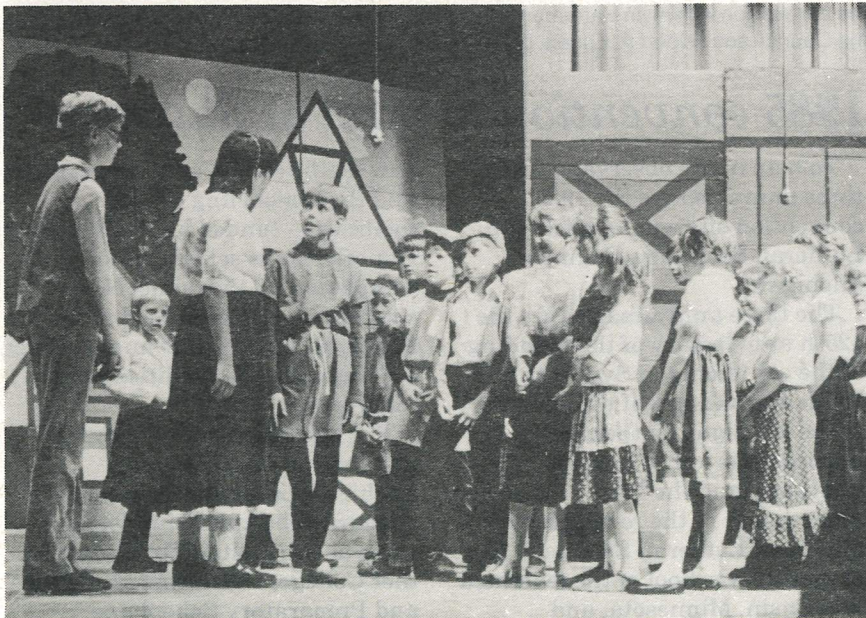
The first increase raised the benefits to the retirees from \$5 per month per year of service to \$6.30. The second increase raises the benefits to \$7.25 per month per year of service. The increases are retroactive, covering all those who presently are receiving a pension.

Two campus pastors added

In a move to strengthen the Synod's campus ministry, delegates authorized the calling of a full-time campus pastor for the University of Minnesota, Minneapolis and St. Paul.

A second full-time campus pastor was authorized for the Milwaukee and Waukesha area. He will serve the University of Wisconsin-Milwaukee, Carroll College, Waukesha, and technical training institutions in the Milwaukee area.

The resolution said that the need for a full-time ministry had been proven in both fields by the use of part-time vicars. Further confidence in the future of the fields was expressed by assigning two 1983 seminary graduates to a one-year call in the two areas.



Students from St. Paul Lutheran School, New Ulm, presented the musical drama "Martin Luther" for the convention.

Pro life stand reaffirmed

The convention reaffirmed a 1979 convention resolution on abortion. The resolution strongly opposed abortion "except when it is medically necessary to save the life of the mother."

A memorial to the convention questioned the exception. The exception, the memorial said, "is open to possible misinterpretation and is not substantiated by Scriptural reference."

A convention committee pointed out to the delegates that current literature published by the Synod contains this exception and the exception is therefore not a departure from the Synod's public stance. The committee further pointed out that nothing in the memorial "proposes that this exception is anti-Scriptural" and that the "exception is clear and precise."

Synodical pay adjusted

Noting that "workers are worthy of their hire" and "the cost of living continues to increase" delegates voted salary increases over the next two years to the Synod's called workers.

The increases affect teachers in mission schools, pastors serving mission congregations, professors in the Synod's six worker-training schools, missionaries, and executive secretaries.

There will be an increase of two percent in their base salaries effective January 1, 1984. On July 1, 1984 there will be an increase of four percent in their base salaries, and effective July 1, 1985 there will be another four percent increase in the base salaries.

Salaries in the salary schedule range from \$11,400 for a starting teacher in a mission school to \$20,344 for the president of the seminary. In addition to the salary, housing is also provided for the worker, together with health insurance, telephone, and a subsidy for utilities.

Housing study continues

The 1981 convention authorized the appointment of a study committee on cash housing allowances as opposed to Synod ownership of workers' homes.

A comprehensive survey of the Synod's workers indicated that it was not possible to establish one policy and one set of guidelines which would meet the needs of all departments of the Synod.

The study concluded that the question of whether or not called workers should own their own homes is primarily a financial decision that must be made by the

individual worker and his calling body after careful consideration.

The convention authorized the preparation of a handbook by the fiscal office which explains the economic implications of worker-owned housing and provides information on equity allowances for those who live in church-owned housing. The handbook is to be reviewed by the 1984 district conventions.

The convention asked the 1985 convention to implement an equity allowance for Synod workers who live in church-owned homes.



Pastor Henry W. Grigsby (right) of Milwaukee, a 52-year veteran of the ministry, discussed the convention with Alvin Haferman (left), Wisconsin Rapids, a member of the Coordinating Council and Rupert A. Eggert, pastor of a Hispanic congregation in Tucson, Arizona.

1985 convention to meet at Saginaw

To help in the observance of three anniversaries the 1985 convention site will be Michigan Lutheran Seminary, Saginaw, Michigan.

The three anniversaries are the 125th anniversary of the founding of the old Michigan Synod, the 100th anniversary of the opening of the Michigan Lutheran Seminary as a theological seminary, and the 75th anniversary of the re-opening of Michigan Lutheran Seminary as a preparatory school of the federated Wisconsin, Minnesota, and Michigan synods.

The delegates were told that the

new facilities — a new gymnasium and the remodeling of older facilities — funded by the Reaching Out offering is scheduled for completion by that time. No convention has been held at Michigan Lutheran Seminary since 1967 because the facilities were inadequate.

The resolution said the cost of holding the convention at Michigan Lutheran Seminary appears to be approximately the same as other sites (Dr. Martin Luther College, Northwestern College and Preparatory School and Martin Luther Preparatory School).

Evangelism post funding urged

The convention authorized the calling of an executive secretary of evangelism, reaffirming a 1981 convention resolution. The General Board for Home Missions in consultation with the Commission on Evangelism was authorized to do the calling. The Coordinating Council and the Board of Trustees were urged to give "this position high priority for funding."

The executive secretary — in a change from the 1981 resolution — will also be responsible for the mass media ministry now supervised by the home mission office.

The resolution cited the need for a full-time man in coordinating and organizing continuing evangelism efforts in congregations throughout the Synod and in the expanding work of the mass media ministry.



Delegates attended communion at the opening service at St. Paul's, New Ulm.

1983 convention elections

1. Officers of the Synod

President: Rev. Carl H. Mischke
1st Vice President: Rev. Gerald E. Free
2nd Vice President: Rev. Donald F. Bitter
Secretary: Rev. David Worgull

2. Division of Administration and Services

Board of Trustees, Chairman: Rev. Carl S. Leyrer
Board of Trustees: Mr. Kenneth Gosch, Rev. Jon M. Mahnke, Mr. Robert Raasch, Rev. Ralph E. Scharf, Rev. Neal D. Schroeder, Mr. Arvid Schwartz
Coordinating Council: Mr. Mel A. Koch, Mr. John D. Steudel

3. Division of Home Missions

General Board for Home Missions, Chairman: Rev. Daniel M. Gieschen
Special Ministries Board: Rev. Edgar M. Herman, Mr. Richard G. Raabe, Mr. Clarence W. Saatkamp

4. Division of Worker Training

Commission on Higher Education, Chairman: Rev. Kurt J. Eggert
Commission on Higher Education: Prof. Wayne M. Borgwardt
Wisconsin Lutheran Seminary, Board of Control: Rev. Marcus L. Birkholz, Mr. Norbert Ehlert, Rev. Edward G. Zell, Sr.
Dr. Martin Luther College, Board of Control: Rev. Warren J. Henrich, Teacher Darrell C. Knippel, Rev. Clarence Koepsell
Northwestern College and Northwestern Preparatory School, Board of Control: Mr. George Reul, Rev. Alan

H. Siggelkow, Rev. David A. Tiarks

Martin Luther Preparatory School, Board of Control: Rev. David A. Fischer, Teacher Dale E. Markgraf
Michigan Lutheran Seminary, Board of Control: Teacher Jerold E. Meier, Mr. George Reschke, Rev. Lynn A. Schroeder

Board for Parish Education: Teacher Robert W. Adickes, Rev. Forrest L. Bivens, Prof. James A. Fricke, Teacher William R. Habermann, Mr. James A. Wade

5. Division of World Missions

Board for World Missions, Chairman: Rev. William A. Meier
Executive Committee for Latin American Missions: Rev. Harold A. Essmann
Executive Committee for the Lutheran Apache Mission: Rev. Frederic H. Nitz
Executive Committee for the Lutheran Church of Central Africa: Rev. David E. Kock
Executive Committee for the Lutheran Ev. Christian Church in Japan: Rev. Ronald F. Freier
Executive Committee for Southeast Asia Missions: Rev. Daniel H. Koelpin

6. Miscellaneous Administrative Boards

Board of Support: Rev. Winfred B. Nommensen, Rev. Clare L. Reiter
Northwestern Publishing House, Board of Directors: Mr. Herman P. Gieschen, Rev. Robert C. Hartman, Prof. Paul E. Kelm

With the Lord

Hilbert L. A. Engel 1901 — 1983

Pastor Hilbert L. A. Engel was born September 16, 1901 at McMillan, Wisconsin and died July 4, 1983 at Saline, Michigan.

A 1926 graduate of the seminary he served Zion in Chesaning and Christ in Brady Township, Saginaw County, Michigan before accepting a call to Trinity in Saline, Michigan, where he served until his retirement in 1969.

During his ministry he served the Synod in various offices: conference visitor; on the executive board for Indian Missions several years before becoming chairman of the board from 1949-1955; vice president of the Michigan District, 1956-1957; chairman of the Michigan District Mission Board, 1957-1963; and chairman of the General Board for Home Missions, 1963-1967.

In 1937 he married Amelia Schmiege. He is survived by his wife; two daughters, Anita (Mrs. Gerald) Snyder and Karol Ann (Mrs. David) Feldkamp; sister, Mrs. Robert Metzger; brother, Pastor Norman; and five grandchildren.

The funeral services were held July 7 at Trinity, Saline.

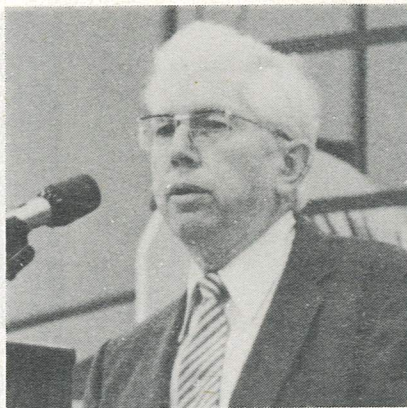
Olga Schlegel 1898 — 1983

Mrs. Olga Schlegel, widow of Pastor Gustave Schlegel, died on July 17, 1983 at the age of 85.

Pastor Schlegel served congregations in Bylas, Arizona; Hazelton, North Dakota; and rural Watertown and Mobridge-Glenham, South Dakota.

Mrs. Schlegel is survived by a son, Paul; a daughter, Dorothea (Pastor Immanuel) Frey; 11 grandchildren and 17 great-grandchildren.

The funeral services were held on July 21 at Zion, Mobridge, South Dakota. □



Missionary Richard A. Poetter speaking to the 1983 Synod convention.

Looking back

as reported in *The Northwestern Lutheran*

50 years ago . . .

In Poland the work is progressing very satisfactorily. We have eleven fields in that country, served by the director, Pastor W. G. Bodamer, and seven other pastors. The number of souls increased in the past year from 1377 to 2213, that of communicants from 956 to 1500 and that of voting members from 313 to 533.

25 years ago . . .

"By the grace of God," Missionary Richard Poetter reports, "we have arrived safely in Japan and are settling in a house here in Tokyo about five minutes drive from the (Richard) Seegers. We received a royal welcome from the Seegers and spent our first days here at their home."

10 years ago . . .

Tuesday night, August 14, 1973 will be a night long remembered by the delegates to the WELS convention at Dr. Martin Luther College. On that night Pastor Roger Sprain, Pastor Ernest Zimdars and Teacher Francis Warner were commissioned as our first missionaries to South America.

135th ANNIVERSARY

St. John's Lutheran Church, 8th and Vliet Streets in Milwaukee, Wisconsin will celebrate its 135th anniversary on Sunday, September 25 with a special service at 3:00 p.m. The speaker will be Professor Armin W. Schuetze with special music by the Lutheran Chorale of Milwaukee, under the direction of Pastor Kurt J. Eggert, and guest organist Mrs. Lynn Koslowsky. Regular services are held at 9:00 a.m. (German) and 10:30 a.m. (English). St. John's is the oldest WELS congregation organized within the original city limits, prior to the annexation of Granville.

NOTICES

The deadline for submitting items for publication is five weeks before the date of issue

CHOIR ROBES

Twenty-four black choir robes are available for cost of shipping from Zion Lutheran in Peshigo, Wisconsin. Contact Pastor Timothy Meier, 221 S. Ellis Ave., Peshigo, WI 54157; phone 715/582-3093.

WANTED

An eight-volume set of Eckhardt's *Real-Lexikon* (Homiletisches Reallexikon nebst Index Rerum); F. Webber, *A History of Preaching* (3 volumes). Contact Pastor Rick Curia, Box 723, Newcastle, CA 95658; 916/652-6004.

NEW WELS CHURCHES

Names Requested

In recent months the Wisconsin Synod began work in the states and cities listed below. Please send all names of members who moved into the general area of these cities, as well as names of people who may be interested in a Wisconsin Synod mission, to:

WELS MEMBERSHIP CONSERVATION
3512 W. North Ave., Milwaukee, WI 53208

Names as well as pertinent information regarding members referred will be forwarded to the nearest pastor and/or mission board chairman.

Alaska	Juneau*
	Kenai
	South Anchorage*
	Wasilla*
Arizona	Apache Junction*
	Green Valley*
Arkansas	Russellville*
California	Clovis*
	Poway*
	Rancho Cucamonga*
Colorado	N. E. Denver*
	S. Denver*
Florida	Cape Coral*
	Coral Springs*
	Daytona Beach*
	Miami (Spanish)*
	S. Orlando*
	Lehigh Acres*
Georgia	N. Atlanta*
	Warner/Robbins/Perry*
Idaho	Boise*
Louisiana	Baton Rouge*
Maine	Portland*
Michigan	Novi*
	Traverse City*
Mississippi	Columbus*
Missouri	St. Charles County*
Nebraska	Kearney*
New Mexico	W. Albuquerque*
New York	Poughkeepsie*
	Rochester*
	Springville*
North Carolina	Charlotte*
	China Grove*
Ohio	Dublin/Worthington*
	Marietta*
	N. E. Cincinnati*
Oregon	Medford*
South Dakota	Milbank*
Texas	Ablene*
	Allen/Plano*
	Arlington*
	Killeen*
	Lewisville*
	N. W. Houston*
	San Angelo*
	S. Austin*
	S. W. Fort Worth*
	Sugarland*
	Tyler*
Vermont	Barre*
Virginia	Manassas*
	Parkersburg*
	Roanoke*
Wisconsin	Antigo*
	Chippewa Falls*
	Hayward*
	Merrill*
	New Richmond*
	S. Waukesha*
Wyoming	Casper*
	Gillette*
Alberta	Calgary*
	Red Deer*
Ontario	Toronto*

*Denotes exploratory services.

CHORUS RECORD AVAILABLE

A record of the Northwestern College touring chorus homecoming concert is available at a cost of \$6.25 plus \$1.00 for postage and handling. Send your prepaid orders to Prof. Gary Baumler, Northwestern College, 1300 Western Avenue, Watertown, WI 53094. Make checks payable to the college.

150th ANNIVERSARY

The oldest member congregation of the Wisconsin Ev. Lutheran Synod, Salem Ev. Lutheran Church, Ann Arbor, Michigan, is celebrating its 150th anniversary on four Sundays — August 21, September 18, October 16, and November 20, 1983. This congregation and its pastor, Friedrich Schmid, began the Michigan Synod which later merged with the Wisconsin Ev. Lutheran Synod. Salem has the distinction of being the first Lutheran congregation in Michigan and the base from which many other congregations in Michigan were established by Pastor Schmid, 20 of which are still members of our Synod. We invite the Synod to rejoice with us on this occasion, giving thanks to our God for his grace and mercy, and praying for his continued grace and guidance in the future.

**WISCONSIN LUTHERAN SEMINARY
AUXILIARY
Eleventh Annual Meeting**

All women of WELS congregations are cordially invited to the eleventh annual WLSA meeting to be held on October 1 at Wisconsin Lutheran Seminary, Mequon, Wisconsin. Registration and a coffee hour will begin at 9:00 a.m. The meeting will begin with a worship service at 10:00 a.m. The day's activities will conclude at 4:00 p.m. Reservations should be made by September 23, 1983. Send \$6.00 (includes dinner) to the WLSA corresponding secretary, Mrs. Daniel Johannes, 1736 Mill Road, Jackson, Wisconsin 53037, payable to Wisconsin Lutheran Seminary Auxiliary. Include your name, address, telephone number, church membership and pastoral conference.

ADDRESSES

(Submitted through the District President)

Pastors:

- Heiges, William D., 609 Center St., Ashland, OH 44805
- Henke, Howard, em., 8442 Shaver Rd., Portage, MI 49002, 616/323-2413
- Henning, Timothy, 8631 Peppertree Lane, Knoxville, TN 37923, 615/694-8409
- Himm, Dennis J., 7950 Normandy Lane, Centerville, OH 45459, 513/434-9876
- Kiecker, Peter, 15566 Marjorie, Baton Rouge, LA 70816
- Lintner, Joel, 1919 Malvern St., St. Paul, MN 55113
- Putz, David, 526 Springwood Dr., Little Rock, AR 72211; 501/224-8530; Off. 501/224-2042
- Runke, William E., 420 S. Park Lane, Le Sueur, MN 56058, 612/665-2194
- Scheibe, Richard A., 516 Greenwich Dr. NE, Roanoke, VA 24019, 703/362-1198
- Schleis, Paul D., 145 High St., Elkton, MI 48731; 517/375-2783
- Schmidt, Thomas, 12425 E. 31st St., Tulsa, OK 74145; 918/664-4964; Off. 918/663-2356
- Sloan, Roger, 1820 - 18th St., Zephyrhills, FL 34248; 813/788-5427
- Smith, Dennis, 622 Metcalf, Imlay City, MI 48444; 313/724-7855
- Smith, Thomas, 3227 SW 7th Ave., Cape Coral, FL 33904
- Steffenhagen, Robert W. em., 141 N. Chestnut #120, Green Bay, WI 54303
- Tullberg, Keith C., PO Box 386, Eitzen, MN 55931; 507/495-3158
- Voss, David A., 521 N. Apollo Rd., River Falls, WI 54022; 715/425-0023
- Woldt, Michael A., 15920 S. Hemlock Rd., Oakley, MI 48649; 517/845-2600
- Ziemer, Carl, 577 East Ave., Box 232, Zumbrota, MN 55992

Teachers:

- Dahlberg, David L., 1624 S. Poplar, Tulsa, OK 74012; 918/258-7386
- Schultz, Daniel D., 2594 Cohasset Ct., Decatur, GA 30034
- Sievert, Scott R., 102 Highway 4, Plymouth, NE 68424; 402/656-5735
- Veter, Gordon, 215 N. Swain, Redwood Falls, MN 56283; 507/637-3268

CONFERENCES

- Dakota-Montana District**, Western Conference, September 27 at Elgin, ND. Agenda: What do the Confessions say about Confession and Repentance? Daniel, Does Scripture Prohibit the Communing of Infants? Titus 2: What Were the Communing Practices of the Early Christian Church (30-1500 AD)?
- Michigan District**, District Teachers' Conference, October 5-7 at St. Peter School, Plymouth. Agenda: Workshops, seminars, business meetings, reports; "Luther's Creativity in Solving the Educational Problems of His Day"; "The Teaching Church — The Church's Responsibility for Christian Education."
- Michigan District**, Southeastern Conference, September 19 at Trinity, Saline. Agenda: The Spirit of Lutheranism; Luther and the Jews; Habakkuk 2:4, Romans 1:17, Galatians 3:11, Hebrew 10:38.
- Minnesota District**, Mankato Conference, October 4 at St. Peter's, St. Peter, Minnesota. Agenda: Ezekiel; Article XI, Formula of Concord — Predisposition.
- Nebraska District**, Rosebud Conference, October 11 at St. John, Herrick, South Dakota. Agenda: "The Place of Reason in the Theology of Luther"; "Encouragement for Our Congregations from Revelation 2 and 3."
- Northern Wisconsin District**, Fox River Valley Conference, September 20 at Emanuel, Forestville. Agenda: Jude, "Keys to Evangelical Congregational Development."
- Southeastern Wisconsin District**, Metro-North Conference, September 19 at Salem (Cramer Street), Milwaukee. Agenda: 1 Corinthians 14:1-25; Scripture Study; the Special Task of the Pastor; Revitalizing the Youth Ministry in the Congregation.
- Southeastern Wisconsin District**, Metro-South Conference, September 19 at Christ, Milwaukee. Agenda: Mark, "The Compatibility of the Objectives and Practices of Fraternal Benefit Societies with Scriptural Fellowship Principles."

INSTALLATIONS

(Authorized by District President)
Ordained and Installed

Pastors:

- Henning Timothy, as pastor of Shepherd of the Hills, Knoxville, Tennessee on July 24, 1983 by J. Guse (SA)
- Himm, Dennis J., as pastor of Resurrection, Centerville, Ohio on June 26, 1983 by H. Kuske (MI)
- Kiecker, Peter, as pastor of exploratory mission, Baton Rouge, Louisiana on July 10, 1983 by M. Bitter (SA)
- Lintner, Joel, as campus pastor of University of Minnesota, Minneapolis and St. Paul, Minnesota on July 17, 1983 by M. Petermann (MN)
- Putz, David, as pastor of King of Kings, Little Rock, Arkansas on July 17, 1983 by M. Putz (NE)
- Runke, William E., as pastor of Grace, Le Sueur, Minnesota on July 31, 1983 by O. Lindholm (MN)
- Scheibe, Richard A., as missionary to Roanoke, Virginia area on July 10, 1983 by J. Luetke (MI)
- Schleis, Paul D., as pastor of Trinity, Elkton, Michigan on July 24, 1983 by J. Stern (MI)
- Sloan, Roger, as pastor of Emmanuel, Zephyrhills, Florida on July 17, 1983 by R. Johnston (SA)
- Smith, Thomas, as pastor of exploratory mission in Cape Coral, Florida on June 26, 1983 by M. Smith (SA)
- Tullberg, Keith C., as pastor of Zion, Eitzen and St. Peter, Caledonia, Minnesota on July 10, 1983 by E. Stelter (MN)
- Voss, David A., as pastor of Faith, River Falls, Wisconsin on July 24, 1983 by C. Voss (MN)
- Woldt, Michael A., as pastor of Christ, Oakley, Michigan on July 17, 1983 by J. Behringer (MI)

Installed

- Heiges, William D., as pastor of Our Savior, Ashland, Ohio on August 21, 1983 by D. Schultz (MI)
- Schmidt, Thomas, as pastor of Mt. Olive, Tulsa Oklahoma on July 24, 1983 by M. Frey (NE)
- Smith, Dennis, as pastor of Christ, Imlay City, Michigan on July 10, 1983 by T. Wilsman (MI)
- Ziemer, Carl, as pastor of Christ, Zumbrota, Minnesota on July 24, 1983 by A. Kienetz (MN)

Teachers:

- Corona, Frank J., as principal and teacher at St. Peter, Sturgeon Bay, Wisconsin on July 24, 1983 by J. Mattek (NW)
- Dahlberg, David L., as principal and teacher at Mt. Olive, Tulsa, Oklahoma on July 31, 1983 by T. Schmidt (NE)
- Schultz, Daniel D., as principal and teacher at Sola Scriptura, Decatur, Georgia on July 31, 1983 by W. Fischer (SA)
- Sievert, Scott R., as principal and teacher at St. Paul, Plymouth, Nebraska on July 24, 1983 by J. Frank (NE)
- Vetter, Gordon, as teacher at St. John's, Redwood Falls, Minnesota on July 24, 1983 by D. Kehl and B. Terrell (MN)

125th ANNIVERSARY

St. John's Lutheran Church, Slades Corners, Wisconsin will celebrate its 125th anniversary with special services on September 25, October 9, October 16 and October 23. A congregational dinner will be served on October 23 at 11:30 a.m. All former members, confirmants and friends are cordially invited to attend. Nonmember reservations for the dinner should be made no later than October 2. Contact Mrs. Bernice Karow, Route 7, Box 287, Burlington, Wisconsin 53105; 414/539-2509.

**DR. MARTIN LUTHER COLLEGE
LADIES AUXILIARY
24th Annual Meeting**

An invitation is extended to all women of WELS to attend the 24th annual meeting of the DMLC Ladies Auxiliary at Dr. Martin Luther College, New Ulm, on Wednesday, October 12. The registration and coffee hour will begin at 9:00 a.m. Babysitting service will be provided for small children if you wish to bring them for the day. The opening service is at 10:30 a.m. and the business meeting will conclude at 3:15 p.m. A noon luncheon will be served and during the business meeting projects to be carried out during the coming year will be selected. You may send your gifts to help carry out these projects to the treasurer, Mrs. Marley Kuckhahn, Box 88, Gibbon, MN 55335. Make all checks payable to DMLC Ladies Auxiliary.

**The Northwestern Lutheran
SUBSCRIBER SERVICE**

- NEW SUBSCRIPTION RENEWAL
- For new subscription print name and address below. Allow 4 weeks for delivery of first copy. For subscription *renewal* include current mailing label to insure prompt and proper extension.

Subscription Rates (payable in advance)
 1 year \$6.00 2 year \$11.00 3 year \$15.00
 Save by subscribing for 2 or 3 years.
 Please write for foreign rates.

- CHANGE OF ADDRESS
- Allow 6 weeks for change. Attach current mailing label and enter your new address below.

- QUESTION OR COMPLAINT
- Include your mailing label when writing to us about your subscription.

Mail to: THE NORTHWESTERN LUTHERAN
c/o Northwestern Publishing House, 3624 W. North Ave., Milwaukee, WI 53208-0902
Phone (414) 442-1810

Make check or money order payable to Northwestern Publishing House.

Name (please print) _____ Zip _____
 Address _____ State _____
 City _____

ATTACH LABEL HERE

If mailing label is not available, print OLD address in this space.

Name (please print) _____ Zip _____
 Address _____ State _____
 City _____



by Ernst H. Wendland

Missionary Robert L. Sawall, a 1959 seminary graduate, accepted a call to Indonesia in January 1979. Because of difficulty in securing a visa, however, it was not until early April 1982 that he was able to enter the country. During those three-plus years he continued to serve Shepherd of the Plains, Lubbock, Texas.

A recent letter from an old friend, Missionary Robert Sawall, describes his language learning experience in Indonesia. Missionary Bob writes from the city of Bandung, where he is attending the Inter-Mission Language and Cultural Center in order to learn "Bahasa Indonesia," the Indonesian language. At this institute he is separated from home and any kind of American influence so that he can "immerse himself totally" in the language and culture of a strange society.

This means starting all over again as far as language is concerned. As Bob describes it, one becomes a learner to the extent that one feels like a child in kindergarten, groping to find one's way into entirely new situations by means of completely different ways of communication. The language learner is placed into the position of a child who listens, recognizes sounds, and then automatically reproduces these sounds in an effort to be understood by others.

The method is strikingly different from learning

Latin, Greek or Hebrew by means of all sorts of vocabulary lists and grammatical rules at Northwestern College or Seminary. The difference, of course, lies in a matter of learning how to speak a living language over against learning how to read and translate a dead language — Latin, Greek, Hebrew. Learning to speak Indonesian means engaging in all sorts of floundering attempts at communicating, making mistakes, becoming a servant of others in order to learn how to serve them. It is language learning at its most difficult, but at its best.

Missionary life has always involved a challenge out of the ordinary. Years ago pioneer missionaries explored new territories and struggled for survival under primitive circumstances. Nowadays missionaries are still surmounting barriers, but these are more of a cultural and linguistic nature.

It is always reassuring that there are people like Bob Sawall who are still willing to accept this challenge. Bob writes that he is encouraged by the prospect of reaching out to his classmates with Christian witnessing even while in the process of learning. One of his classmates, in fact, has agreed to be instructed in the teachings of the Christian religion.



Professor Wendland teaches homiletics and Old Testament at Wisconsin Lutheran Seminary, Mequon, Wisconsin.