



LAITY DAY

THE NORTHWESTERN

Lutheran

September 12, 1971

1971 CONVENTION ISSUE

Editorials

THE RIGHT APPROACH

The divinely established approach to matters of faith and life is set forth in II Timothy 3:16,17: "All Scripture is given by inspiration of God and is profitable for doctrine, for reproof, for correction, for instruction in righteousness, that the man of God may be perfect, thoroughly furnished unto all good works." Consequently the Christian's search for answers to religious questions is prefaced by the question, "What saith the Scripture?"

Among members of historically conservative synods, including our own, there is another approach which is not unheard of and which could unwittingly be substituted for the Biblical one. It is usually couched in the question, "What is the stand of the Synod?" This is a legitimate question in attempting to ascertain the position of a church body, but it is a dangerous approach in seeking solutions in matters of doctrine and practice.

There is somewhat of a temptation to look to the Synod for a "ruling" in matters which can be decided on

the basis of the Word of God. It is easier to do that because it shifts the responsibility to someone else. It is safe because your ecclesiastical brethren are less likely to criticize you. But it is dangerous to assume divine inspiration and inerrancy for statements beginning with the words, "The Synod's stand is . . ."

There is no passage in the Bible which reads, "The Synod hath spoken, and all the people shall say, Amen." Accordingly, our Synod will remain strong only if our people continue to search the Scriptures rather than look to the Synod for a "ruling."

IMMANUEL FREY

A MOTHER'S FINEST OPPORTUNITY

Scientists for the Medical Research Council in Aberdeen, Scotland, fitted 25 three-year-olds with jackets equipped with microphones and radio transmitters. Everything the children and their mothers said was picked up by the children's microphones and recorded on tape. It was found that an average day's conversation between mother and child can total as much as 15,000 words.

If these three-year-olds were typical, much of the conversation revolved around such remarks as "Whatcha doin', Mom?" "Why can't I play outside?" or "Johnny hit me."

But certainly the scientists learned that mothers and children also talked about things that are part of life's basic pattern—why what we say or do is wrong or why it is right, how to get along with other people, how to perform our tasks.

Christian mothers would have made God a part of every day's work and play and would have endeavored to make the Lord Jesus even more precious to their child than they themselves yearned to be.

As many as 15,000 words a day exchanged between a mother and her child! What an opportunity to shape that child's thinking about the bewildering world it is entering, to form its character to meet the stresses that will test it, to remind it to remember its dear Father in heaven and the blessed Lord Jesus in all that it says and does!

Should a Christian mother sacrifice any of her greatest educational and spiritual opportunities to influence her child's life by turning the child over to a day-care center or to a neighborhood baby-sitter—for a new refrigerator, or a speedboat, or a color TV?

CARLETON TOPPE

The Lord our God be with us, as he was with our fathers: let him not leave us, nor forsake us. I Kings 8:57

The Northwestern Lutheran

*

Volume 58, Number 19

*

September 12, 1971

Official Publication, Wisconsin Evangelical Lutheran Synod

Published biweekly by Northwestern Publishing House, Milwaukee, Wisconsin. All **BUSINESS CORRESPONDENCE** is to be directed to:

Northwestern Publishing House
3624 W. North Avenue
Milwaukee, Wisconsin 53208

Second-class postage paid at Milwaukee, Wisconsin.

Subscription rates, payable in advance: One year, \$2.50; Three years, \$6.50; Five years, \$10.00.

A 20% discount is allowed on the one-year rate if 25 or more unaddressed copies are sent in a bundle to one address.

Allow four weeks for change of address and renewal order. Give your old address as well as the new. Send stenciled address from a recent issue or an exact copy.

The deadline for submitting materials intended for publication in *The Northwestern Lutheran* is five weeks before the date of issue. Address all items intended for publication to:

Rev. Harold E. Wicke, Editor
The Northwestern Lutheran
3624 W. North Avenue
Milwaukee, Wisconsin 53208

THE EDITORIAL BOARD—Rev. Harold E. Wicke, Editor; Rev. Walter W. Kleinke, Assistant Editor; Prof. Wilbert R. Gawrisch; Prof. Armin W. Schuetze.

CONTRIBUTING EDITORS—

F. Blume E. Fredrich J. G. Frey J. Gerlach P. Janke
P. Nitz A. Panning J. Parcher C. Toppe K. Vertz

COVER—Laity Day at the Wisconsin Evangelical Lutheran Synod Convention—August 7, 1971.

Forty-First Convention

of the

Wisconsin Ev. Lutheran Synod

AUGUST 4-11, 1971

NORTHWESTERN COLLEGE

Watertown, Wisconsin



We believe

and therefore speak

The 1971 Convention of the Wisconsin Ev. Lutheran Synod was quiet and peaceful. Its peace was not one of apathy, but the peace of a Christ-centered life. A spirit of joy and adventure prevailed among the delegates as they went about their tasks as a church committed both to purity of doctrine and to sharing the Gospel with others. The convention adopted far-reaching resolutions on fellowship, issuing an invitation to all those who wish to remain true to the Word to unite and to work together. It supported the role of its academies in the worker-training system which it has followed for over 100 years. It took courageous steps to restructure the funding of the Church Extension Fund so that new missions might be housed and clothed without undue delay. Most thrilling of all was the resolve—the Lord granting grace—to bring the Word to our neighbors to the south by beginning mission work in South America.

In order to share with you the spirit of the convention and its major decisions, this issue of **The Northwestern Lutheran** is dispensing with most of its usual columns and offering you instead seven reports especially prepared for you by delegates who were present at the convention. An eighth report, which deals with what these decisions mean for the pocketbook of WELS Christians, will be brought in the next issue. Our thanks to the brethren who prepared these reports.

Evangelism was the pervading issue of the convention. Its Theme was "We Believe . . . and therefore Speak." May this be our motto as God's children!

PASTOR GLENN H. UNKE OF IMMANUEL EV. LUTHERAN CHURCH, MANITOWOC, WISCONSIN, REPORTS ON GOD'S WORD IN USE AT THE CONVENTION:

"WE BELIEVE... and therefore SPEAK"



Northwestern College Chapel — Morning Devotions

KEYNOTE SOUNDED

Pastor Ernst Wendland, head of the Seminary and Bible Institute of the Lutheran Church of Central Africa, delivered the sermon in the opening service on Wednesday, August 4, at St. Mark's Ev. Lutheran Church, Wauwatosa, Wisconsin. In his inspiring message, based on John 9:4, he laid before the delegates the urgency of doing the Lord's work "while it is day." Developing the theme of his sermon, "The Lord's Work Is Urgent Business," he stressed the importance of the work itself and the fact that the time in which to do it is a limited time.

Referring to the typical attitude of the Africans toward time, Pastor Wendland said: "In Africa it is always an hour past midnight!" Then he added, that this spirit of delay and procrastination dare not prevail in our Synod. The Lord has given us much work to do in many areas, and this work must be done! Urgency was the keynote he sounded for the delegates. Motivated by the Word and assured in their personal faith by the reception of Christ's Supper, the delegates set out to do the work of the convention to the glory of the Lord.

DAILY DEVOTIONS

Each session was begun with a devotional service which directed the delegates to the work of EVANGELISM. These devotions were conducted by the members of the Commission on Evangelism. The general theme of the convention, "We Believe and therefore Speak," was constantly before the delegates, not only in the huge display of the theme in the convention hall, but in the various pertinent passages used as texts for these devotions. Every phase of the Synod's work was treated—Christian Education, Part-time Agencies, Home Missions, World Missions, Worker-Training. Each devotion stressed

the thought that we who believe and cling to the truths of our Lord's precious Word are thereby prompted to speak that Word. The morning devotions were conducted in the College chapel; the "church atmosphere" was a real inspiration at the beginning of each day's work. The eagerness of the delegates to do the Lord's work was also evident in their vigorous and forceful singing. As each chaplain stressed a particular phase of the Synod's work, the convention theme, "We Believe and therefore Speak," resounded again and again!

The afternoon devotions were readings from the Holy Scriptures which presented various situations in which the Word was proclaimed and believed. In each case, joy in their newfound faith moved the believers to profess their faith before others—Evangelism in action! The convention devotions served as a source of strength and inspiration to work ever more energetically for the Lord.

ESSAYS PRESENTED

Two forceful essays presented the general convention theme. The essay read by Professor Armin Schuetze of



Essayists: Prof. A. Schuetze and Prof. D. Malchow

our Wisconsin Lutheran Seminary was entitled: "WE BELIEVE—The Theology of Evangelism." The second essay, "THEREFORE WE SPEAK—Evangelism in Practice," was given by Professor Daniel Malchow, president of Northwestern Lutheran Academy, Mobridge, South Dakota.

Professor Schuetze unfolded the theology of Evangelism under the heading, "Faith is a Compelling Power in Evangelism" I. Because of what we believe, II. Because of the characteristics of what we believe, and III. Because of what faith makes of us.

In the first part Professor Schuetze clearly and simply defined the word "believe." "It means to accept as true.

But it means much more than that. It means to trust, to depend upon, to rely upon. Believing is something the mind and heart do. But it isn't just any kind of believing that leads to evangelism. We believe, that is, we believe the Gospel, we trust in Christ, we rely upon His Word and promises. In other words, what we believe is important." He concluded his essay with this stress: "Faith compels us to **speak**. Faith compels us because of what faith makes of us" — Children of the Father, Branches in Christ, Temples of the Holy Ghost, Priests of a King.

The second essay, "THEREFORE WE SPEAK — Evangelism in Practice," was presented by Professor Malchow using three key words as the parts: I. Preparation, II. Program, III. Passion.

He stressed that a proper preparation for the work of Evangelism is a careful study of the Holy Scriptures and an acquaintance with methods or procedures to be used in reaching the unchurched. However, when an organized evangelism program is adopted by the members of a congregation, one other factor must be present — Passion. Passion for souls is motivated by love for Christ! Each believer is to be a witness to Christ. He concluded his essay with the soul-searching statement: "Apart from those who suffer from severe mental illness or severe mental retardation, none of us lacks the gifts necessary to 'speak the truth in love.'"

A FAREWELL WORD

The closing service was held in Trinity Ev. Lutheran Church, Watertown, Wisconsin, on Tuesday evening, August 10. Pastor Gerald Free, president of the Nebraska District, preached the sermon. His text was I Corinthians 15:58. He brought the delegates a stirring message under the theme: "The Call of the Lord to Us as a Synod" — it is a Call to Fight, a Call to Work, and A Promise of Blessing. He stressed once more the general theme of the convention and urged the delegates to go home and



Pastor Gerald E. Free Preaching the Closing Sermon

share this precious truth with their fellow members: "**We Believe and therefore Speak.**" A strong admonition to contend for the faith, to fight for the truth of God's pure Word was directed to the hearers. The battle is worth the struggle, for the Gospel is the power of God unto salvation to every one that believeth! It will, however, involve **work!** To contend for the faith is work — but glorious work! — a work in which every believing Christian should be engaged all the days of his life. This work will never be in vain, for the Lord promises that He will bless every effort when it is made to the glory of His name.

The convention closed at 10:00 P.M. on Tuesday, August 10, with a final word from President O. J. Naumann. He thanked God for the privilege of serving in His vineyard and asked each delegate to share this gratitude with him. Adjournment followed, and a last look at the general theme of the 41st Biennial Convention, spelled out in huge letters — "**We Believe and therefore Speak!**"

May God bestow His blessing on the work done by this convention!

PROFESSOR MARTIN R. TOEPEL, PRESIDENT OF MICHIGAN LUTHERAN SEMINARY, SAGINAW, MICHIGAN, REPORTS ON:

ADMINISTRATION, MEMBERSHIP, and CONSTITUTIONAL MATTERS

OUR PRESIDENT REPORTS

In the inspirational section of his biennial report, President Oscar J. Naumann sounded a vibrant call to the members of our Synod to remain faithful to the sound, Scripture-based, confessional position of the former Evangelical Lutheran Synodical Conference of North America, and urged us as individual believers and as a confessional Lutheran Synod to respond gladly and willingly in word and action to our Lord's great commission: "Ye shall be witnesses unto Me." May our response translate into action the words of the convention theme, taken from Psalm 116 and quoted by Paul in II Corinthians 4: "**We also believe, and therefore speak!**"

Doctrinal Unity

In pointing to the fact that no doctrinal controversy is disturbing our church body, President Naumann stressed that this is not said in a spirit of self-satisfaction, complacency, or smugness, but related as a miracle wrought by our gracious God and Savior. It deserves to be mentioned in order that all who hear this or who may read it in years to come may take note of what God can do and has done in His boundless love for you and me, yes, for our entire membership. It calls attention to the undeserved grace and blessing which the Lord has showered upon our Synod. "It is He, and He alone, who has been the unifying power in our midst. It is He, and He alone,



President O. J. Naumann Reporting to the Convention

who has in this day of doctrinal indifference, which is the dominant spirit of the ecumenical movement, kept our Synod faithful to a sound, Scripture-based, confessional position," he emphasized.

Personal Evangelism Stressed "The knowledge of His gracious guidance in this matter ought to fill our hearts and lips with songs of praise and thanksgiving, and surely, the Lord has preserved unto us His Word of Life for just such a day as this," he continued, pointing to the fact that in unprecedented numbers groups of concerned Christians at home and abroad are turning to us for spiritual guidance and assurance, coveting the messengers of Christ trained by God-fearing men at our divinity schools, craving the preaching and teaching of men who can affix God's seal of approval to their message by demonstrating from Holy Scripture: "Thus it is written; thus saith the Lord."

In emphasizing the theme of the convention: "We Believe, and therefore Speak," President Naumann pointed out that for many years our Synod had struggled with the problem of confessional fidelity. Then followed a period of years during which our entire educational system came in for careful review and analysis, accompanied by noteworthy efforts to give our worker-training schools both the facilities and the manpower with which to do the job we were asking them to do. During these years our mission program both at home and abroad began to expand, and now the time has come seriously to increase our efforts in personal evangelism. He concluded with the words: "May God in mercy grant that we boldly and confidently undertake a synodwide evangelism effort, guided by the Evangelism Commission of each of the nine Districts, trusting in our Lord's promise that our witnessing for Him will bring forth fruit and that this fruit shall remain! Let us beseech Him to give us a childlike faith and the readiness to confess that faith before all our fellow men."

Membership In speaking about the new laborers who each year enter the work of our Synod, President Naumann said: "Time and again one hears members of our congregations express joy over the

caliber of the candidates that are sent into their pulpits and their classrooms. One must by all means agree with them and then point out how grateful we must also be for the faculty members who train these young men and women and present them to the Church as candidates who are not ashamed of the Gospel of Christ, but are eager to teach others the truth that has made them free."

Eighty-three new full-time workers in the kingdom of our Lord were received into the Synod at this convention, as well as 20 congregations from 15 states — including the state of Hawaii — and two provinces of Canada. The convention resolved to extend a hearty welcome to these new members and to sing hymns of praise to our King for making them a part of our Christian fellowship and joining us in proclaiming the Gospel of Christ.

CONSTITUTIONAL MATTERS

The proliferation of standing committees to an almost unmanageable number had led our Synod already in the 1969 convention to begin to streamline the administrative structure. The 1971 convention continued this streamlining by dissolving the Planning Board for Educational Institutions, the Committee on Pastor-Teacher Recruitment, and the Board for Student Aid, as presently constituted, and entrusting the functions of these committees to the Commission on Higher Education.

Stewardship Board In order to make the Board for Information and Stewardship more representative of all areas, the convention voted that the board be composed of the chairmen of the nine District Boards for Information and Stewardship, plus one layman from each of the three District boards in Wisconsin. The name was also changed simply to "Stewardship Board."

Commission on Periodicals As part of the streamlining process, the 1969 convention had abolished the Committee on Circulation of Periodicals, but had not spelled out how some of its duties were to be taken care of. The 1971 convention resolved that the editorial boards of the respective periodicals (*The Northwestern Lutheran*, *Wisconsin Lutheran Quarterly*, and *Junior Northwestern*) be constituted as a Commission on Periodicals, and be given responsibility for budgeting, for promotional programs, and for the coordination of publication efforts.

District Membership of Retired Workers District membership of our retired workers, not heretofore clearly designated in the constitution of the Synod, was spelled out in a resolution to the effect that retired pastors, professors, and male teachers are to retain membership in the District in which they last served or, upon their request, have their membership transferred to the District in which they reside.

Executive Committee for Southeast Asia Since our mission work in the Orient has spread to Indonesia and India, it was resolved to change the name of the Executive Committee for Chinese Missions to "Executive Committee for Southeast Asia." This name more fully reflects the entire scope of the work of this committee.

Other Resolutions In various other resolutions the convention voted that the chairman of a Mission District Mission Board be a voting member of the General Board for Home Missions; that the Special Ministries Board, presently consisting of only five men, be augmented by the addition of one pastor and one layman; and that the calling of men to serve full time in specified offices of the Synod conform to the procedure outlined in the Synod's Bylaws, section 8.05. This would include the publishing of a list of candidates for such offices, so that members of the Synod might have an opportunity to express themselves regarding the qualifications of the proposed candidates.

ELECTION RESULTS

Officers of the Synod

President: Pastor Oscar J. Naumann
 First Vice-President: Pastor Carl H. Mischke
 Second Vice-President: Pastor Manfred J. Lenz
 Secretary: Professor Heinrich J. Vogel

Elected from Slate Nominated by the Nominating Committee

Chairman, General Board for Home Missions
 Pastor George Boldt

Chairman, Board for World Missions
 Pastor Raymond H. Zimmermann

Executive Committee for the Apache Indian Mission
 Pastor Frederic Nitz

Executive Committee for Latin American Missions
 Pastor Harold Essmann

Executive Committee for Japanese Mission
 Pastor Karl Bast

Executive Committee for the Lutheran Church of Central Africa
 Pastor Gerhard Horn

Executive Committee for Mission in Germany
 Mr. Herman Meyer

Executive Committee for Southeast Asia
 Pastor Leonard Koening

Chairman, Board of Trustees
 Pastor Elton Huebner

Northwestern Publishing House Board of Directors
 Pastor D. H. Kuehl
 Pastor Robert Hartman
 Mr. Herman Gieschen

Board for Parish Education
 Dr. Alfred Schoenauer

Area High School Representative
 Prof. Robert Adickes

Coodinating Council
 Mr. Max P. Lehninger Mr. John Steudel

Special Ministries Board
 Mr. Richard Raabe

Chairman, Commission on Higher Education
 Pastor Kurt Eggert

Area High School Representative —
 Commission on Higher Education
 Pastor Robert Krause



Above (left to right): Newly elected: Secretary H. Vogel, First Vice-President C. Mischke, President O. J. Naumann, and Second Vice-President M. Lenz.



Right: Pastor P. Hanke, St. Peter, Minnesota, retiring after serving ten years as secretary.

Elected from Slate Nominated by the Districts

Wisconsin Lutheran Seminary Board of Control
 Pastor Emil Toepel
 Pastor Edward Zell
 Mr. Norbert Ehlert

Dr. Martin Luther College Board of Control
 Pastor Otto Engel
 Pastor G. Jerome Albrecht
 Teacher Gerhard Bauer

Northwestern College Board of Control
 Pastor Ralph Goede
 Pastor Jonathan Mahnke
 Mr. George Reul

Martin Luther Academy Board of Control
 Pastor Thomas Henning
 Dr. Melvin Dumke

Northwestern Lutheran Academy Board of Control
 Pastor Nathan Engel Mr. Wilfred Bauer

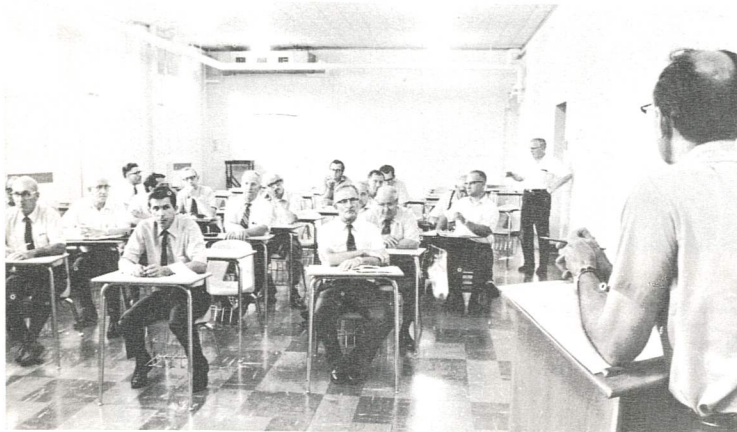
Michigan Lutheran Seminary Board of Control
 Pastor Kenneth Vertz
 Teacher Milton Bugbee
 Mr. George Reschke

Board of Support
 Pastor Walter Oelhafen, Sr.
 Pastor W. B. Nommensen

Board for Parish Education
 Professor Jerome Spaude
 Teacher Paul Zimmermann
 Professor Armin Panning

Board of Trustees
 Pastor Norbert Paustian Mr. Charles Caskey
 Pastor Marvin Putz Mr. Marvin M. Schwan

DOCTRINAL MATTERS



Chairman D. Bitter and the Floor Committee on Doctrinal Matters

Without a doubt the high point or climax of the 1971 Wisconsin Synod convention was the decision to begin work in a new continent, South America. Tears of happiness and deep emotion could be seen in the eyes of many as this resolution was adopted without a dissenting vote. This was truly helping to put into practice that portion of the convention motto which read: "Therefore we Speak!"

At the same time, however, the convention delegates never lost sight of the basic motivation behind such actions to reach out to others with the precious Gospel. Before them, above the platform, were always visible the words: "We Believe"—that is, we believe in Jesus Christ and in His precious Word of Salvation. They were conscious of the fact that the Lord does not only commission His Church: "Enlarge the place of thy tent, and let them stretch forth the curtains of thy habitation . . . lengthen thy cords," but at the same time also exhorts: "Strengthen thy stakes!" (Isa. 54:2.) While being sincerely concerned at all times about sharing the Gospel of forgiveness through the blood of Christ, the Church must be sure to hold fast to the Word of God in all its purity, for no church can continue to be a missionary church unless it clings to the teachings which it seeks to share with others.

During the convention the Synod took action on 13 resolutions submitted by its Floor Committee on Doctrinal Matters. The delegates were conscious of the fact that the Lord expects of those who by His grace have the truth to take steps both to retain the true doctrine and unity of faith, and also to take God-pleasing action whereby true church fellowship, based on unity in the teachings of the Bible and the Lutheran Confessions, may be established with those with whom we are not at present one in the faith.

Mission Affirmations

The Synod commended its Commission on Doctrinal Matters for having prepared an analysis of the Mission Affirmations of The Lutheran Church—Missouri Synod,

pointing out that in this document accepted by our former sister synod there was found among other things little evidence of an appreciation for the vital relationship between the Church's mission and faithful adherence to God's sacred Word in all its parts.

Evangelical Lutheran Synod

The convention urged the continuation of the annual meetings of representatives of our Synod and of our sister synod, the Evangelical Lutheran Synod, in the Evangelical Lutheran Confessional Forum for the purpose of renewing and strengthening the ties of fellowship and for doctrinal discussions.

Ecumenical Move

Remembering the many blessings which were enjoyed in the former Synodical Conference which was dissolved as a result of the doctrinal deterioration on the part of The Lutheran Church—Missouri Synod, our Wisconsin Synod in a Scripturally ecumenical spirit encouraged its Commission on Doctrinal Matters to arrange for a consultation with orthodox Lutheran synods around the world aimed at the formation of a worldwide Synodical Conference.

FAL The convention also took note of the fact that a group of members and former members of The Lutheran Church—Missouri Synod have established an organization known as Federation for Authentic Lutheranism (FAL) for the avowed purpose of preserving with God's help the Scripturally sound position which once was their heritage as members of that synod. The Synod asked its Commission on Doctrinal Matters to keep itself informed concerning this effort to form a new synod and to make arrangements for a meeting with representatives of this federation.

LCR It was reported that a federation of congregations known as the Lutheran Churches of the Reformation, whose representatives had met with ours for several years, found itself unable to accept our doctrinal position on the church and ministry and had urged its congregations not to practice fellowship with the members of our Synod. Taking note of the fact that the members of this federation have given evidence of the desire to adhere strictly to the Sola Scriptura (Scripture alone) principle, the Synod expressed its regret concerning the action taken by the LCR and instructed its Commission on Doctrinal Matters to undertake a joint study of the Scripture texts involved in these doctrines with their representatives, should that church body declare itself willing to do so.

CLC Our Synod also declared that it is our sincere desire to remove differences with the Church of the Lutheran Confession and to establish fellowship with this synod composed largely of congregations, pastors, and teachers who broke fellowship with us several years before we suspended fellowship with The Lutheran Church—Missouri Synod. Since face-to-face discussions have stalled, apparently on matters of procedure, it was

resolved that our Commission on Doctrinal Matters pursue every God-pleasing avenue of approach to resume fellowship discussions, giving consideration to the possibility of a personal meeting with representatives of the CLC to arrive at an acceptable procedure.

Lutheran Free Churches Several resolutions were adopted with regard to four Lutheran Free Churches in Germany. The Church of the Evangelical Lutheran Confession (CELC), which has been directly connected with our Synod, was encouraged to stand fast in its commitment to its Scripture-based confessional stand, especially in view of its proximity to the three other Lutheran Free Churches who are in the process of effecting a merger to form a new Lutheran church body.

The convention was made aware of the fact that the Evangelical Lutheran Free Church (formerly known as the Saxon Free Church) with which we have been in fellowship for many years had rejected the Missouri Synod action regarding fellowship with the American Lutheran Church, and had declared itself unable to look upon this resolution as binding for itself. Calling attention to the fact that in its 1971 convention The Lutheran Church—Missouri Synod has continued on its unscriptural course, the convention encouraged its sister synod to take decisive action with regard to its fellowship with The Lutheran Church—Missouri Synod.

The Evangelical Lutheran (Old Lutheran) Church is a third Free Church in Germany with whom we are in fellowship as a result of doctrinal discussions held in Germany. Since it has continued its fellowship with The Lutheran Church—Missouri Synod in spite of having accepted sound doctrinal theses of agreement which speak clearly on such matters as the inspiration, authority, and inerrancy of the Holy Scriptures, our Synod expressed concern at its failure to take action with regard to its fellowship with The Lutheran Church—Missouri Synod. The convention furthermore stated that such continued fellowship on the part of any of the Free Churches in Germany endangers our fellowship with the separate bodies and would also prevent fellowship with the new body that may be established in the proposed merger.

The third party in the proposed merger of the Free Churches in Germany is the Independent Evangelical Lutheran Church, a synod with which we have not formally established fellowship. However, since this is one of the parties in the proposed merger involving two synods with which we are in fellowship, our Synod authorized its Commission on Doctrinal Matters to press for a meeting with representatives of this church body. The basic issue upon which the meeting is to focus is the question: Are we jointly committed to the entire Scripture, so that we allow it to decide for the Church all questions of doctrine and practice in which it speaks, leaving no room for supposed "open questions"?

Finland, France and Belgium The convention expressed its thanks to God for the fact that the Confessional Lutheran Church of Finland, which terminated its fellowship with The Lutheran Church—Missouri Synod, has been kept true by the Lord to doctrine and practice in accord with the Scriptures. The

Evangelical Lutheran Free Church of France and Belgium, whose officials were reported in 1970 to have initiated steps to lead their synod into a state of protesting fellowship relative to The Lutheran Church—Missouri Synod, was encouraged to take decisive action with regard to that fellowship.



WELS President O. J. Naumann and ELS President G. Orvick

Below: Visitors—Pastor Matti Roininen of Finland and Student Peter Gould of Australia



Lutheran Church of Australia

The Lutheran Church of Australia came into being some years ago as the result of a merger of the two Lutheran synods there, with one of which we had been in fellowship for many years. Since internal discussions are to be completed before that synod intends to initiate doctrinal discussions with other Lutheran bodies, our convention asked for the guidance of God's Holy Spirit upon its internal discussions. Our Commission on Doctrinal Matters was urged to show loving concern for the development of a strong confessional Lutheran Church in Australia.

"This We Believe" Reference was made to the fact that the pamphlet "This We Believe," containing the Scripture-based confession of faith of our Synod, has enjoyed widespread use in many languages. Members of the Synod are encouraged to make use of this pamphlet in order to become thoroughly acquainted with the Scriptural position of our Synod and to use it for explaining our heritage to others.

ON MISSIONS

The compassionate Savior once said to His disciples, "The harvest truly is plenteous, but the laborers are few; pray ye therefore the Lord of the harvest, that He will send forth laborers into His harvest." When a church body believes the Word of the Lord that church body will practice evangelism in those neighborhoods where it already has organized congregations and carry the Gospel to the uttermost parts of the world. And that church body will also have urgent business on its convention floor. The Wisconsin Synod is that kind of church body today.

GROWTH, MARVELOUS GROWTH

As the detailed reports of the World and Home Mission Boards came to the floor of the convention, and as the Mission Division's efficient resource people began to unfold the Synod's mission situation, it became abundantly clear that there was great cause for thanking to the all-merciful Lord Christ. Great things were happening on our mission fronts all over the world. Growth was reported by the GBHM (General Board for Home Missions) in every area; of particular note was the extraordinary growth in Texas. Within a decade this area had become—and was granted the status of—a "Mission District."

Similarly, the BWM (Board for World Missions) reported that the African mission had doubled in size; moreover, to its family of fields it was privileged to welcome Southeast Asia, India, and South America. The Lord promised His Church that His Word would never return void. It had not. The harvest was plenteous. The truth of the Lord's all-time mission report had not altered. What was true in the Lord's day, was true for the Wisconsin Synod in 1971. The task was there; there was much more to be done in every mission place.

A BROAD AMERICAN BASE — A PREREQUISITE FOR THE TASK

The Lord also said, "The laborers are few . . . pray"! To pursue the Lord's task, Executive Secretary Norman Berg reported, the Synod needs a strong, growing church in America. This is spiritually and financially beneficial. America is still the base for all of the Synod's operations. Beyond all predictions—perhaps even beyond the most optimistic dreams—the Lord in the past decade was giving the Synod this base. The convention heard that, under the Lord's blessing and guidance, 22 mission openings were recorded in 1970 alone, and 14 more were opened in 1971. That brought the Synod's base to 38 of the 50 states in America. This growth is fast proving to be a marvelous blessing. For its world evangelism work the Synod is receiving the best and the most from the Lord.

All this . . . But? With all of this growth and blessing, why was concern riding the reports of the GBHM? Why a pamphlet entitled **How**



Seated: Pastor R. Sprain of Guayama, Puerto Rico; Pastor R. Eger of El Paso, Texas; Pastor E. Wendland of Lusaka, Africa; and Pastor A. Guenther of Whiteriver, Arizona. Standing: Pastor E. Zimdars of El Paso, Texas; Pastor R. Cox, until recently of Central Africa; Pastor A. Zielke, Secretary of the Church of the Ev. Lutheran Confession in Germany; Pastor N. Meier of Tokyo, Japan; and Pastor K. Wengenroth, President of the Church of the Ev. Lutheran Confession in Germany.

Long? Why did GBHM's chairman Boldt ask the convention, "What do you want us to do?" What could be wrong where an obviously well-planned strategy was surpassing all expectations? What could stymie a GBHM with some 35 new missions—growing missions—in the major metropolitan areas of the leading nation in the world? New missions need worship centers. If little things mean a lot, then the GBHM had a \$5,000,000 headache in a backlog of badly needed worship centers all over the country. The GBHM issued a solemn word to the convention: unless this problem would be relieved, no new missions would be opened unless the funds were available to erect the needed worship centers.

NOW—Not, If and When An unusual problem needs that kind of a solution. A cool million dollars would not have solved the Synod's financial needs as it once used to. It would have to be more. Prayers to the Lord of the harvest are needed, and under His blessing wise stewardship.

The convention urges upon the Synod prayers in behalf of and thank-offerings for the Church Extension Fund, especially around the time of the Reformation Festival. God's thankful people delight to return to their Redeemer and Lord the first fruits of field and flock. This is step one. Second, these gifts, together with the offerings in the regular GBHM budget, will have to be deployed somewhat differently. The GBHM offered a plan to use its budget to buy money, not land. This would direct fresh funds into the whole program.

It was time for the Synod to speak, and it did. It passed the enabling resolution authorizing the Board of

Trustees to establish a new borrowing limit of \$7,000,000 for the Church Extension Fund.

A Backlog Of Work In The Special Ministries In the Home Mission Division there is a Special Ministries Board (SMB). This board's interest is the need of fellow Christians on the far-off battlefield, on the college campus. It also extends the "helping hand" of the Synod to anyone anywhere who has experienced hardship through disaster. It prepares material for the blind and for the mentally retarded. A mere enumeration of the SMB's responsibilities reflects the amount of work this board is expected to do. For years all of this work had been done by part-time committees, with the result that there is a large backlog of things that this board feels should be done now and on a "full-time" basis. Consider one, for example. Members of the Synod have known for years that the Bethesda Lutheran Home is filled to capacity and has an enormous waiting list. Who, however, has realistically faced this fact in the light of another fact, namely, that the Synod has some 3800 retarded children in its midst. Could another home keep pace, if it were built? What about those precious, blood-bought souls now? The resource men for the SMB reported that what it needs to meet its responsibilities is, first of all, a full-time executive secretary. Upon him would fall the task, for example, of organizing special teaching materials for retarded children and also training courses for teachers in the local congregations. A large backlog of work had gathered, and it was urgent work of the Lord. It was time for the Synod to speak, and it did. Resolved: a full-time secretary for the Special Ministries Board.

SEVEN CONTINENTS — THE SYNOD'S FIELD

Quoting John 6:45 the Board for World Missions, by way of Executive Secretary E. Hoenecke's report, drew the convention's attention to the Synod's wider field. "And they shall be all taught of God." What an apt selection! How well it outlines the thrust of the BWM's world plan. How well it presents why additional laborers were requested and given. Regarding the people of this world the Lord's commission states: Teach them! Social and cultural progress for foreign nations is important; but it is not primary. The rationale of the BWM is that an individual, a nation, is not really benefited until he is taught the salvation which is by faith in Christ Jesus. The world from one end to another needs such teaching. Where such teaching has been supplied, there have been marvelous blessings. The BWM reports flourishing missions in every field of its activity. In Southeast Asia (Indonesia, India, Hong Kong, and Taiwan), in Africa (Malawi and Zambia), in Apacheland, in Japan, and in Latin America lost souls have been nourished with the Bread of Life.

Pure Doctrine — A Continuing Need The Lord who has given us growth in the fields all over the world is also concerned that we give attention to sound doctrine. The BWM noted that, first, care must be given to the implantation of the Word; and secondly, care must be given to keep a mission field true to that Word. This means that an ongoing program

must be maintained to train the missionary in the language and the customs of the people in different lands. Only thus can the Gospel be faithfully conveyed to a new continent. Anything less will leave room for error and misunderstanding about what the Bible teaches. No other church body today is taking greater care to train its missionaries in doctrine and in language proficiency.

For Tomorrow Too! Increased growth increases the need to look ahead and to establish special safeguards to keep our missions doctrinally sound. Years ago the BWM decided that what was vital to the growth of foreign missions was a seminary in each field to train a national ministry. But care must also be taken to keep these seminaries and their programs truly Biblical. In keeping with this fact, the BWM decided to call together representatives of all of our seminaries in the world, even proposed seminaries, and invite these men to a conference in Hong Kong. The aim, as Professor Lawrenz pointed out in the opening paper of that conference, was to return and strengthen



WELS to enter South America

a continuing conformity to the Holy Scriptures in every mission seminary. The paper outlined the goal of all of the Synod's seminaries: first, to impart a true understanding of the authority of the Holy Scriptures; secondly, to impart a true understanding of the mission of the Church and thus of its ministry. At this conference it was declared that today the Wisconsin Synod's role is that of a mother church, but that this role is temporary. The ultimate goal is to establish a doctrinally sound seminary in every continent of the world — a network of seminaries to be operated in close collaboration in order to maintain doctrinal unity. Also envisioned, and approved, was a visiting program whereby members of the faculty at Mequon would teach at the mission seminaries on foreign fields. What a goal for tomorrow, under God's grace — a necklace of strong, faithful churches on every continent of the world!

A Historic Moment — South America A special report came to this Synod from the BWM on its recent exploration of South America. This report advocated a great step forward toward

achieving the BWM's long-range plan, in obedience to the Lord, of sending missionaries to all the world. It could not have come to this Synod at a more dramatic moment. The convention hall in Northwestern College's new gymnasium was filled to overflowing with delegates and with guests on Laity Day. Before this large gathering of Christians concerned about the Lord's work in their time, came the floor committee's resolution: Under God's blessing let us go forth! Everyone knew that to pass the motion meant that the Synod was authorizing something beyond its proposed budget. Everyone knew that to pass this motion the congregations back home would have to unite in prayer to the Lord of the harvest for laborers and for offerings to support this endeavor. Yet,

with a resounding, unanimous vote the Synod declared its readiness to enter South America, the last continent where its missionaries were not yet proclaiming the tidings of God's peace through Christ. The Lord gave the Synod His Word so that by the power of that Word faith would be built in its saving truths. At the convention, the time had come for the Wisconsin Synod to speak. It did. It answered very much as did those first disciples 20 centuries ago, "Lord, at Thy Word I will let down the net."

And that's how it was at Watertown at the 41st Biennial Convention, August 4-10, 1971, when the Synod spoke in faith of **missions**.

PROFESSOR LEROY G. RISTOW OF THE WINNEBAGO LUTHERAN ACADEMY,
FOND DU LAC, WISCONSIN, REPORTS ON THE SYNOD'S WORK
IN THE FIELD OF EDUCATION:

We Believe — Therefore We Speak to Future Generations

We believe, and our children must also have the privilege of hearing the Gospel—in home, church and school. The Synod in convention at Watertown faced that issue and passed some far-reaching resolutions.

PARISH EDUCATION

The report on the work of the Board for Parish Education made it evident that, unlike many other church bodies, our Synod has been blessed with a growing interest in Christian education. This year 244 congregations had Christian day schools. In spite of a 17 per cent drop in the birth rate over a 10-year period, our day-school enrollment increased by 8 per cent. Though only 26 per cent of our congregations have their own parish schools, 56 per cent of our Synod's communicant members belong to congregations which have such schools. Eight congregations will be opening new schools this fall. The number of teachers in our Christian day schools is 1,038—397 men and 641 women.

There are now nine Lutheran high schools, with a total enrollment of 2980 students. These Lutheran high schools have shown an increase in enrollment of 1,123 students during the years from 1960-1970. Percentagewise this is an increase of 59 per cent over the last decade.

A timely tract on government school-aid questions, called "Twenty Questions and Answers," is available from the Board for Parish Education. In preparation are a Bible History text (intermediate level) and a revised "You and Your Synod." A packet of materials of help to congregations as they prepare to open new schools is also available.

Over 30,000 children are enrolled in the vacation Bible schools in our Synod's congregations. A new VBS course will be available for summer 1972.

Delegates at the convention resolved to provide the Board for Parish Education with assistance needed for

the production of education materials by authorizing additional staff. This is to be a pastor or teacher on a leave-of-absence basis.

WORKER-TRAINING

Workers, that is, pastors and teachers, are ever needed in our parishes, as God has chosen to work through people. Worker-training is therefore very important. As a Synod, we have for over 100 years believed in a well-educated ministry for our congregations.

The 1969 convention of the Synod asked for a workable system for staffing our Synodical institutions. Consequently, the 1971 convention authorized the Commission on Higher Education to determine such staffing. This commission's recommendations will be subject to funding by the Synod's Coordinating Council and the Board of Trustees. At each convention the commission will give a report on newly established professorships and request ratification.

Role of the Academies The overall role of the Synodical academies—Saginaw, Michigan; Watertown, Wisconsin; New Ulm, Minnesota; and Mo-bridge, South Dakota—is to provide the training necessary so that students may enter as freshmen at Northwestern College or Dr. Martin Luther College. The convention gave a vote of confidence to its training program for ministers and teachers, which usually begins in the ninth grade and carries on through four years of high school, four years of college, and—in the case of pastors—four years of seminary, all under direct Synod supervision. The vote supporting the role of the academies was a vote of confidence for this type of an education for future pastors and teachers. By contrast, most Protestant seminaries recruit their students from liberal arts colleges. In recent years other Lutheran church bodies have also moved in that direction. Although the convention approved the role of the academies in providing future candidates for church and school,

still the convention also went on record welcoming students to our worker-training colleges from area Lutheran high schools and public high schools.

The Commission on Higher Education was ordered to conduct an ongoing study of the future need for pastors and teachers and to use this study as a basis for recommending to the Synod a course of action regarding the location of future Synodical academies. It was indicated that a West Coast academy would be very desirable, because of the population growth in that part of the country and the increasing size and number of our congregations there.

NWPS The convention decided that Northwestern Preparatory School remain on the same campus with Northwestern College at Watertown, Wisconsin. A further resolution authorized the study of a possible teacher-training program for Northwestern Preparatory School similar to that at the other Synodical academies.

MLA Martin Luther Academy, New Ulm, Minnesota, has 80 new applicants for the coming school year. Its faculty is now complete. The convention voted that the academy continue to share campus and facilities with Dr. Martin Luther College.

MLS Enrollment pressures at Michigan Lutheran Seminary, Saginaw, Michigan, urgently call for more dormitory accommodations. Permission to build these was granted when funds become available. An all-time high enrollment of 356 was reported. The policy of giving priority in enrollment to students preparing themselves for full-time service in the Church will be continued for the present. A master plan is also to be drawn up by the school's Board of Control to guide the academy in the acquisition of additional property and in making most efficient use of its present holdings.

NWLA Increasing enrollment at Northwestern Lutheran Academy, Mobridge, South Dakota, is causing crowded conditions. The convention concurred that the Board of this school seek off-campus housing for students when necessary. Since the old "White Building" has been condemned, the Commission on Higher Education was asked to provide for the needs of the Music Department, presently housed in that building. It was also empowered to study the purpose and special objectives of this academy and report back to the Synod in 1973. Enrollment at the school was 119, also an all-time high.

DMLC It was reported to the delegates that the new library facilities at Dr. Martin Luther College, New Ulm, Minnesota, are expected to be complete by this fall. The building, with an area of 29,999 square feet, cost \$600,000. Its air-conditioning system was a gift.

A freshman class of 185 is enrolled at Dr. Martin Luther College for next fall. The convention set a general limit on enrollment on the Dr. Martin Luther campus suggesting that the combined enrollment of the college and the academy not go much beyond 1225.

Studies on the accreditation of Dr. Martin Luther College are now in progress and the Board of Control and the faculty were urged to prepare the necessary

documents in order that steps toward this goal might be taken in May of next year.

NWC Since the Industrial Commission has assured the Board of Control of Northwestern College, Watertown, Wisconsin, that the basement of the old gymnasium can be remodeled without any changes on the main floor, the Board was authorized to proceed with this project. The 1875 dormitory, which has deteriorated beyond repair, will also be razed. Sessions of the convention were held in the school's new gymnasium.

WLS Joy was expressed over the addition of the 12th, 13th, and 14th professorships at Wisconsin Lutheran Seminary at Mequon, Wisconsin. This will lighten the workload at this institution. It was also deemed valuable to have the Seminary offer a course in graduate study in the form of a summer quarter. The convention also granted the request of the Board for World



Worker-Training Display

Missions that a seminary professor be made available occasionally as guest instructor in our foreign seminaries. We now have seminaries in Hong Kong, Zambia, Japan, and Mexico.

Bethany Program The Bethany program, offered at Bethany Lutheran College, Mankato, Minnesota, will be continued. It makes it possible for men whose age, or previous education, makes it difficult for them to go through the whole college program at Watertown, to enter the Seminary at Mequon.

RECOGNITION

Long years of faithful teaching service in our Synod's worker-training schools were recognized with thanks. The names of Victor Voecks, Theodore Pelzl, and Herbert Sitz at New Ulm, and Karl Sievert at Mobridge, South Dakota, were mentioned. Also mentioned was the 40th anniversary of Mr. Adolph Fehlauer, Executive Secretary of the Board for Parish Education.

May our Lord abundantly bless our Synod's program of parish education and its worker-training schools!

Special Ministries and Services

Somewhere the statement has been made that the more our sense perceptions are multiplied, the greater the memory retention will be. Hearing combined with sight is better than hearing alone, and the two associated with demonstration or doing are still more effective. At our recent Wisconsin Evangelical Lutheran Synod Convention at Watertown this was again evident in the visual displays arranged on the upper level of the new gymnasium floor to the rear of the assembly room for the delegates. In this area a veritable labyrinth of audio-visual attractions was conveniently set up.

The work of going out into all the world, bringing souls into the fold, and then keeping them there was stressed in manifold ways by means of these displays. So, for example, we were reminded of this by the description of the efforts of the **Public Relations Committee**. A resolution to encourage this committee to remain alert to the problems of young and old in regard to many contemporary "isms" and movements was adopted by the convention. Again, some years ago at the instigation of certain individuals who sensed the need for it, a soul conservation program was established. As a part of the Church's evangelism effort it certainly deserves the wholehearted support and cooperation of our congregations and their leaders. Pastors, church secretaries, relatives, friends, and the families themselves are asked to send names and addresses of those members who have moved, to the Synod's **Soul Conservation Office**, if the location of the nearest WELS church is not known or if it appears that there is no WELS church in the community. A concentration of names and addresses in an area could eventually lead to the organization of a congregation.

SPECIAL MINISTRIES BOARD

The Special Ministries Board supervises the Synod's ministry to its men and women in the Armed Forces, to the mentally retarded and the blind, and to men and women on college and university campuses. Since the work of this board has greatly expanded both in its scope and in the nature of the work entrusted to it, the convention authorized the calling of a full-time executive secretary of special ministries.

The Special Ministries Board has a wonderful ally in the **Lutheran Women's Missionary Society**. Supported by many contributions from individuals and other groups within the Synod, the LWMS is supplying the blind with Scripture materials printed in braille. These are offered to the blind free of charge. More than 25 different items available were listed in a flyer distributed on the convention floor. It bore the subtitle "That the Blind May See."

The number 3,800 is a conservative estimate of the number of cases of mentally retarded people, young and

old, that our Synod should be responsible for at present. The **Special Education Committee** was alerted to seek ways to meet the problem of their spiritual growth and care. Meanwhile 93 are still residing at Bethesda Lutheran Home located in the convention city of Watertown.

Another area given earnest attention during the convention was the task of serving Wisconsin Synod students attending state and private colleges and universities. Aiding them to become actively involved in church-related work are dedicated **campus pastors** and an organization called **Lutheran Collegians**. District Mission Boards have persuaded some 150 campus pastors to serve these young men and women, and the number of Lutheran Collegians chapters has risen to 29. It should be the desire of all parents and pastors to report the names of students to our campus pastors.

The responsibility of our church to the young is also being faced by our **Military Services Committee**. The civilian chaplain idea which has been the Wisconsin Synod approach to the problem of spiritual care for our men in the Armed Forces has proved highly successful. Its effectiveness is curtailed only when we fail to send in the names of men in the service. The calling of a pastor to serve camps in the States for the coming year and to study and evaluate our endeavors in this area promises to be another step forward in the development of this project.

OTHER SERVICES

The display area also introduced the visitor to the activities of the **Lutheran Pioneers** and the **Lutheran Girl Pioneers**. This Christ-centered program is intended to provide WELS youth with Christian direction in good citizenship, knowledge and appreciation of God's great outdoors, and sensible participation in many useful skills of interest to boys and girls. Companionship within the church from early age on is stressed. Terms associated with the life of the pioneers and dress in keeping with outdoor activity are the symbols of the organization.

Depicted to advantage were the **educational programs** of our Synod's congregations. Part-time agencies, Sunday schools, Christian elementary schools, and area high schools had eye-catching charts posted here and there around the display area. The "absolute truths of God's Word with standards and goals that are expected to last and provide blessings for time and eternity" served as motto of these displays.

Part of the display area was given over to the ministry of the printed Word. On display were copies of many books and pamphlets put out by **Northwestern Publishing House** in recent years. Sample issues of *The Northwestern Lutheran*, the *Junior Northwestern*, the

Wisconsin Lutheran Quarterly, the *Lutheran Educator*, and the devotional booklet called *Meditations* were also available. Another facet of the display was the sample supply of Sunday bulletins, Sunday-school materials, and Bible-class publications, whose purpose is to help maintain and increase the faith which is in Christ our Lord.

Along with the discussions on the floor concerning our Synodical academies, colleges, and the Seminary, our delegates were informed that **scholarships** in the amount of \$7860 were made available to students in May of this year. The funds came from individuals, groups, and congregations. Such scholarships assist needy students in their preparation to serve the Lord in His kingdom. An inspiring resolution proposed by one of the floor committees—the establishment of an endowment fund for this purpose—was adopted.

Direct aid was also given to more than a hundred students who had valid reason to make application for it. The money was applied to the cost of living expense for married students at our Seminary, to tuition fees for some, to board and room for others, and even for travel expense in the case of some who were far removed from their homes.

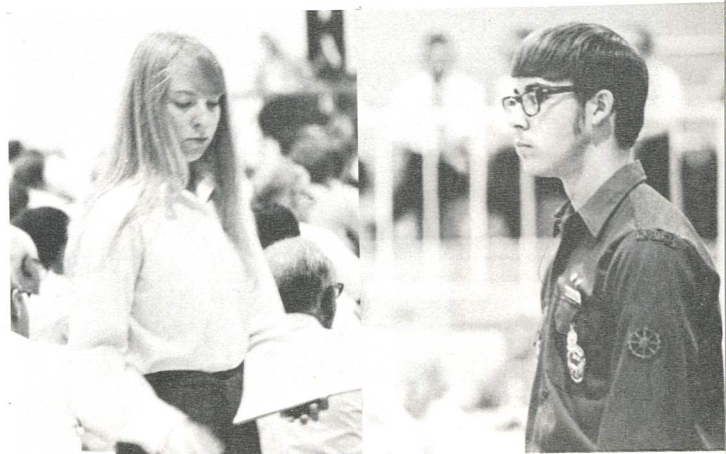
The unfortunate and deprived among men were also the object of charitable action, in keeping with our Savior's command. To be hospitable, kind, and helpful wherever it is needed is one of the graces of Christian living. A most important recommendation by our **Committee on Relief** was the encouragement not to become weary in well-doing but to make even greater efforts in the future to swell the funds on hand for cases of emergency. Such encouragement is always necessary since Christians also tend to become complacent and to take things for granted.

One charitable institution, the **Home for the Aged** at Belle Plaine, Minnesota, is in the process of being transferred to an association of Wisconsin Synod Lutheran churches. Also supported is the **East Fork Lutheran Nursery**, closely related to the mission among the Apaches in Arizona and now more than 50 years old. The average residence-time of the children taken in has been reduced in recent years. This indicates that our mission efforts have had the effect of tying families more closely together with the resulting change that the lot of children in the homes has been improved both emotionally and physically. A continued supply of dedicated and well-qualified workers, the **Lutheran Service Corps**, and a generous income from individual gifts and memorials, has made it possible to operate the nursery efficiently.

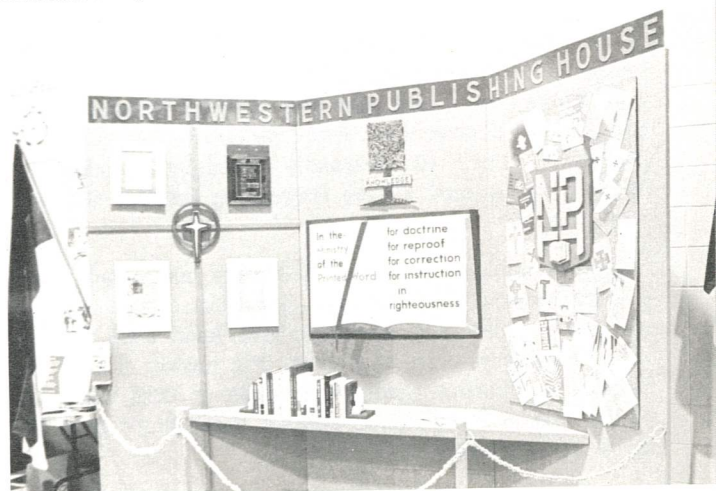
The readiness to carry one another's burden is also exemplified in the **Wisconsin Lutheran Child and Family Service**. Men and women over 65 who are members of a church in fellowship with the Wisconsin Synod, the sick, homeless and neglected children, and troubled families for whom help is requested are given aid within the limits of the personnel to provide and within the capacity of the home to furnish. For children this includes anyone regardless of race, nationality, sex, or religious affiliation, as we are reminded by the Apostle:



Display: Lutheran Pioneers and Parish Education



Convention Pages



Northwestern Publishing House Display

"As we therefore have opportunity, let us do good to all men."

The Synod's **Pension Plan**, now in its fifth year of operation, offers an opportunity to do good to them who are of the "household of faith." With the consent of specialists on the subject, an increase in benefits was advocated with only a nominal rise in the cost to the

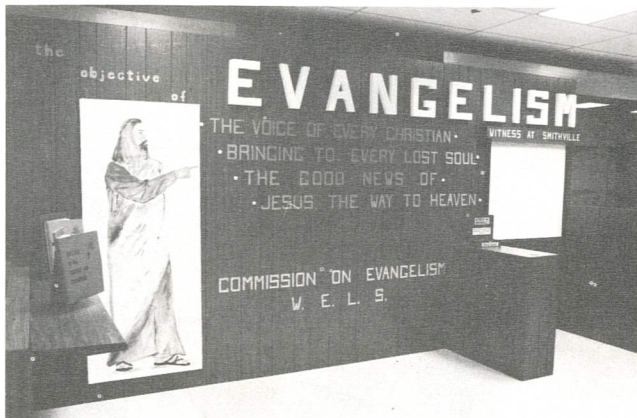
Synod. Consideration was also given to the question of a lower retirement age for pastors and teachers—65 instead of 70. This was, however, referred back for further study. Examination of the records indicated that our **Group Hospitalization** program for pastors and teachers is operating satisfactorily.

All of these special areas of Synodical work, as well as others, received consideration in the daily program

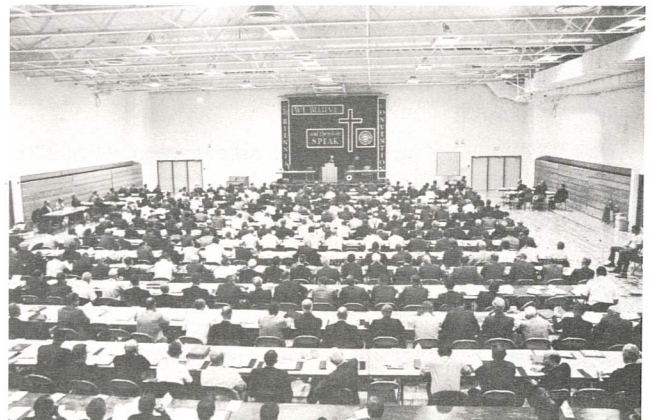
of the delegates. What had been accomplished during the biennium was reported and emphasized. However, lest we might permit ourselves the luxury of being unduly influenced by the glow of success, the sermon in the closing service once more took all conceit out of our hearts when we were reminded of the Church's experience at the first Pentecost: "And the Lord added to the Church daily such as should be saved" (Acts 2:47).

PROFESSOR HAROLD E. WARNKE, PRINCIPAL OF FOX VALLEY LUTHERAN HIGH SCHOOL, APPLETON, WISCONSIN, GIVES US:

CONVENTION SIDELIGHTS



Daily Reminder on Entering Convention Hall



Convention Delegates Doing the Lord's Business

Accompanying this article is a picture of the delegates of the Wisconsin Evangelical Lutheran Synod in convention at Northwestern College, Watertown, Wisconsin. It pictures 244 voting and 109 advisory delegates who met there for seven days from Wednesday, August 4, to Tuesday, August 10. Originally scheduled to close on Wednesday, August 11, the convention finished its work a day early.

Those who are interested in history may wonder why the convention was the 41st, since our Synod was organized in 1850, and meetings have been held at least every two years since that time. The answer is that the present numbering system was begun in 1892, when our Synod was reorganized to include much more than the State of Wisconsin.

CONVENTION THEME

Of much greater importance was the convention theme or motto: "We Believe . . . and therefore Speak," II Corinthians 4:10. A more appropriate motto is difficult to imagine, for it accurately and excellently describes the basis for our faith and life.

"We believe" everything that is written in Scripture, exactly as it is written. We do not ask which parts of

the Bible are true and which are myth—all of it is everlastingly true. We do not wonder how we are saved—we are saved by faith in Jesus Christ whom God in His grace sent into this world to redeem us sinners. These thoughts are summarized beautifully and appropriately by the Synod's seal which reads (in Latin): "By Grace Alone, By Faith Alone, By Scripture Alone."

"And therefore we Speak"—as Scripture states: "Out of the heart the mouth speaketh" (Matt. 12:34). Our faith moves us to speak. A light bulb glows when the electricity is turned on; when God fills our heart with faith in our Lord Jesus, we cannot help but testify of Him at home and abroad.

Each of these two convention themes were emphasized again and again throughout the seven days at Watertown. One major essay treated the first part while the other dealt primarily with the second. The longer devotion at the beginning of the morning sessions and the shorter ones at the beginning of the afternoon and evening sessions were likewise based on some phase of the same Bible passage, II Corinthians 4:10. And, finally, all of the convention resolutions also dealt with some part of this motto. Indeed, these words, "We Believe . . . and therefore Speak," express the work of the Church in a nutshell.

DISPLAYS

Many of our readers would have appreciated seeing the meaningful displays that filled the stage or B Gym portion of the gymnasium. Most of the displays also carried out the theme of the convention. On them one saw lettering like this: We Believe — Therefore We Maintain Special Ministries Which Speak the Word to the Blind; or, We Believe and Therefore Speak to Children in Christian Day Schools and Other Parish Agencies; or, We Believe and Therefore We Speak in Africa, in Japan, in Southeast Asia, in Latin America.

LAITY DAY

Highly fitting too was the visit of an estimated 1700 laymen and women from at least four different states on Saturday, August 7. They and we believe the Word and consequently we have contributed many millions of dollars during the past several years to erect new build-



Delegates and Visitors on Laity Day

ings at our schools for training pastors and teachers. The visitors had a good opportunity to view the many outstanding buildings on the Northwestern College campus. They attended the forenoon sessions, and in a special afternoon program they heard reports from various missionaries and officers of the Synod.

NWC GYMNASIUM

All of the convention sessions were held in the new Northwestern College gymnasium, the first official function to be held in this spacious, \$710,000 facility. If it were possible to reproduce a colored picture of this gymnasium in this issue of *The Northwestern Lutheran*, our readers would see a well-lighted, highly functional building, painted in pleasing off-white and sand-buff colors. The upper floor, a large 90' by 160' area with its Gym A and Gym B plus bleacher seating for about 1400, will accommodate almost every foreseeable gathering; the lower floor with its many smaller rooms for the storing of uniforms and equipment, its wrestling area and lockers, also seems to be eminently usable. For this and all of the other new buildings at our various institutions, may we remember to say with the Psalmist, "The Lord hath done great things for us, whereof we are glad" (Ps. 126:3).

A THANK YOU

Delegates to the convention were uniformly pleased with the way in which the Northwestern College staff took care of their physical needs. Dormitory accommoda-

tions, well-prepared meals, neatly and correctly typed and duplicated reports, and many other courtesies extended to the delegates and guests will long be remembered.

DEVOTION AND PRAYERS

Those of us who heard the inspiring devotions might well wish that they would be duplicated and sent to every household within the Synod. Surely, the Lord will bless the heart-warming words to strengthen our faith and to move us increasingly to bear witness to our Savior in all lands. May all Synodical members be reminded to pray for fidelity to the Word and for increased mission zeal, especially remembering the workers who will be called to South America, the only continent in which we were previously not preaching the Gospel!

Surely, too, the Lord will hear the prayers of the convention asking Him to keep us faithful to the convention motto. Members of the Synod might well join the delegates in one of the representative informal prayers at the close of an evening session, as follows — our readers should know that the weather was delightfully cool during the first four days of the convention, except that the Florida and Texas delegates thought the nights were cold, thereafter, however, the weather became much warmer, which explains the reference in the first sentence:

Dear Lord, Thou hast blessed us with warm weather today. Bless us also with warm hearts, continually burning with love for Thee and for Thy Word. Thou hast provided us with some fine new buildings at our institutions and in our congregations. Provide us also with truly renewed people who may be built on the foundation of the Apostles and Prophets. We thank Thee for the privilege of serving Thee. Make us more aware of the areas of service. Thou art the God who changest not. Enable us to use well Thy Word to change the hearts of the proud from darkness into light. Be with us this night. Grant us rest from the labor of the day and finally take us into our eternal rest in heaven, through the merits of our Redeemer and Savior. Amen.

THE CONVENTION MOOD

A word must also be said about the wonderful spirit that showed itself in every part of the convention's activities. One could almost feel the delegates' dedication to the work that lay before them, as one noted how carefully they listened to the many presentations and how wholeheartedly they cooperated.

One could speculate on the reasons for the outstanding spirit with which the convention did its work. Was it the excellently organized program and the attention to the physical needs of the group? Was it the rousing hymns and the edifying devotions? Was it the cooperation of the delegates who came early and remained in their seats until the final Amen on Tuesday evening? All that — but above all else God's goodness who has showered the Wisconsin Evangelical Lutheran Synod with manifold blessings, who has given our Synod agreement in doctrine and practice such as few church bodies enjoy today. May we respond by loving Him in return and spreading His Word to many who do not yet know Him and His Son, Jesus!

† **Pastor W. E. Steih** †
1905 - 1971

Pastor William Ernst Steih died quite suddenly on August 2, 1971, after a series of massive heart attacks. He was active until two days prior to his death, serving his own congregation at Cutler Ridge, Florida, as well as a vacancy at Pompano Beach. He attained the age of 66 years, having been born in Deerfield, Michigan, on July 12, 1905.

Pastor Steih was a graduate of Michigan Lutheran Seminary and of Concordia Lutheran Seminary, Springfield, Illinois. Upon his graduation in 1930 he was assigned to our Wisconsin Synod missions at Tempe, Chandler, and Mesa, Arizona. Later he served two parishes in Michigan, Zion Lutheran at Lansing and Bartholomew at Kawkawlin.

In September of 1954 he became the first missionary of our Synod in Florida. He organized Faith Ev. Lutheran Church in St. Petersburg in



Pastor W. Steih

1955. He was also instrumental in organizing congregations at Seminole, Tampa, and elsewhere in Florida. In January 1968 he accepted the call to

a new mission at Cutler Ridge, a suburb of Miami. For a number of years he served as Visiting Elder of the Florida Conference.

The chapel he had planned, and for which ground was to have been broken, he will not see. He is instead enjoying the eternal mansions.

Services were held at Cutler Ridge on August 4, the Rev. J. Vogt officiating. Burial services were held at St. Petersburg, following a service at Faith Church which he had served for 13 years. The undersigned based his words of comfort on Isaiah 61:10.

Surviving are his wife, Arlene, nee Delker, whom he married on July 12, 1930; three daughters: Mrs. Suzanne Landosky, Mrs. Judith Wolf, and Mrs. Lois Lopez; three sons: Herbert, Robert, and Willet; 19 grandchildren; one sister and two brothers. "Enter into the joy of thy Lord!"

RAYMOND L. WIECHMANN

CHANGE OF ADDRESS

Pastors

Bergholz, Hoge W.
225 E. Harris St.
Appleton, Wis. 54911

Bernhardt, William F.
895 Cottage NE
Salem, Ore. 97302

Brug, John F.
213 Broadway
West Newton, Pa. 15089
(412) 772-9710

Carlson, Errol W.
9904 S. Park Ave.
Tacoma, Wash. 98444

Habeck, Daniel E.
820 Viola Ave.
Oshkosh, Wis. 54901

Jungkuntz, Frederick H.
2821 W. Harrison
Milwaukee, Wis. 53215

Kobleske, Roger W.
2416 Algoma St.
Stevens Point, Wis. 54481

Ponath, David M.
2485 East 17 Ave.
North St. Paul, Minn. 55109
(612) 777-1910

Waldschmidt, Robert O.
658 12th St. N.E.
Mason City, Iowa 50401

Ziesemer, Richard D.
1608 Clover Lane
Mequon, Wis. 53092

Teachers

Corona, Frank
3708 S. 24th St.
Milwaukee, Wis. 53221

Dallmann, James
621 E. Richbrook Dr.
Claremont, Calif. 91711

Fuhrmann, Wm. L.
306 N. National
Fond du Lac, Wis. 54935

Gartner, Daniel
4450 N. 41st St.
Milwaukee, Wis. 53209

Gosdeck, Donald E.
4610 Elger Lane
Madison, Wis. 53704

Hagen, Harlan
1605 11th St.
Rapid City, S. Dak. 57701

Ingebritson, Mervin
216 Summit Ave.
New Ulm, Minn. 56073

Jeseritz, Rudolph
38 Observatory Ct.
Pullman, Wash. 99163

Kempfert, Orville W.
Box 163, MR 1
Sandy Beach Rd.
Lake Mills, Wis. 53551

Kuether, William
824 W. Cecil St.
Neenah, Wis. 54956

Maertz, Howard
625 Kathryn Ave.
Marshall, Minn. 56258

Pape, Ronald A.
1412 Farres Ave.
St. Joseph, Mich. 49085

Pape, Waldemar A.
213 Coffmann
Fond du Lac, Wis. 54935

Pelischek, Harlan A.
R. 2, Box 47-A-1
Fort Atkinson, Wis. 53538

Saatkamp, Gary
5054 N. 61st St.
Milwaukee, Wis. 53218

Sauer, David A.
6200 Wilkins Hy.
Citrus Heights, Calif. 95610

Schafer, Edmund
3901 Green St., Apt. 4
Racine, Wis. 53402

Schroeder, Morton A.
223 S. Highland
New Ulm, Minn. 56073

Stebnitz, Douglas
5831 N. 69th St.
Milwaukee, Wis. 53218

Welke, Norman
531 Milford
Watertown, Wis. 53094

Wendler, David
602 N. State
Appleton, Wis. 54911

Wrobel, James L.
Rt. 1
Chaseburg, Wis. 54621

Zubke, David
149½ W. North St.
Jefferson, Wis. 53549

ORDINATIONS AND INSTALLATIONS

Ordained and Installed

Pastors

Edenhauser, Kenneth R., as pastor of St. Peter Ev. Lutheran Church, Route 4, Chilton (Collins), Wis., on Aug. 1, 1971, by A. F. Schultz, authorized by K. A. Gurgel, (N. Wis.).

Gorske, Ronald C., as pastor of Trinity Ev. Lutheran Church, Johnson, Minn., on Aug. 1, 1971, by A. T. Kretzmann, authorized by M. J. Lenz (Minn.).

Kobleske, Roger W., as pastor of New Mission, Stevens Point, Wis., on Aug. 1, 1971, by Wm. Lange, authorized by C. H. Mischke (W. Wis.).

Schwartz, Martin L., as pastor of St. Paul Ev. Lutheran Church, Montrose, Minn., and of Trinity Ev. Lutheran Church, Buffalo, Minn., on Aug. 1, 1971, by H. M. Schwartz, authorized by M. Lenz (Minn.).

Trapp, John A., as pastor of Calvary Ev. Lutheran Church, Sheboygan, Wis., on Aug. 8, 1971, by Prof. C. Trapp, authorized by K. Gurgel (N. Wis.).

Waack, Ralph C., as pastor of Redeemer Ev. Lutheran Church, Huntsville, Ala., on July 18, 1971, by R. C. Wiechmann, authorized by W. J. Zarling (Mich.).

Installed

Cox, Raymond G., as pastor of Good Shepherd's Ev. Lutheran Church, West Allis, Wis., on Aug. 15, 1971, by R. Schulz, authorized by A. Buenger (S.E. Wis.).

Ponath, David M., as pastor of Christ Ev. Lutheran Church, North St. Paul, Minn., on Aug. 1, 1971, by P. R. Kurth, authorized by M. J. Lenz (Minn.).

Russow, Howard E., as pastor of St. John's Ev. Lutheran Church, Sleepy Eye, Minn., on Aug. 1, 1971, by F. H. Nitz, authorized by M. J. Lenz (Minn.).

Schmidt, Wayne E., as pastor of the Wisconsin Lutheran Chapel and Student Center, Madison, Wis., on Aug. 15, 1971, by A. Laper, authorized by C. H. Mischke (W. Wis.).

Schroeder, John P., as pastor of Mount Calvary Ev. Lutheran Church, Kimberly, Wis., on Aug. 8, 1971, by M. A. Schroeder, authorized by K. Gurgel (N. Wis.).

Teachers

Halldin, David, as Minister of Christian Education at Good Hope Ev. Lutheran Church, Omaha, Nebr., on Aug. 15, 1971, installed and authorized by G. E. Free (Nebr.).

Korth, Jeffrey, as teacher at Emanuel Ev. Lutheran Church, Route 2, Fairfax, Minn., on Aug. 15, 1971, by E. Carmichael, authorized by M. J. Lenz (Minn.).

Nack, David, as teacher at St. John Lutheran Church, Fairfax, Minn., on Aug. 15, 1971, by W. Vatthauer, authorized by M. J. Lenz (Minn.).

RESULT OF COLLOQUY

In a colloquy held on Aug. 6, 1971, Mr. Richard E. Getz, Austin, Texas, formerly affiliated with The Lutheran Church—Missouri Synod, was found to be in agreement with the doctrinal position of the Wisconsin Ev. Lutheran Synod. He is herewith declared eligible for a call in the field of secondary education in the area of Library Science and Social Studies.

First Vice-President Carl H. Mischke
District President Immanuel G. Frey
Professor Siegbert W. Becker

SOCIAL WORKER

Social Worker—MSW. Salary competitive. Work with inter-disciplinary team and parents of mentally retarded children. Contact Director of Social Service or Personnel Manager, Bethesda Lutheran Home, 700 Hoffmann Drive, Watertown, Wis. 53094—Phone (414) 261-3050.

CALENDAR OF CONFERENCES

DAKOTA-MONTANA

ALBERTA-MONTANA PASTORAL CONFERENCE

Date: Sept. 21-22, 1971.
Place: St. Peter's Ev. Lutheran Church, St. Albert, Alberta, Canada.
Preacher: H. Wood.

Agenda: Continuation of the study of the Sermon on the Mount—Matthew 6:1-15, R. Weimer; The Pope as the Antichrist, Dr. Schultze; The Light of the Gospel in the Ante-Nicene Fathers, D. Deutschlander; A Restudy of Antinomianism with Application to Modern Lutheranism, H. Wood; The Methods of Present Day Mission Work Compared with those of Former Times, Dr. P. Peters.

P. Stuebs, Secretary

EASTERN DELEGATE CONFERENCE

Date: Sept. 14, 1971; Opening Service with Communion, 9:30 a.m.
Place: Good Shepherd, Sioux Falls, S. Dak.; J. Babler, pastor.

Agenda: Reports on Synod Convention.
M. W. Schulz, Secretary

WESTERN DELEGATE CONFERENCE

Place: Zion Ev. Lutheran Church, Moberg, S. Dak.

Date: Sept. 14, 1971.
Time: 10 a.m. (CDT) with Communion service.
Preacher: F. Fedke (G. Geiger, alternate).
Agenda: Reports by the delegates to the August Synod convention.

Rev. Dennis A. Hayes, Secretary

MICHIGAN

GULF-ATLANTIC DELEGATE AND PASTORAL CONFERENCE

Date: Sept. 28-29, 1971 (lay delegates attend first day).

Time: 9 a.m.
Place: Mt. Calvary, Tampa, Fla.; E. C. Renz, host pastor.

Communion Service: Tuesday evening.
Preacher: G. Kionka (J. P. Meyer, alternate).
Agenda: Age of Confirmation, K. Peterson; Exegesis: I Tim. 4:11ff., M. Goeglein; Problems in Interpreting I Cor. 7, D. Weiser.

SOUTHEASTERN PASTOR-DELEGATE CONFERENCE

Date: Sept. 20-21, 1971.
Place: Trinity Lutheran Church, Saline, Mich.; J. Westendorf, Pastor.

Agenda: Convention Reports; Exegesis of Revelation 2:18-29, D. Falck; "How to Develop A Warm And Friendly Spirit In the Congregation," J. Huebner.

Communion Service: Sept. 20, 7:30 p.m. R. Winter, preacher (K. Strack, alternate).
E. Pinchoff, Secretary

MINNESOTA

CROW RIVER POST-SYNOD DELEGATE CONFERENCE

Date: Sept. 12, 1971.
Place: St. Paul's, Litchfield, Minn. (S. Ramsey and W. Ripley).
Time: 2:30 p.m.

Agenda: Report from the 1971 Synod Convention.
Norman C. Kuske, Secretary

CROW RIVER FALL PASTORAL CONFERENCE

Date: Sept. 21-22, 1971.
Place: St. Paul's, Montrose, Minn.
Time: 10 a.m. (Communion service at 8 p.m., Sept. 21).

Agenda: Sermon Study Ezek. 3:17-21, by Pastor M. Scheele; Isagogical Paper on Malachi, by Pastor A. Frenz; Exegetical Paper on I Tim. 4:1-6, by Pastor R. Winters; Practical Paper: "God Given Powers of the Government" (Table of Duties Sec. III), by Pastor R. Reimers.

Norman C. Kuske, Secretary

REDWOOD FALLS DELEGATE CONFERENCE

Date: Sept. 28, 1971; 2-9 p.m.
Place: St. John's Ev. Lutheran Church, Omro Township (D. G. Zimmermann, pastor).
Agenda: Highlights of the 41st Biennial Convention of the Wisconsin Ev. Lutheran Synod; Reports on Missions, Worker-Training, Doctrinal Matters; Finances, and the essay "Therefore We Speak: Evangelism in Practice."
Please send all excuses to the host pastor.
A. P. Jannusch, Secretary

NEBRASKA

CENTRAL PASTORAL CONFERENCE

Date: Sept. 21-22, 1971; 10 a.m.
Place: Newton, Iowa; L. Tessmer, pastor.
Preacher: M. Weishahn.
Agenda: Hosea 5; Exegesis of Romans 2:1-16; Formula of Concord, Art. XI; The Curse of Canaan; The Role of Organizations in the Apostolic Church.
Please announce housing intentions to host pastor.
J. Humann, Secretary

COLORADO MISSION DISTRICT PASTORAL CONFERENCE

Date: Sept. 14-15, 1971; Opening Devotions at 10 a.m.
Place: St. John's Ev. Lutheran Church, Platteville, Colo. (W. W. Westphal, Pastor).
Communion Service: Tuesday, Sept. 14, 7:30 p.m.; Preacher: L. G. Ellenberger (H. G. Meyer, alternate).
Agenda: Various Reports; Essays: Word Study of the Word "Heavens" in Scripture, D. L. Bode; The Status in the Church of those Unscripturally Divorced, W. A. Krenke; Exegesis of I Cor. 15:23-28, R. V. Ash.
G. G. Ditter, Secretary

SOUTHERN DELEGATE CONFERENCE

Date: Sept. 27, 10 a.m. to Sept. 28, 4 p.m.
Place: Mt. Olive Lutheran Church, Overland Park, Kans.; K. Plocher, pastor.
Preacher: V. Tassler (P. Knickelbein, alternate).

Agenda: Article IV—Augsburg Confession, S. Kugler; May a Christian Sue His Neighbor or Defend Himself Against a Lawsuit? D. Plocher; A Scriptural Study of the Terminology of the Athanasian Creed, A. Werre; A Christian's Involvement in Labor Unions with special emphasis on Strikes, R. Hering; Communicating the Gospel in Words and Ways Best Understood by the Layman, M. Frey.

Please announce to the host pastor in sufficient time.

K. Bode, Secretary

NORTHERN WISCONSIN

LAKE SUPERIOR SUNDAY SCHOOL TEACHERS' CONVENTION

The 42nd annual Lake Superior Sunday School Teachers' Convention will be held at Zion Lutheran Church, Peshtigo, Wis., on Sept. 19, 1971, at 2:30 p.m. The host pastor is Pastor Delton Tillis.

Mrs. Raymond Thorsen, Secretary

MANITOWOC PASTORAL CONFERENCE

Date: Sept. 20, 1971; 9 a.m. Communion service.
Place: Zion Ev. Lutheran Church, Louis Corners, Wis.
Preacher: R. Sawall (L. Schaller, alternate).
Agenda: Exegesis of Hebrews 5, A. Schmelting; Sermon Study, R. Weber; Birth Control and Abortion: Present Trends in the Light of Scripture, R. Sawall; The Status In the Church of Those Unscripturally Divorced, G. Unke.

P. J. Damrow, Secretary

MISSIONARY CONFERENCE

Date: Sept. 27, 1971, 12 noon, to Sept. 28, 1971, 12 noon.
Place: Grace Ev. Lutheran Church, Waupun, Wis.; K. Gawrisch, 528 Grandview, Waupun, Wis. 53963.

Preacher: L. Winter (F. Bergfeld, alternate).
Agenda: Adult Instruction Class—A Review of Methods and Manuals with Special Emphasis on Fellowship and Stewardship, P. Kante; The Missionary's Approach to the Individual Lost Soul on the Basis of John 4, C. Klein; The Congregation's Subsidy Request, M. Radtke; various reports.

Note: Those desiring overnight lodging should contact the host pastor as soon as possible.

J. Braun, Acting Secretary

RHINELANDER DELEGATE CONFERENCE

Date: Sept. 26, 1971; 2:30 p.m.
Place: St. John's Lutheran Church, Phelps, Wis.
Agenda: Report of Delegates attending Synod Convention in August.
M. Fluegge, Secretary

RHINELANDER PASTORAL CONFERENCE

Date: Sept. 13, 1971.
Place: St. Paul Ev. Lutheran Church, Hurley, Wis.
Time: Communion service at 9 a.m.
Speaker: H. A. Kahrs (D. Kock, alternate).
Agenda: Exposition of the Epistle of James by R. G. Koch; Exegesis of Eph. 5:8ff by E. Kock.

Walter Goers, Jr., Secretary

WINNEBAGO TEACHERS' CONVENTION

September 23-24, 1971

Martin Luther School, Neenah, Wis.

Thursday, Sept. 23

9:00 - 9:50 — Opening Devotion
9:50 - 10:30 — Announcements, Elections, Synod Delegate Report, District President's Report
10:45 - 12:00 — "Guiding Children to Apply Christian Principles to Their Social Life" — Prof. L. Huebner
1:00 - 1:30 — Displays of School Supplies
1:30 - 1:45 — Devotion
1:45 - 2:45 — "Physical Education for Girls" — Miss M. Meyer and Mrs. J. Haferman
"Physical Education for Boys" — L. Schneider and G. DeNoyer
3:00 - 3:30 — "Playground Activities" — M. Fluegge
3:30 - 4:00 — Business and Closing

Friday, Sept. 24

9:00 - 9:15 — Devotion
9:15 - 9:45 — Board of Education Reports (Synod and District)
9:45 - 10:45 — "Teaching the Doctrine of Justification at each Grade Level" — Prof. L. Schaller
11:20 - 12:00 — "Devotions in the Day School" — Mrs. R. Sontag, Miss M. Behnke, E. Schroeder, and A. Peter
1:00 - 1:30 — Displays of School Supplies
1:30 - 1:45 — Devotion
1:45 - 3:00 — "Techniques for Teaching Writing" — C. Sitz
3:00 - 3:30 — Business and Closing
T. Nommensen, Program Chairman

PACIFIC NORTHWEST

PASTORAL CONFERENCE

Date: Sept. 21-23, 1971.
Place: Grace Lutheran Church, Seattle, Wash.; L. Weindorf, pastor.
Preacher: Wm. Bernhardt (K. Neumann, alternate).

Agenda: II John 6-11, E. Zimmermann; Gal. 4:20ff., M. Teske; F. C., Art. VIII. Of the Person of Christ, P. Schliesser; "Does the Form and Language of our Corporate Worship Communicate Meaningfully to our People?" M. Diersen; "A Review of Church and Ministry," including a critique of the article "Let the Buyer Beware" and the Romoser Essey, G. Zimmermann; "Bible Numerics—What is it? What Use Can We Make of It?" P. Albrecht; "What Constitutes Desertion in Marriage?" D. Bode.
M. Diersen, Secretary

SOUTHEASTERN WISCONSIN

DODGE-WASHINGTON PASTORAL CONFERENCE

Date: Sept. 14, 1971.
Place: St. John, Woodland, Wis.
Time: 9 a.m.
Preacher: N. Retzlaff (H. Schwertfeger, alternate).
Program: Exegesis of I Cor. 15:35-58, by E. Froehlich; An Evaluation of Good News for Modern Man—Today's English Version, by N. Retzlaff; Convention Report, by W. Bartelt and P. Huth.
Paul H. Huth, Secretary

METRO SOUTH PASTORAL CONFERENCE

Date: Sept. 20, 1971.

Place: Jordan Ev. Lutheran Church, West Allis, Wis. (F. Gilbert, host pastor).

Time: 9 a.m. Communion service.

Preacher: J. Wille (M. Westerhaus, alternate).

Agenda: Exegesis on Mark 2:13ff, E. Lehninger; An Evaluation of Early Communion and Late Confirmation, M. Westerhaus; Reports and Conference business.

Vaughn H. Vogel, Secretary

JOINT PASTORAL CONFERENCE — SOUTHERN AND CHICAGO CONFERENCES

Date: Sept. 21, 1971; 9 a.m.

Place: Jerusalem Ev. Lutheran Church, Fernald and Capulina, Morton Grove, Ill.; G. Boldt, host pastor.

Preacher: F. C. Schulz (R. Schumann, alternate).

Agenda: I Peter 2, T. Spiegelberg (I Peter 3, W. Mueller, alternate); Early Communion, Late Confirmation, H. Wiedmann and A. Siggelkow, panelists.

(Alt. "Is the Singing of 'The Messiah' in Civic Chorus Sinful Unionism?", R. Pan-kow).

T. C. Spiegelberg, Secretary

WESTERN AND LAKESHORE CIRCUIT SUNDAY-SCHOOL TEACHERS' INSTITUTE

Place: Trinity Ev. Lutheran Church, Cal- donia, Wis.

Date: Sept. 26, 1971, at 1:30 p.m.

WESTERN WISCONSIN

CHIPPEWA RIVER VALLEY CONFERENCE

Date: Sept. 14, 1971.

Place: St. Paul's Ev. Lutheran Church, Ridgeland, Wis., A. E. Schulz, host pastor.

Time: 9 a.m. Communion service.

Speaker: H. Heckendorf (R. G. Hoenecke, alternate).

Proposed Agenda: Report by the Rev. Norman Berg, Executive Secretary, GBHM; Exegesis of II Timothy, by A. E. Schulz; Lutheranism and Society, by R. P. Otto; Review of Prof. J. P. Koehler's essay, "Legalism in an Evangelical Church," by E. E. Prenzlow; The Pastor's Stewardship of Time, by B. E. Stensberg; Mission Reports, by W. Lange and H. M. Schwartz; Synodical Information, by E. E. Prenzlow; Questions of Casuistry.

K. E. Schroeder, Secretary

NAMES REQUESTED

WELS STUDENT CENTER, LA CROSSE, WIS.

The Wisconsin Lutheran Chapel and Student Center, 1530 Main, La Crosse, Wis., would like the names of students attending La Crosse State University. Send % Mr. Neil Scriver, House Manager.

GREATER BOSTON AREA

Students and other personnel of the WELS are invited to make Harvard Street Lutheran Church (ELS) of Cambridge, Mass., their church home while in the Greater Boston area. Please send names and address to the undersigned.

Pastor Paul G. Madson
30 Richfield Rd.
Arlington, Mass. 02174

STUDENTS — EAU CLAIRE, WISCONSIN

Please send the names of WELS students attending the University of Wisconsin — Eau Claire to the undersigned. Sunday services at St. Mark Ev. Lutheran Church (3307 State St.) are at 10:30 a.m.

Pastor Frederick A. Kogler
215 E. Hamilton St.
Eau Claire, Wis. 54701

HEADING SOUTH? OR THROUGH TENNESSEE?

WELS services now held in the Nashville area: Philipps-Robinson Funeral Chapel, 257 Gallatin Road, Hendersonville, Tenn: Sun- days, 10 a.m. For directions, contact:

Pastor Richard Stadler
124 Elnora Drive
Hendersonville, Tenn. 37075
Phone: (615) 824-3894

EXPLORATORY

CORVALLIS, OREGON

The Pacific Northwest District Missionary is now working in Corvallis, Ore., exploring the possibility of establishing a WELS mission in that area. If you know of someone who might be interested, please contact:

Pastor Warren Widmann
2655 NW Highland, Space 55
Corvallis, Ore. 97330

TIME AND PLACE OF SERVICE

INDIANAPOLIS, INDIANA

Divine Savior Ev. Lutheran Church, located at 7315 E. 75th St., Indianapolis, Ind. 46256, is now worshipping at 9:30 a.m. Eastern Standard Time. Sunday school meets at 10:30 a.m.

T. C. Spiegelberg, pastor

PITTSBURGH, PENNSYLVANIA AREA

The WELS has two missions in the south Pittsburgh area. Divine Charity Lutheran Church meets at the South Community YMCA on Bliss Dr. off Curry Hollow Rd. near Rte. 51 in Baldwin Borough, Sunday, 9 a.m.

Faith Lutheran Church meets at the Old Fells Church at the Fellsburg Crossroads, ¼ mile west of Rte. 51, 2.6 miles south of the intersection of Rte. 51 and Rte. 136. This is about 20 miles south of Pittsburgh. Service time: 11 a.m.

For referrals or information contact Pastor John Brug, 213 Broadway, West Newton, Pa. 15089. Tel. (412) 872-9710.

CALL FOR NOMINATIONS

NORTHWESTERN COLLEGE

Additional nominations for the 30th professorship, which has been assigned to the field of high-school music, are hereby solicited from the members of the Synod.

Major areas of responsibility will be: teaching the high-school music classes, directing high-school choral organizations, and assisting in the supervision and instruction of applied keyboard music.

Nominations must be received no later than Sept. 14, 1971, by the Northwestern College Board of Control.

Pastor Walter A. Schumann, Jr., Secretary
612 S. Fifth St.
Watertown, Wis. 53094

OFFERS

FURNITURE

To any mission congregation: 10 church pews, altar, and pulpit for the cost of transportation. Please contact:

Trinity Ev. Lutheran Church
Box 98
Clear Lake, S. Dak. 56226

PARAMENTS

To any congregation willing to pay the shipping cost: 3 sets of altar paraments — black, white, purple. Contact: Emanuel Lutheran Church. P.O. Box 711, Tawas City, Mich. 48763.

REQUESTS

COMMUNION WARE

The Nashville area mission is in need of a Communion set. If one is available, please contact the undersigned to make arrangements for securing it.

Pastor Richard Stadler
124 Elnora Drive
Hendersonville, Tenn. 37075
Phone: (615) 824-3894

FALL PASTORS' INSTITUTE

The 1971 Pastors' Institute at Wisconsin Lutheran Seminary, Mequon, Wisconsin, will be held on five Monday afternoons beginning Oct. 4. Two lectures will be given on each of the five Mondays from 1:30-4:30 p.m.

"Isagogical-Exegetical Study in Hebrews"—Prof. F. Blume.

"The Pastor Administers His Office"—Rev. C. Mischke.

The registration fee is \$5. Reservations are to be sent to Prof. Carl Lawrenz, 11831 N Seminary Drive 65 W, Mequon, Wis. 53092.

E. G. Toepel, Secretary
Seminary Board of Control

NOTICE!

Pastor Karl Otto — 392-16-6370

Civilian Chaplain in Southeast Asia
Saigon, Vietnam

Servicemen may phone Saigon PTT
22429 or visit Chaplain Otto at 329
Vo Tanh, Saigon.

Mailing address:

WELS Box 56, APO SF 96243

ATTENTION — COLLEGE AND UNIVERSITY STUDENTS!

College and university students are asked to list their religious affiliation as "Wisconsin Synod" when enrolling at school. This is extremely important, especially at schools where the campus pastors of our Synod have access to the religious preference cards of students.

We also encourage all students who attend non-Synodical schools away from home to see to it that their names and addresses reach the office of the Lutheran Spiritual Welfare Commission promptly. Ordinarily this is done through the home pastor. This will enable the student to receive regularly the following: Meditations, The Northwestern Lutheran, periodic sermons and newsletters.

Address all communications to: Lutheran Spiritual Welfare Commission
3624 W. North Ave.
Milwaukee, Wis. 53208