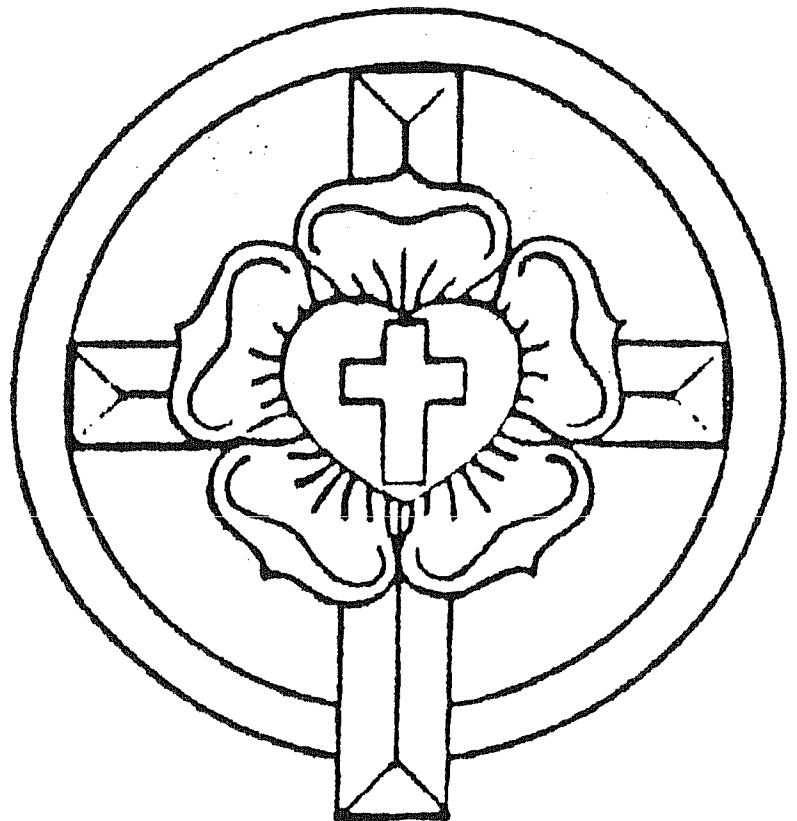


CHURCH LOGO
December 1983 - February 1986

BEAUTIFUL SAVIOR LUTHERAN CHURCH
Marietta, Georgia

February 14, 1983 - July 10, 1988
(Exploratory) TO (Church Dedication)



CHURCH LOGO
March 1986 - ??????

Submitted by:

Matthew Guse

Church History Paper

April 26, 1998

Table of Contents

PART I	Chronological History.....1 - 16
PART II	The Attitude Of The Mission....17 - 28
PART III	The Appendix.....1 - 18

PART I

CHRONOLOGICAL HISTORY

Chronological History

February 14,1983 - July 10,1988

1983

- February 14** The Wisconsin Evangelical Lutheran Synod General Board for Home Missions (WELS BHM) approves the request made by the South Atlantic District (SAD) to grant exploratory status to the North Atlanta mission field (South Central Conference). Permission is also granted to start calling for a full time pastor. *(See Appendix page 1)*
A call goes out to Pastor John Guse who has been serving in Lexington, South Carolina for 10 years. He accepts the call.
- July** Pastor Guse and his family move from Lexington, South Carolina and arrive in Atlanta. The parsonage is located at 255 Jade Cove Circle Roswell, Georgia 30075.
Current members from Sola Fide (Lawrenceville, Georgia) and Sola Scriptura (Decatur, Georgia), form the nucleus of the new mission congregation. The name "Beautiful Savior Lutheran Church" was chosen shortly thereafter.
- August 28** Pastor John Guse and Vicar Randy Hunter are installed as the congregation's called workers.
- September 11** Services begin at Holcomb Bridge Early Learning Center in Alpharetta, Georgia. There is a 9:15a.m. Bible hour followed by a 10:30a.m. worship. There were 44 present for the first service.
(See appendix pages 13 & 16)
- 18-20** The WELS GBHM meets in Milwaukee, Wisconsin. They meet to discuss the congregations request for mission status and request for land purchase. These requests are extraordinary as they have come so soon after the congregations first service. *(See appendix pages 2-3)*
The requests came back "Deferred". Both the CEF allocations and request for mission status were deferred until a later date.

- October** **5** Confirmation classes begin at the parsonage. There were 5 in attendance.
- 10-15** The members of Beautiful Savior begin to distribute church brochures and literature around their immediate neighborhood. 2,000 homes were reached.
- 30** The members of Beautiful Savior join with area WELS congregations at Sola Scriptura to celebrate the 500th birthday of Martin Luther at a special Reformation service.
- November** **6** Beautiful Savior holds its first communion service.
- 8** The voters assembly meets. There is discussion to conduct a thorough investigation for incorporation, mission status, and land.
- November-December** Midweek Advent services are held jointly with Resurrection Lutheran Church (ELS) in North East Marietta, Georgia. Services to begin at 7:30p.m.
- December** Beautiful Savior gears up for Christmas by purchasing a bulk mailing permit for \$85. A bulk mailing of 500 invitations is then sent out.
- 24** Beautiful Savior receives an early Christmas gift as the owner of the Holcomb Bridge School gives the use of the premises free of charge. The Christmas Eve service took place at 7:00p.m.

1984

- January** **1** New Year's Day service is canceled due to no heat.
 Beautiful Savior acquires a monthly listing of newcomers to the area. The list contains about 250 names to whom mailings are sent out.
- 22** Ryan Eric Carmichael is Beautiful Savior's first baptism.
- February** **19** A congregational building fund has been established into which 15% of the weekly offering is placed.

- 19-21** The WELS GBHM meets in Milwaukee with Beautiful Savior's requests for mission status and land search authority.
The results come back "Positive." Beautiful Savior is granted mission status. Beautiful Savior has also been granted permission to seek a CEF loan for 2-3 acres of land. *(See appendix pages 4-6)*
- March 18** The congregation's land search committee is presently looking at a site on Nesbit Ferry Road. The site is 2 ½ acres in size with an asking price of \$75,000. Upon further review the land search committee will then decide to make a recommendation for purchase to the congregation.
These efforts ceased as the site was contracted out to another party the following week.
- April 20-22** The Easter season schedule:
Good Friday (Holcomb Bridge at 7:30p.m.)
Easter Breakfast (Holcomb Bridge at 9:15a.m.)
Easter Festival (Holcomb Bridge at 10:30a.m.)
- May - June** Beautiful Savior kicks off its Mass Media Campaign. The theme "Come to the WELS and be filled with the living water" unites all area WELS churches. There is an emphasis on Newspaper ads, a 60 second blurb on WQXI radio, thousands of letters are prepared to be mailed, canvassers are prepared, and posters go up around the city. The City of Roswell rejected the request for billboard advertising. Television ads are too expensive, but the public service announcements are free.
- May 5** Beautiful Savior members hand out 2,500 door hangers.
- 6-13** 4 students from DMLC use their spring break to help Beautiful Savior canvass 2,100 homes.
- 19** Beautiful Savior distributes 2,600 door hangers around the area.
- 25-31** Two men from the seminary use their Easter break to help Beautiful Savior canvass 3,800 homes.
- June 10** Chrissy Wempner and Daniel Guse are Beautiful Savior's first two confirmands.
- 16** Beautiful Savior celebrates its first wedding, Melba B. Moseley to Gary R. Heinitz. The service took place at Sola Fide Lutheran Church.
- July 19** Beautiful Savior holds a "Funday School" at a nearby park. It is a time for children to participate in Bible study, crafts, and activities. Seventeen children participated in the event.

- July** 29 Beautiful Savior bids farewell to Vicar Hunter as he returns to the seminary to finish his training.
- September** 2 Beautiful Savior moves its services to the Roswell Funeral Home. Bible hour is at 9:15a.m. with worship at 10:30p.m. (*Appendix page 14*)
- 16 Beautiful Savior celebrates their first anniversary.
- 30 Land sites continue to be considered:
 1. A site on Crabapple Road
 2. A site on Webb Bridge Road
 3. Two other sites are in the running as well
 Pastor Guse begins serving the vacancy at Resurrection Lutheran Church. He serves until May 12, 1985. Pastor Richard Long is then installed.
- October** 9 An elders program is started. Members of the congregation begin to follow up on visitors who live in their prospective areas.
 A Lutheran boy and girl pioneer program is in the making subject to interest and available leadership.
- 28 A joint Reformation festival is held at Sola Scriptura at 4:00p.m. The traditional Lutheran potluck is to follow.
- November** Beautiful Savior develops a mission program to aid Ethiopians through the WELS Committee on Relief. \$460 dollars are collected and donated.
- 7 After many months of drafting, revising, approving, and signing the congregations constitution is adopted.
- 9-10 Mission Counselor Marvin Radtke comes to Atlanta to discuss the land sites. The hope is to narrow down on one site and then pursue the cost estimate for building.
- 26 After Mission Counselor Radtke comes the voters meet and go ahead in getting cost estimates for the Old Alabama Road site.
- November-December** The Christmas season schedule:
 Nov. 22 Thanksgiving service (Resurrection at 10:00a.m.)
 Dec. 23 Children's Christmas Program (Resurrection at 4:00p.m.)
 Dec. 24 Christmas Eve service (Resurrection at 7:30p.m.)
 Dec. 25 Christmas Day worship (Resurrection at 10:30a.m.)
 Dec. 31 New Year's Eve worship (Resurrection at 7:30p.m.)

1985

- January 6** Beautiful Savior moves its worship 1 ½ miles North of Roswell Funeral Home to “Backstage” dance studio. Bible hour remains at 9:15a.m. with worship remaining at 10:30p.m. (*See appendix page 14*)
- February 24** The voters assembly meets to discuss the possibility to divide the present congregation into two mission congregations. The motion was accepted with the support of the BHM.
Pastor Guse receives a call to serve Resurrection Lutheran in a dual parish setting with Beautiful Savior. Pastor Guse drafted a letter to return the call.
- March 10** Pastor Harold Hagedorn is called by the DMB to serve as missionary to the Norcross-Duluth mission. Pastor Guse will remain pastor of the Beautiful Savior congregation in NE Marietta. Pastor Hagedorn returned the call on April 7.
- 19** Beautiful Savior officially organizes a Ladies Group. The Women begin organizing to take part in LWMS.
- 24** Beautiful Savior officially organizes a choir. The choir begins to prepare for Easter.
- April 4-7** The Easter Schedule:
Maundy Thursday (Resurrection at 7:30p.m.)
Good Friday (Backstage at 7:30p.m.)
Easter Sunrise (Resurrection at 6:30a.m.)
Easter Breakfast (Resurrection at 7:15a.m.)
Easter Breakfast (Parsonage at 8:30a.m.)
Easter Festival (Backstage at 10:30a.m.)
Easter Festival (Resurrection at 12:30p.m.)
- 7-21** A series of open meetings take place to evaluate plans for the two new missions. The agenda includes land searches, evangelism, and outreach.
- May 21** Jerry Ewings, a graduate from the seminary class of 1985, has been assigned as pastor to the Norcross-Duluth mission. His installation is planned for July 14th.
Rick Miller has been assigned from the seminary to serve as vicar to Beautiful Savior. He will be installed September 1st.

June	3-4	Mission Counselor Radtke returns to Atlanta to discuss land options in both areas. He will be talking about methodology and target areas.
	9	Beautiful Savior's Land Search Committee continues to view land options. <ol style="list-style-type: none"> 1. A site on Sandy Plains Road 2. A site on Shallowford Road 3. Other alternatives are being looked into
	29	Pastor Guse and his family move into the NE Marietta mission field where the Beautiful Savior mission will plant itself. The new parsonage is located at 5100 Ravenwood Drive, Marietta, GA 30066.
July	14	Pastor Jerry Ewings is ordained and installed at the Goodage Center, in Jones Bridge Park at 4:00p.m.
August	25	All the members who will form the Norcross-Duluth mission meet to discuss a name for the new mission and a place of worship, as well as other topics. The new name chosen was Messiah Lutheran Church.
Aug. 31 - Sept. 2		Members of Beautiful Savior take part in an area "Lutheran Labor Day Retreat" in Carrollton, GA. This will be the first of many to follow.
September	1	Attorneys are reviewing contracts for land. Beautiful Savior is making a bid for the six acres of land on Shallowford Road. Messiah Lutheran is also making a bid for 5 acres of land at the junction of Webb Bridge Road and Kimball Bridge Road. The hope is that both missions will be land owners by the end of the month.
	8	Rick Miller is installed as Beautiful Savior's new vicar.
	29	The members of Beautiful Savior and Messiah Lutheran hold their last Sunday worship together. The service is a communion service. After a picnic at Jones Bridge Park the two mission congregations part ways.
October	6	Messiah Lutheran continues to hold services at Backstage dance studio. Beautiful Savior moves its services to Allatoona Academy in Marietta. <i>(See appendix pages 15 & 16)</i>
	27	Beautiful Savior joins Sola Scriptura for a Reformation service at 4:00p.m.

November

The contract for land on Shallowford Road has been signed by all parties. Beautiful Savior has 30 days to settle their contingencies and concerns. Soil borings were completed at a cost of \$1,000. There are other concerns being ironed out (sewer, widening of roads, fire hydrants, storm sewers, parking lot, grading, and easement across private property). If these concerns are met then plans to seek an architect will be made. The hope is that final closing on the land will take place sometime in March.

17 Beautiful Savior gears up for a big Christmas push. Door hanger bags have arrived. Church brochures and literature are printed. Canvass/survey sheets are prepared. Pastor and vicar plan to follow up on the prospects received.

19 A Cradle Roll program is in the progress of being installed.

28 Thanksgiving Eve service is held at Allatoona Acedemy at 7:30pm.

December

The Christmas Schedule:

Dec. 22 Children's Christmas Program (Allatoona at 4pm)

Dec. 24 Christmas Eve service (Allatoona at 7:30p.m.)

29 Due to the results of the soil borings and satisfaction of other concerns, a targeted closing date on the land is set for February 1, 1986. A development plan is submitted to the Cobb County authorities. Upon acceptance Beautiful Savior will seek to hire an architect.

Although Beautiful Savior has not yet officially closed on the Shallowford land site, the seller has agreed to let Beautiful Savior put up a sign for community awareness.

1986

January

1 Beautiful Savior and Messiah hold a joint New Year's Eve service in the Anchor Bank meeting room at 7:30p.m.

31 Beautiful Savior closes on the Shallowford Road site. They are official land owners. The deal was for 6.32 acres of land for \$180,000.

- 31 Building plans have been finalized and have been submitted along with a loan request for \$270,000. If the BHM acts on it this month construction could begin in February 1987.
- September**
- September ushers in a "Stewardship Month." This month will include a series of sermons, Bible classes, and cottage meetings. This will allow members of Beautiful Savior to grow in appreciation of God's blessings and in understanding how to use them to his glory.
- 7 Tim Schoeneck is installed as Beautiful Savior's new vicar.
- October**
- 19 The women of Beautiful Savior take part in a clothing drive for the Lutheran World Relief Clothing Drive.
- 26 Beautiful Savior joins Sola Fide in a Reformation festival at 4:00p.m. This is naturally followed by a fellowship potluck.
- November**
- Beautiful Savior once again seeks to acquire newcomer lists. Information packs are sent out and followed up by phone surveys.
- 2 Beautiful Savior moves its place of worship from Allatoona Academy to Mabry Middle School. This is 5 miles West of the present location. The times of Bible class and worship remain at 9:15a.m. and 10:30a.m. (*See appendix pages 15 & 16*)
- 26 Thanksgiving Eve service is held at Mabry Middle School at 7:30p.m.
- 30 Beautiful Savior's Stewardship Committee hands out "Time and Talent" sheets to its members. This is done to draw from members willingness to serve in certain areas of ministry.
- December**
- The Christmas season schedule:
 Dec. 3-17 Midweek Advent services (Resurrection at 7:30p.m.)
 Dec. 20 Children's Program (Resurrection at 5:30p.m.)
 Dec. 24 Christmas Eve (Mabry Middle School at 7:30p.m.)
- During December Beautiful Savior collects canned goods for the homeless and needy in the Atlanta area.
- 14 Beautiful Savior holds an open forum for congregational input on the future design of the sanctuary.

1987

- January**
- 1 Beautiful Savior holds a New Year's Day service jointly with Resurrection at 10:00a.m.
- 9-11 Beautiful Savior hosts a "Witness Weekend." Members from the District's Evangelism Committee come to help members express the love of Jesus that fills their hearts.
- 18 Beautiful Savior begins to make plans as they help host the WELS International Youth Rally in August. Between 800-1,000 teenagers are expected to attend.
- 27 The Beautiful Savior women invite a guest speaker from the Bethesda Lutheran Home in Watertown, Wisconsin for a presentation.
- February**
- Subcommittees have been formed out of the Building Committee. They will assist the Building Committee with structural design, landscaping, decorations, sound, and the church dedication service.
- 21-28 In preparation for a future canvass effort, members distribute 2,500 door hangers around target neighborhoods.
- March**
- 1-6 Four students from DMLC use their spring break to help members canvass 2,400 homes.
- 4 Midweek Lenten services begin and are held jointly with Resurrection at 7:30p.m.
- 29 The finalized building plans are presented for the congregation's approval. The seeking of bids hopes to begin in May and groundbreaking to take place in June.
- April**
- The Easter season Schedule:
April 16 Maundy Thursday (Resurrection at 7:30p.m.)
April 17 Good Friday (Resurrection at 7:30p.m.)
April 19 Easter Breakfast (Mabry Middle School at 9:00a.m.)
Easter Festival (Mabry Middle School at 10:30a.m.)
- 4 Beautiful Savior's 5-8th graders form an official organization entitled the Little Lutheran League (LLL). This hopes to build up Beautiful Savior's future church leaders.

- 16-25** Two seminarians use their Easter break to help Beautiful Savior follow up on 500-700 homes of prospects.
- May** The Building Committee brings a report the WELS GBHM has approved the final plans for the new church. The building packages are being compiled to be submitted to various contractors. The responses are expected to return in 4-6 weeks.
- 19** Gary Kluball is assigned from the seminary to be Beautiful Savior's new vicar.
- June** **16** Bids are received from various contractors. The bids come in at \$410,00 - \$460,000 which are \$200,000 higher than anticipated. Negotiations begin with various contractors to lower the overall cost.
- 22-26** Beautiful Savior hosts a VBS program. It runs from 9:15a.m. - 11:45a.m. There were thirty-five children present.
- August** The building plans are temporarily put on hold as the lowest bid comes in at \$340,000. This is still \$100,000 higher than hoped for. The Building Committee meets to discuss various options:
1. Request a larger loan from synod.
 2. Continue to seek contractors.
 3. Redesign the chapel to bring down costs.
 4. Have Beautiful Savior members do some of the work themselves to save on labor costs.
- 10-14** Beautiful helps host the WELS International Youth Rally. There were 1,200 youths present.
- 28** Beautiful Savior bids farewell to Vicar Tim Schoeneck as he returns to the seminary for the final year of his training.
- September** **6** Gary Kluball is installed as Beautiful Savior's new vicar. The Building Committee seeks to negotiate a congregational participation contract with Butrill Construction Company. Groundbreaking is expected in October.
- 27** A building contract is finalized and submitted to the Synod Office Building for review.
- October** **25** Beautiful Savior holds an onsite groundbreaking service. Everyone present turned over a shovel full of dirt. Grading of the property begins and a retention pond is installed.

February 17 Beautiful Savior begins its midweek Lenten services. They are held jointly with Resurrection at 7:30p.m.

21-22 In preparation for a major canvass effort, members distribute 2,400 door hangers around target neighborhoods.

The four walls of the church are being framed and insulating board is being put in place.

February 28 - March 5 Five students from DMLC use their spring break to help Beautiful Savior canvass 2,200 homes.

March

The rough carpentry of the church is in full swing. Many of the walls are up, the windows are installed, and part of the roof is on.

Members continue to work on constructing the altar, a lectern and pulpit. The Dedication Committee has planned the church dedication service for July 10, 1988.

5 Beautiful Savior begins to get involved in the church building to cut down on labor costs. The workdays are set up for every Saturday of the months to come from 8:00a.m. - 5:00p.m. Members begin work on framing the interior walls and cleanup of debris. (*See appendix page 17*)

10 The center and side beams for the ceiling are put in place.

12-13 Beautiful Savior members do follow-up work on prospects received from the pre-Easter canvass. Members divide up into groups of two and are given a list of about twenty names.

16 Electricians begin installation of wires for power and lighting.

19 Members continue their workdays by staining the ceiling panels and cleaning up debris.

23 The church windows are installed.

26 Members continue their workdays by installing insulation and cleaning up debris.

March - April

The Easter season schedule:

March 31 Maundy Thursday (Resurrection at 7:30p.m.)

April 1 Good Friday (Resurrection at 7:30p.m.)

3 Easter breakfast (Mabry Middle School at 9:00a.m.)

5 Easter Festival (Mabry Middle School at 10:30a.m.)

- April**
- 1-11** Two seminarians use their Easter break to help Beautiful Savior follow-up on prospects uncovered during the Easter season. 350 homes were canvassed.
- 13** Bricking of the exterior begins on the church.
- 16** Members continue their workdays with more staining, painting, and cleaning up debris. *(See appendix page 18)*
- 21** The A/C and duct work are being installed.
- May**
- The bricking of the church is being done. The shingles are being installed. The roof is expected to be completed during the first week in May.
- 15** The parking lot is completely paved with paint designating the parking spaces.
- 17** Paul Koelpin is assigned from the seminary to be Beautiful Savior's new vicar.
- 20** The drywall is installed and taped.
- 20-21** Beautiful Savior members participate in an evangelism workshop entitled "Gearing Up For Evangelism." It is hosted at Sola Fide. Members learn how to continue to play an active role in outreach.
- June**
- Most of the brick work has been completed. The interior walls and drywall work is in progress. The large sanctuary windows are installed. A 16' x 20' storage shed has been purchased.
- 1** The ceiling boards are installed.
- 11** Members continue their workdays with painting, staining, cleanup, and landscaping.
- 19** The church Dedication Committee establishes July 10 for its dedication service. The service is to be held at 4:00p.m., with President Mischke as guest speaker.
- 26** Beautiful Savior distribute invitations for the upcoming dedication service.

July

- 1** The carpeting and sod were delivered to the church property for installation. (*Note: The carpeting was not installed until three days after the dedication service*)
- 1-9** The church landscaping is in full swing. Members bring rakes, shovels, and wheelbarrows to assist in the effort. This is the last of the congregational workdays. Final cleanup and finishing touches are being done on the inside.
- 7** Beautiful Savior holds a practice worship to make sure everything works properly for the dedication ceremony.
- 10** The church dedication takes place at 4:00p.m. There were 297 worshippers in attendance (94 members - 203 guests). The service is followed by a potluck at McCleskey Middle School. The supper is followed by a parsonage open house.
Beautiful Savior rejoices in the Lord's blessing of a permanent church home: (*See appendix page 18*)

Beautiful Savior Lutheran Church
2240 Shallowford Road NE
Marietta, GA 30066

SOLI DEO GLORIA

PART II

**ATTITUDE
OF THE
MISSION**

Resource Persons

Pastor John Guse Pastor Guse is the founding pastor of Beautiful Savior Lutheran Church presently located in Marietta, Georgia. At present he is still serving Beautiful Savior and still acting as the South Atlantic District President. Pastor Guse recalls quite vividly many of the events that transpired during these early years.

Mr. John Wempner John Wempner has been with the since it started until his departure to Ohio in 1991. John Wempner served for many years on the church council. In his service he acted as President, Building Committee Chairman, and a host of others. John Wempner was one of the prime initiators for getting the mission up and going. His thoughts are included in this section.

The challenges many mission congregations face are often unique to their individual situations. Beautiful Savior was not without many unique challenges from its very beginning. *New* not only describes the members and the mission, but also the pastor. When Pastor Guse arrived in Atlanta he was already serving as the District Mission Board Chairman. It was in June of 1984 he took on the responsibilities of the South Atlantic District President (SADP). Not only was Pastor Guse faced with learning the duties of the SADP, but he was also faced with learning the mission field he was called to serve. The division between the two necessities would become a very important factor in the years to come. As SADP Pastor Guse often found himself out of the area. Long hours were spent making up for lost time as days and parts of weeks were spent elsewhere. Pastor Guse feels, "Maybe Beautiful Savior would be a lot farther along today if my time had not been divided." Yet by the grace of God mission calls, prospect visitations, and laity training progressed at a slow but steady pace. God in his great wisdom had his own plan in mind for Beautiful Savior; a plan that would not be foiled.

As SADP Pastor Guse was able to be a great blessing to the new mission congregation. John Wempner remarked, "Pastor Guse provided a great deal of mission awareness, particularly since the SA District was essentially a mission district." Pastor Guse was able to bring the mission of the Synod home to the small mission of Beautiful Savior. Even though Pastor Guse was required to be absent, God brought forth strong spiritual lay leaders who offered their services for many areas of the church's ministry. The members matured as the congregation grew realizing this mission effort was their mission and their church.

The success of any mission congregation depends greatly on the relationship between the pastor and the sheep he has been called to serve. A great respect for one another was formed from the very start. The mission was clear: to build up the family of God. Pastor Guse remarks about the founding members, "You could not find a more committed, dedicated and eager core nucleus." Although some members brought more gifts to the table than others, the fruits of faith were evident in all the members. It was very comforting and encouraging for the members to see their pastor was as eager and enthusiastic to see the mission grow as they were.

The support of the members toward their mission congregation was unparalleled. Beautiful Savior was centered around the business district of Atlanta and many members were either transferring in or transferring out. It always seemed the Lord gave back to the congregation that which he had taken away. There were always strong leaders to carry out the church's ministry (*See appendix page 10*). A rare blessing the Lord bestowed upon his church was that Beautiful Savior never saw drastic financial problems. Even when the funds seemed to be running out, members would be moved to invest more funds into the areas of outreach, ministry, mission offerings, and programs. Stewardship programs were often drawn up for the benefit of the congregation. The thought was that new Christians need time to grow in stewardship and in Christian life and faith. The example of Christian leaders bearing a hundred fold set good examples for those Christians who bore a lesser harvest.

As the members grew in their love for the Lord, the love they had towards one another also grew. Christian fellowship came natural for the members of Beautiful Savior. The fellowship practiced in worship and prayer naturally carried over into other aspects of members' lives. Pastor Guse makes mention, "The people worked hard together and their faith carried over into enjoying each other's company." The members viewed themselves as a family of transplanted people. The

fellowship activities were very important to them. Picnics and potlucks seemed to be the favorite of the Germans. Many events such as bowling, road rallies, rafting, theater, skating, and parties provided appreciation and respect for one another. Members also saw these fellowship activities as a great tool in the area of friendship evangelism.

The members also saw themselves in fellowship with the larger body of Christ. With the aid of Pastor Guse, Beautiful Savior always held a very positive view of the synod as a whole. The word "synod" as it means walking together is just what Beautiful Savior did in being part of a larger family. Even though the early requests for mission status and CEF allocations were deferred, these were the decisions of people whom the Lord has placed in service to them. Beautiful Savior recognized the blessings of being part of a synod. The synod provided subsidy, a loan for land, pastors, vicars, hymnals, Sunday School materials, and much more. Beautiful Savior showed their love back to the synod by setting aside 20% of its budget for their mission offering. Even though there were slight setbacks, Beautiful Savior realized the Lord of the Church follows his timetable and his alone. Beautiful Savior understood the synod was there to help them carry out the work the Lord had commissioned them to do.

Beautiful Savior began its mission around the Word of God. Bible classes were of prime importance to the members and their pastor. These early Bible classes were usually held at the parsonage or in members' homes. Being surrounded by the Word, Beautiful Savior set the foundation for ministry and future decision making. John Wempner thought the Bible classes strengthened the congregation in its resolve to do mission work in response to the gospel. These Bible classes allowed members to grow closer to their Savior, as well as set the course for the congregation in the years to come.

The members also saw the need to allow the youth to grow in their personal faith. Even though the congregation was actively involved in outreach, it was not until years later that its youth ministry began to take shape. The congregation did have a Sunday School program from the very beginning. Teen ministry was very difficult in the early years since most of the teens were attending synodical schools. Pastor Guse admits, "The nurturing of children was of low priority in the beginning, and probably could have been a good 'hook' in the fishing for souls." As the congregation placed more and more emphasis on childhood education a teen class and Little Lutheran League (LLL) was developed. One of the reasons why childhood education was of low priority was because the temporary places of worship did not always accommodate such activities.

Each temporary place of worship had its positives and negatives. The first place of worship was the Holcomb Bridge Early Learning Center. The main reason why this place was chosen was its location. It was in the center of the beginning target area. It provided a big enough area of worship and many downstairs rooms for storage. Old red chairs were purchased for worship. The members decided they would look better if they were painted blue. Little did the members know they would have plenty of time to view them during the next 5 years. The building also provided a place to hold nightly meetings when needed. Due to an excellent working relationship with the owner many things were accomplished. Yet the building presented Beautiful Savior with many challenges. There were large open windows behind the altar, which caused many distractions during the summer months. There was very limited space for parking. One of the major problems Beautiful Savior faced was the rearranging of the day care for worship. Many hours were spent before and after the service putting everything back in its proper place. The congregation left this place for two reasons. A new owner took charge of the facility and wanted

the church out. The second reason was more positive. The Lord blessed Beautiful Savior with growth so that the present area of worship had reached its capacity. The members thought a larger place would be more visitor friendly.

The mission congregation found a new home at the Roswell Funeral Home. The owner took Beautiful Savior in on a temporary basis until a new location could be found. The worship atmosphere was increased by having a chapel. The pews were a warm welcome to setting up and taking down all of those blue chairs. The funeral home was located in the middle of town and could easily be found. It offered a good place for worship but no rooms for Sunday School. The congregation had to be out by 1:00 p.m., and nightly meetings had to be held in members' homes. The members found it difficult to do outreach at this location. Inviting prospects to a funeral home did not always seem too appealing. Beautiful Savior saw the Lord's blessing as they were given another place of worship.

Only one-half mile from the funeral home the congregation took up residence in "Backstage" dance studio. Once again the blue chairs were pulled from storage and the setting up and taking down commenced. The studio did offer a place to store all of the church's equipment. The studio was also located on a major road which allowed for easy access for members and prospects. The parking lot was inadequate for church parking. The studio also had large mirrors on all sides. The mirrors were a cause for distraction, but it also allowed the congregation to feel twice as big as it was. It was at this place the mission divided into two groups and the Beautiful Savior mission moved in the direction of Marietta, Georgia.

It could be said Allatoona Academy was the first real location of Beautiful Savior, Marietta. This larger day care center offered a large room for worship and many smaller rooms for Sunday School. All the church's equipment had to be stored in an outdoor storage shed and

then hauled in from the outside. Some of the teachers at the academy complained about the way things were moved around and misplaced. Beautiful Savior members resorted to making maps beforehand so everything could be put back in its original position. Toys, coloring books, and crayons were even placed back on the floor in the middle of the room. Allatoona Academy offered a location in the middle of the target area. By God's grace outreach in the community took off and the mission started to see growth (*See appendix page 11*). There was so much growth Beautiful Savior began looking for another place of worship.

The last temporary place of worship for the Beautiful Savior congregation took place at Mabry Middle School. There was ample room for worship and plenty of parking spaces. It ended up being only a few miles from the church's permanent location. There was no place for storage. Many dedicated members took to loading all the church's equipment in the cars and storing it in their basements. This was reason enough to praise God when he finally gave a permanent church home. All the costs of the places of worship were considered to be reasonable (*See appendix pages 13 - 15*).

The decision to split the young mission into two separate missions came after much discussion. The request came from the office of the DMB and the GBHM. The mission field that lay ahead of them seemed to be better served by two missions. At first the proposal was met with some opposition. The thought of losing the family unity many of the members shared seemed to be unbearable. However the advantages for furthering the kingdom of God proved too great not to split. Even though the mission was young in years and small in number, a unanimous decision was made to work with the DMB/ GBHM to divide into two missions. Pastor Guse saw a number of advantages in dividing the mission congregation. The congregation had not yet purchased land so there was no debt to hinder the split. Both of the areas to be served were booming in

population and growth. The core nucleus was full of strong leaders who could handle the breakup. Overall the congregation realized this is the way the Lord would have them go. The congregation showed its maturity as the split displayed a wonderful example of Christian love. At the last joint service Pastor Guse made use of the theme “Tears of Parting” as their family would now go their separate ways. It was a hard decision to make, but it was made all to the glory of God.

There were several reasons for the expected growth of the mission. The Beautiful Savior congregation was confident that the Lord is the one who grows his church. Atlanta was also more of a melting pot of the northern population rather than a southern city. The business and corporation migration to the area brought many new jobs and people to fill those positions. Due to the change more families tended to begin “church shopping.” The mission did not progress without many challenges. Atlanta was in the heart of the Bible belt. Baptist and Methodist denominations had a stronghold in many areas. Lutheranism was often viewed as liberal and into social theology. This was the result of the ALC and LCA impact on the South. Many people in the South did not (and still do not) distinguish between different Lutheran synods, much like the people in the North who have a hard time distinguishing between the many Baptist varieties. Another hindrance was the “consumerism” ideal many people held to. As people looked for churches they searched for ones that could best meet their needs. The unchurched and “church shoppers” were less concerned with doctrine and more concerned about childhood education, fellowship, singles groups, and socials. Beautiful Savior was slow in meeting the needs of the people in the community in the early years. Still the Gospel was proclaimed and the Lord bestowed his blessing.

The mission field from Holcomb Bridge to Marietta remained relatively the same. The area was beginning to explode with many new subdivisions. The area saw an influx of young families with many children. Throughout the early years Beautiful Savior witnessed many new middle schools being built. The influx of children drove many elementary and high schools to capacity. The area was made up of many white collar families ranging from 25 - 40 years old. Many professional men and women in the mid-upper class were buying expensive homes in the area and commuting to the city for work. Marietta came to be one of the fastest growing areas in the county. The Lord had given his mission church many opportunities to proclaim his wonderful message.

Beautiful Savior is living proof people do not need a church to do effective mission work. Some members felt it was a little harder to do mission work without a church facility. Pastor Guse thought, "Witnessing to prospects and following up on them was neither harder nor easier with a church or without one. Once they were prospects because of some contact we had with them it was no problem." Although getting people to become prospects was sometimes difficult, on account of the newness of the church and having the label "Lutheran." Even though Beautiful Savior was small it did have its advantages. Many people were drawn to the idea of belonging to a small mission church that was just starting out. The aid of the Holy Spirit, timely contacts, and faithful follow-ups proved more effective than did having a church home.

Beautiful Savior went about proclaiming the gospel to the community in a number of ways. The biggest part of their efforts came in using canvass/ survey teams. Beautiful Savior members were eager to distribute materials around the neighborhoods. Beautiful Savior was also blessed by the volunteered services of TCW teams from our synodical schools. These Travel Canvass Witness Teams proved to be a blessing in many areas. The students' hard work and good

behavior put the congregation's name out into the community in a positive light. The students were able to get a taste of the mission experience and spend time among caring Christians. The members of Beautiful Savior were drawn closer to the work of our synodical schools. The congregation became all the more acquainted with what a synod is and does. They were able to see their mission offerings at work in their own area. The students left good impressions for Beautiful Savior's own children who were maybe thinking about entering into the full-time public ministry.

Beautiful Savior was always at work in making an impression on the community. The members made signs and made use of the community yellow pages. Radio and public service announcements also provided extra community awareness. VBS also helped draw attention to the mission as thousands of invitations were handed out. Pastor Guse mentions the best form of evangelism Beautiful Savior experienced came in the form of members inviting their friends, relatives and associates. Beautiful Savior was a young mission with young mission ideas. As the mission grew so did its tact and creativity in evangelism in the years to come.

The vicars assigned to Beautiful Savior greatly assisted with the outreach of the mission. The debate still continues as to the best place our synod should train its vicars. Some argue vicars are better trained in larger more established churches. Pastor Guse sees the answer somewhere in between. "It is the Lord who puts his servants into the areas where he would have them trained." The vicars may have missed out on the structure of a large congregation and the multitude of different committees, yet, Beautiful Savior's vicars learned how the main committees were formed from ground level and the role they served. In light of Pastor Guse's absence Beautiful Savior's vicars were often left unattended. These men learned to develop qualities and gifts on their own. Such qualities included being a self-starter, taking the initiative, people skills, tact in evangelism,

and creativity. This is not however implying such qualities are not learned in larger congregations. The members of Beautiful Savior took great pride in their vicars. The vicars were an added blessing to the organization and execution of outreach programs. The Lord only knows what is in store for his servants. Perhaps the experiences learned at Beautiful Savior would be a unique blessing to their future ministries.

As Beautiful Savior searched for land during the early years many sites became available. It was after the split of the two mission Beautiful Savior began to locate plots of land in their new target area. There were many sites that were looked at but nothing ever really developed from them. Either they were odd shaped plots, too small, or they were just too expensive for the church's budget. When the site on Shallowford Road became available Beautiful Savior jumped at the chance to own it. It was on a heavily traveled road, in the midst of the target area and had good visibility. Since there were no objections from the members or the synod, Beautiful Savior closed on the land. The attitude of the members was that this is where the Lord must want us. The members were overwhelmed with the closing on the land. They could now get moving on the building program.

When the contractor bids for the new church came in way over budget, the congregation entered a joint contract to do some of the work themselves. This would save greatly on labor costs and be in keeping with the church's budget. It can be said the congregation entered the contract out of necessity not wanting to sacrifice the quality of the project. The congregational work on the building turned out to be a fellowship blessing. The members were eager to donate their time and abilities in the construction of the church they had so long awaited. The more the building neared completion the more the congregation's enthusiasm filled the air. All the work

done by each member was given to the glory of God for all the goodness he bestowed upon his people.

As dedication day approached the congregation began to see their long-range objective nearing completion. The congregation was eager to enter its next stage of growth and ministry. John Wempner remembers the eagerness to get into their new church home. They would no longer view themselves as the “wandering children of Israel.” Synod President Mischke was present at the dedication service to deliver the address. Even though the carpet and light fixtures had not yet been installed, it was a bright day for the members of Beautiful Savior. Many tears flowed from the cheeks of its members as they closed the service with singing of “To God All Praise And Glory.”

These early years bound the members of Beautiful Savior to each other in a very unique way. The Holy Spirit was at work building the bonds of faith, love, and friendship. Dedication day was a concrete image of how the Lord draws his people together for a common purpose to go along with their common faith. You could ask any of the members still present if they would go through the whole ordeal again. A smile might appear on their faces as memories of the Lord’s goodness fill their minds. Then they might respond with a simple, “Yes.”

Nowhere was there ever a printed out mission statement for the Beautiful Savior congregation. Yet its purpose for existing was very clear. No matter how small they were, they would proclaim the freedom Christ won on the cross. The Scriptures were their guide in every aspect of ministry. With the Holy Spirit leading the way, how could His mission go wrong?

SOLI DEO GLORIA

PART III

APPENDIX

GENERAL BOARD FOR HOME MISSIONS
WISCONSIN EVANGELICAL LUTHERAN SYNOD

3512 West North Avenue • Milwaukee, Wisconsin 53208 • (414) 445-40.

February 14, 1983

Reverend John Guse
1639 Jessamine Road
Lexington, South Carolina 29072

Dear Brother:

We are pleased to announce that the N. Atlanta, Georgia area has been granted exploratory status by the General Board for Home Missions. In addition, the General Board for Home Missions has granted the district mission board the right to call a pastor to serve the group and the general community. We call attention especially to point II.B3.11 of the Home Mission Handbook which applies to this situation.

Enclosed are forms and Handbook references which will be of great importance to the pastor conducting new exploratory work and hopefully to the group in moving towards mission status.

We pledge our prayers and cooperation to the group as it demonstrates its evangelistic commitment in reaching out to the unchurched of its area!

Sincerely,



Reverend L. G. Zwieg
Associate Executive Secretary

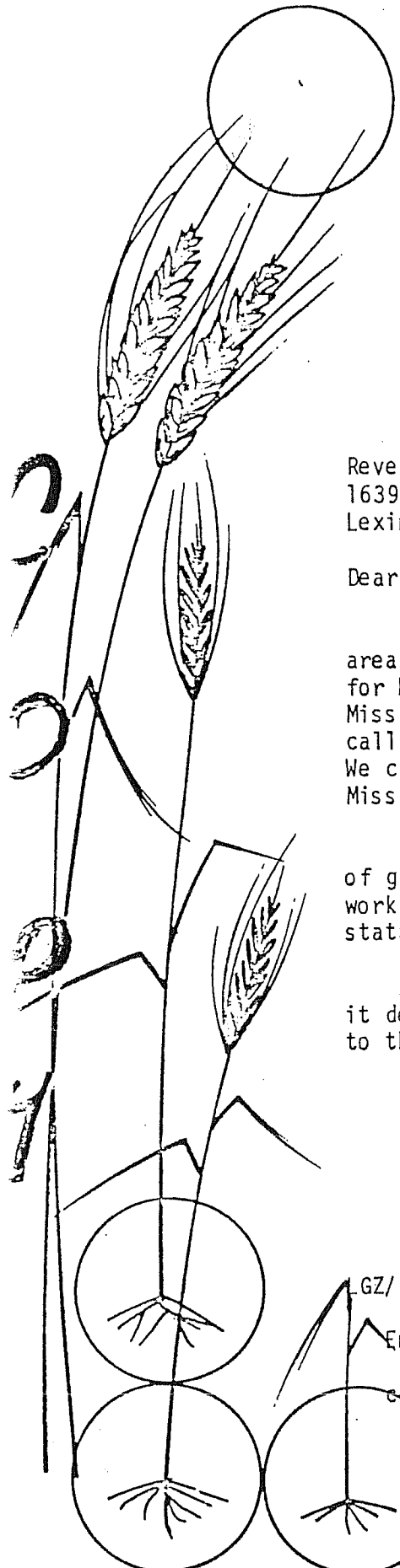
L.GZ/gs

Enclosures

cc: D. Gieschen, DMB Chairman

HELPING TO SOW THE SEED

CULTURE THE PLANT



GENERAL BOARD FOR HOME MISSIONS

WISCONSIN EVANGELICAL LUTHERAN SYNOD

3512 West North Avenue • Milwaukee, Wisconsin 53208 • (414) 445-4030

October 3, 1983

Beautiful Savior Exploratory Group
c/o Reverend John R. Guse
255 Jade Cove Circle
Roswell, GA 30075

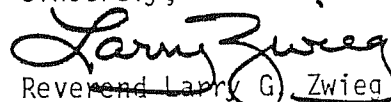
Dear Brethren:

Your request for mission status together with that of nine other groups was carefully considered by the General Board for Home Missions at its 9/20/83 meeting. Your request was one of seven which was deferred.

Along with considerations of priority the chief reason for the deferral was to permit your group to work with your resident pastor for a period of time to reach out more effectively and farther before the Synod makes a permanent commitment of large amounts of capital funds to the area.

We wish you the Lord's richest blessing during this formative period of your evangelical group!

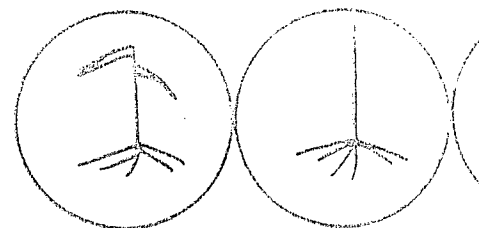
Sincerely,



Reverend Larry G. Zwieg
Associate Executive Secretary

LGZ:mb

cc: D. Gieschen
DMB Chairman



HELPING TO SOW THE SEED AND NURTURE THE PLANT

GENERAL BOARD FOR HOME MISSIONS

WISCONSIN EVANGELICAL LUTHERAN SYNOD

3512 West North Avenue · Milwaukee, Wisconsin 53208 · (414) 445-4030

October 3, 1983

Beautiful Savior Ev. Lutheran Church
c/o Reverend John R. Guse
255 Jade Cove Circle
Rosewell, GA 30075

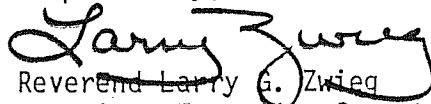
Dear brethren in Christ:

This is to inform you that the General Board for Home Missions in its meetings on September 19 and 20, deferred your congregation's request for Land Search Authority.

The deferral was necessitated by a GBHM policy which reads, "Land Search Authority should not be sought until a mission congregation is legally incorporated with the state within which it is located, since title to land is to be placed in the name of the congregation."

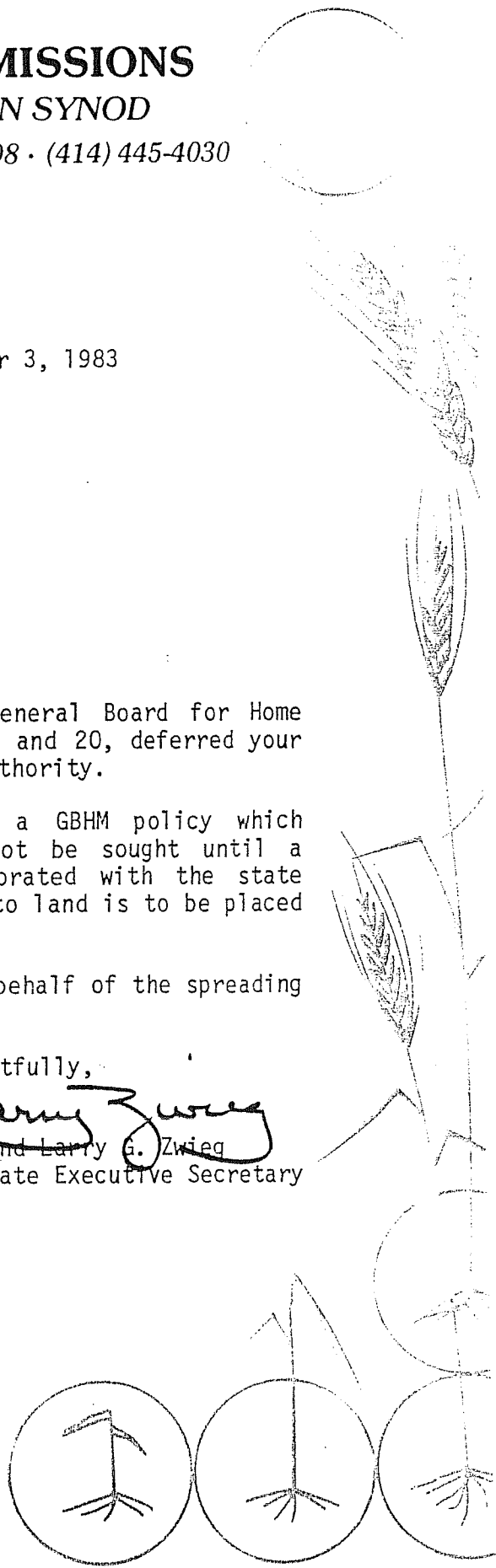
May the Lord bless your efforts in behalf of the spreading of His precious Gospel.

Respectfully,


Reverend Larry G. Zwieg
Associate Executive Secretary

LGZ:mb

cc: GBHM Chairman
DMB Chairman



HELPING TO SOW THE SEED AND NURTURE THE PLANT

GENERAL BOARD FOR HOME MISSIONS
WISCONSIN EVANGELICAL LUTHERAN SYNOD

~~3215 West North Avenue • Milwaukee, Wisconsin 53208 • (414) 445-40~~

February 28, 1984

Reverend John Guse
255 Jade Cove Circle
Roswell, GA 30075

Dear Brother:

Please inform the exploratory group at North Atlanta, Georgia that the General Board for Home Missions has granted it mission status.

Enclosed are forms and Handbook references needed in the days ahead as the mission congregation develops its program.

We rejoice with the new mission congregation at this sign of commitment by our Synod to work with the group permanently in our cooperative evangelistic work in the Lord!

We encourage your new congregation immediately to establish a Building Fund so that it can look forward to active participation in the funding of its future worship facilities.

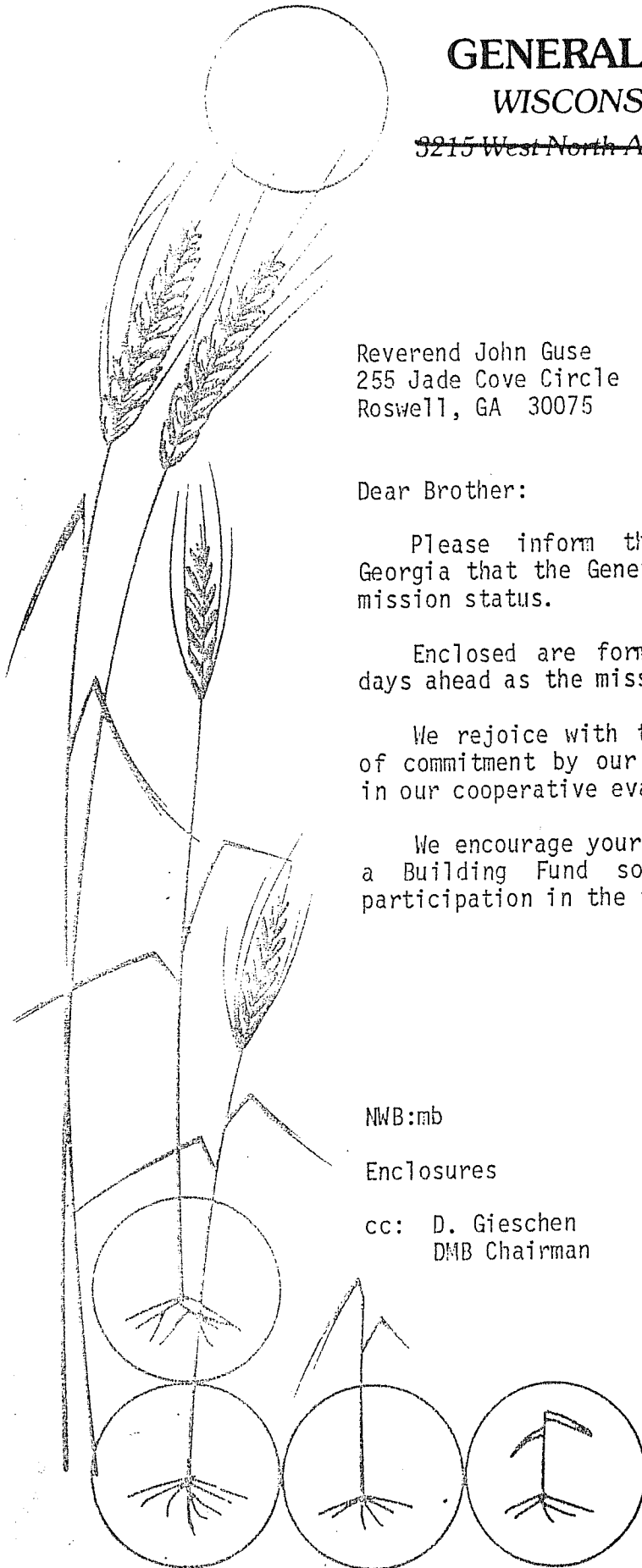
Sincerely,

Norman W. Berg
Norman W. Berg
Executive Secretary

NWB:mb

Enclosures

cc: D. Gieschen
DMB Chairman



HELPING TO SOW THE SEED AND NURTURE THE PLANT

A. Exploratory (Trial) Services

1. New

N. Glendale, AZ
N.E. Tucson, AZ
Amador Valley, CA
Aurora, CO
N.W. Toledo, OH

S.W. Anchorage, AK
DELTONA, FL
JUPITER, FL
OCALA, FL
N.E. San Antonio, TX

2. Continued

Albuquerque, NM
N.W. Denver, CO
Dickinson, ND
Parkersburg, WV
Poughkeepsie, NY
Roanoke, VA
Richmond, VA
Cincinnati, OH
Juneau, AK
Poway, CA
S. Waukesha, WI
Hayward, WI
Madison, WI (Hispanic)

CAPE CORAL, FL
DAYTONA, FL
MIAMI, FL (Hispanic)
San Angelo, TX
Sugar Land, TX
S.W. Fort Worth, TX
Abilene, TX
S.E. Austin, TX
Plano, TX
N.W. Houston, TX
BATON ROUGE, LA
Boise, ID

3. Deferred

S.W. Tucson, AZ
Gilbert, AZ
Newport News, VA
Saskatoon, SAS (Canada)

Fayetteville, NC
Fayetteville, AR
Sherman/Denison, TX
Fredericksburg, TX

B. Mission Status

Clovis, CA
Morris County, NJ
Kearney, NB
Wasilla, AK
S.E. Anchorage, AK

Portland, ME
N. ATLANTA, GA
St. Philips, (Milwaukee, WI)
Tyler, TX

Defer:

Albuquerque, NM
Poway, CA
Angleton, TX

S.E. Austin, TX
Sugar Land, TX
Hayward, WI

C. MANPOWER - a resident pastor is to be called)

N. Glendale, AZ
N.E. Tucson, AZ
Amador, Valley, CA
Aurora, CO
N.W. Toledo, OH
Morris County, NJ

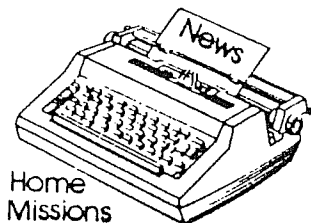
S.. Anchorage, AK
DELTONA, FL
JUPITER, FL
OCALA, FL
N.E. San Antonio, TX

Defer:

S.W. Tucson, AZ
Gilbert, AZ
Saskatoon, SAS (Canada)
Granite Falls, MN
Sherman/Denison, TX

Richmond, VA
Newport News, VA
HENDERSONVILLE, NC
Angleton, TX
Carroll College, WI (vicar for student work)

Fayetteville, NC
Bozeman, MT
Boise, ID
Fredericksburg, TX



D. Special Manpower Requests Granted

Minneapolis, MN (Campus Pastor-U of MN)

Milwaukee, WI (Campus Pastor- UWM)

Western Wisconsin District Mission Board to call a Mission Counselor who will serve the Midwest area.

E. School Related Requests

1. New School

CLEARWATER, FL

Bemidji, MN

2. Add to Staff

ANTIGUA - 4th teacher, funded by congregation at national pay scale

DECATUR, GA - 2nd teacher (part-time)

Deny: Virginia Beach, VA

3. Approved to Pay Tuition

SARASOTA, FL

ORLANDO, FL

CHURCH EXTENSION FUND PROJECT APPROVALS



A. Land Purchase

Clovis, CA

Milbank, SD

Traverse City, MI

Kearney, NE

Wasilla, AK

S.E. Anchorage, AK

N. ATLANTA, GA

Defer:

Albuquerque, NM

Russellville, AR

B. Planning Funds

Apache Junction, AZ (WEF)

Boulder, CO (B) (Relocation)

Gillette, WY (WEF)

Helena, MT (WEF)

Harrisburg, PA (Two-level "C")

Manassas, VA (WEF)

Medford, OR (WEF)

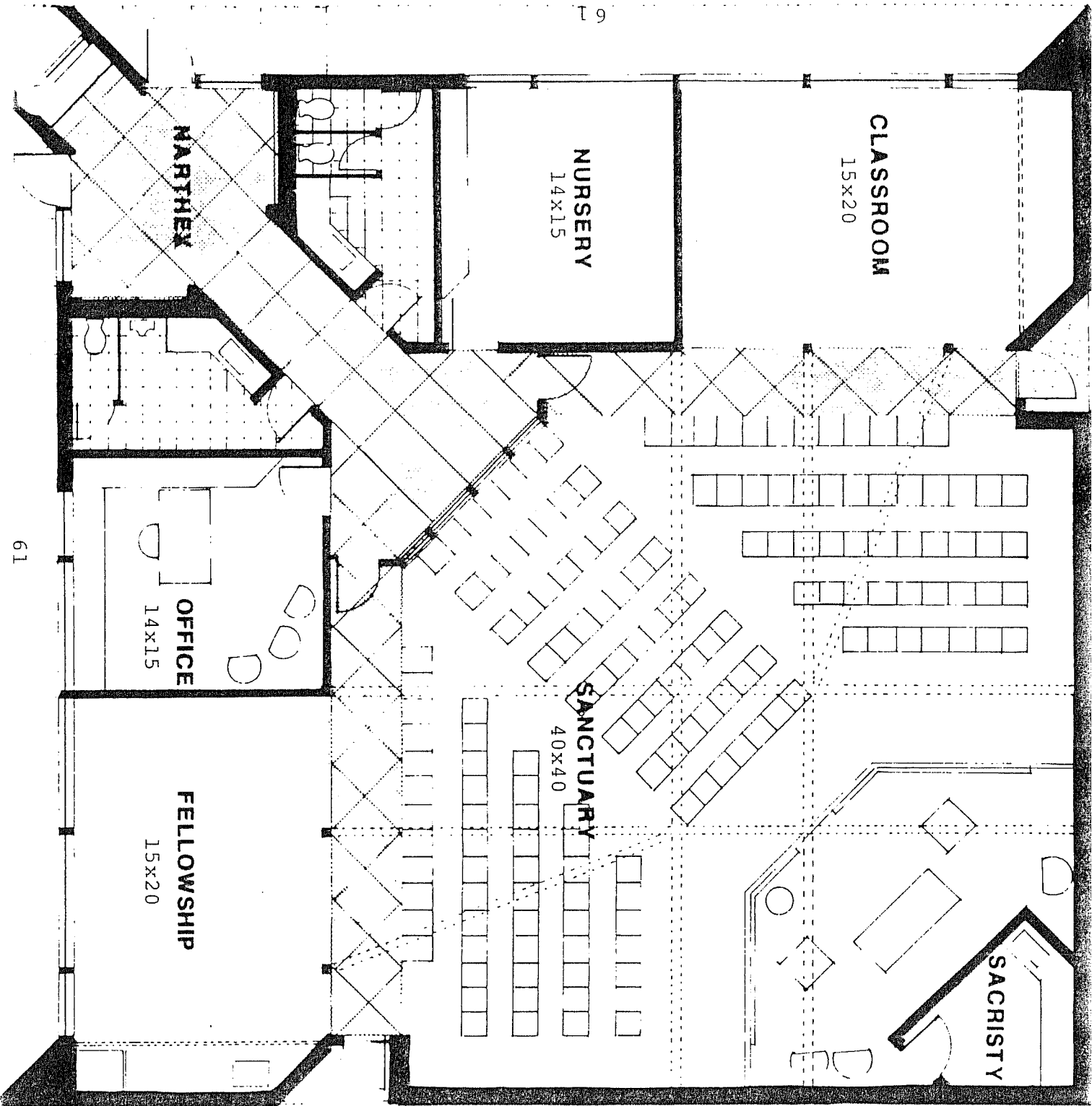
ST. JOHN'S, ANTIGUA (4 room school)

Merrill, WI (WEF)

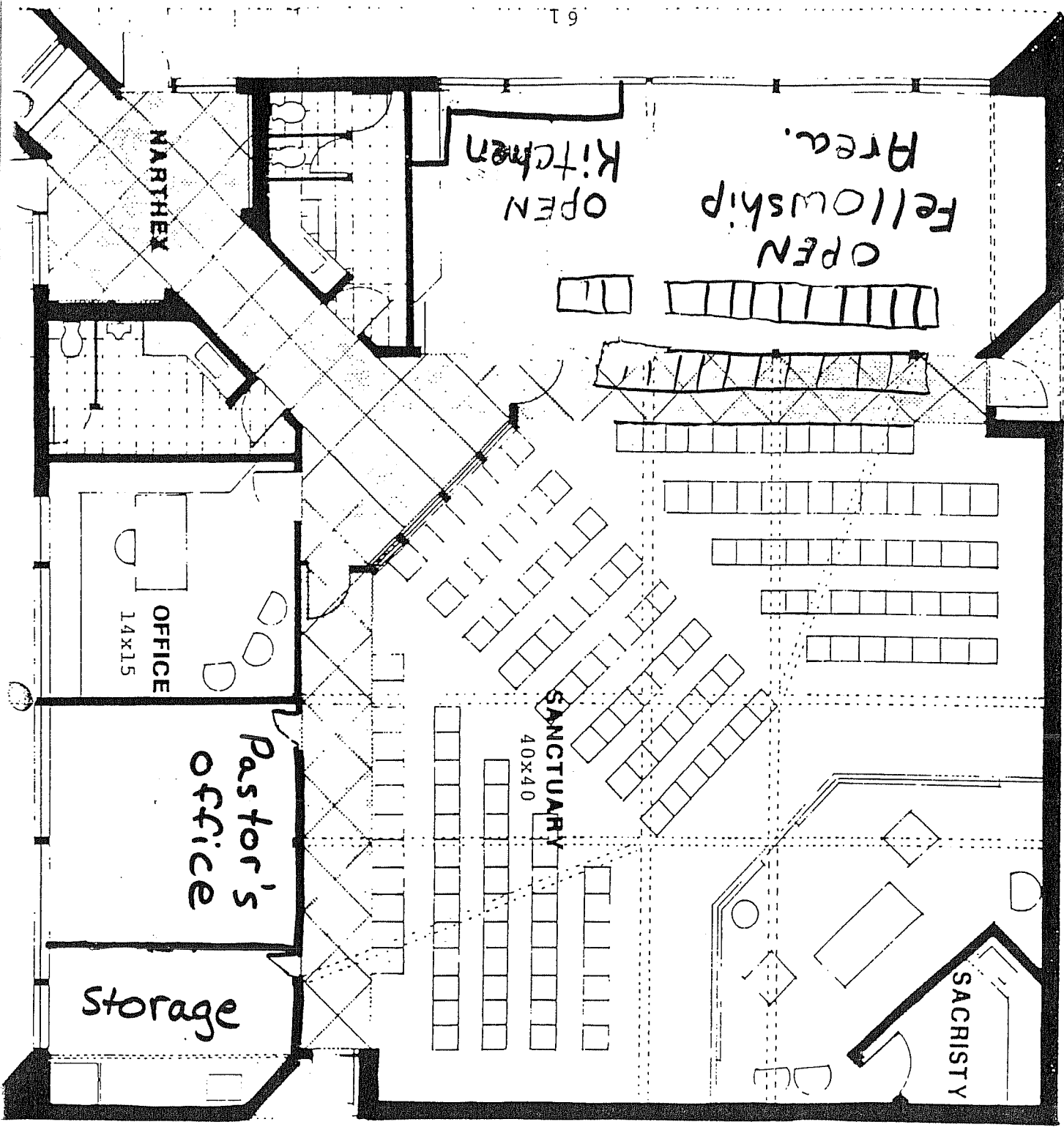
C. Chapel Allocations

	<u>CEF</u>	<u>Local</u>	<u>Total Cost</u>
Barre, VT (C)	113,000	14,000	127,000
Long Island, NY (C)	134,000	16,000	150,000
China Grove, NC (WEF)	117,750	3,000	120,750
<u>LEHIGH ACRES, FL (WEF)</u>	115,000	10,000	125,000
W. Chicago, IL (B)	225,000	25,000	250,000
Port Washington, WI	214,500	4,000	218,500
Faith, El Paso, TX (Add)	17,688	2,500	20,188
Mississauga, ONT (Add)	29,300		29,300

Deny: Hot Springs, SD



Please note:
 This is only a preliminary drawing. The final plan may vary from this, and probably will.
 If you have any comments or concerns regarding this plan please voice them to the Building Committee.
 A small model of this plan will be on display Sunday June 29th.
 This Building is approx. 3700 square feet. It is designed to ultimately seat 300 people. A present, seating for 160 is shown.



Beautiful Savior's *Acts Of Ministry*

Year	Baptism		Confirmations		Marriages	Funerals
	Child	Adult	Child	Adult		
1983	0	0	0	0	0	0
1984	4	0	2	3	2	0
1985	5	0	2	3	1	0
1986	0	0	4	1	0	0
1987	0	0	2	2	1	0
1988	7	0	3	0	1	0

Beautiful Savior's Church Council

1983

Tom Carmichael	Chairman
Gary Eckhardt	Evangelism
Jay Rantanen	Finance
Ward Wogsland	Secretary
John Wempner	Treasurer

1984

Tom Carmichael	Chairman
Ward Wogsland	Secretary
Gary Eckhardt	Evangelism
Jay Rantanen	Finance
John Wempner	Treasurer

1985

Ed Groeschel	President
Rick Hein	Maintenance/ Secretary
John Wempner	Treasurer
Jay Rantanen	Finance
John Spearman	Education
Gary Eckhardt	Stewardship/ Evangelism
Tom Carmichael	Elders

1986

Ed Groeschel	President/ Evangelism
John Wempner	Education/ Treasurer
Dale Woolsey	Elders
Rick Hein	Secretary/ Trustee
Nick Perenich	Stewardship
Jay Poppe	Finance

1987

Ed Groeschel	President/ Evangelism
Rick Hein	Secretary
Dale Woolsey	Elders
John Shauger	Stewardship
Roger Hauge	Education
Jay Poppe	Finance
Charles Faught	Treasurer
*John Wempner	Maintenance

1988

John Wempner	President
Hans Harlass	Finance
John Shauger	Stewardship
Peter Clover	Maintenance
Rick Hein	Secretary
Ken Wisniewski	Evangelism
Jay Poppe	Elders
Roger Hauge	Education
Charles Faught	Treasurer

* Building Committee Chairman

Beautiful Savior's Congregational Reports

1983 Annual Report

Souls	46
Communicants	36
Average attendance	52
Bible class	14
Sunday School	12
Synodical Schools	0

1985 Annual Report

Souls	64
Communicants	44
Average attendance	62
Bible class	15
Sunday School	18
Synodical Schools	3

1984 Six Month Report

Souls	59
Communicants	45
Average attendance	65
Bible class	15
Sunday School	15
Synodical Schools	0

1986 Six Month Report

Souls	64
Communicants	48
Average attendance	55
Bible class	21
Sunday School	20
Synodical Schools	3

1984 Annual Report

Souls	82
Communicants	56
Average attendance	65
Bible class	15
Sunday School	22
Synodical Schools	3

1986 Annual Report

Souls	82
Communicants	61
Average attendance	56
Bible class	16
Sunday School	16
Synodical Schools	4

1985 Six Month Report

Souls	77
Communicants	55
Average attendance	68
Bible class	15
Sunday School	18
Synodical Schools	3

1987 Six Month Report

Souls	87
Communicants	66
Average attendance	66
Bible class	20
Sunday School	20
Synodical Schools	4

1987 Annual Report

Souls	115
Communicants	88
Average attendance	67
Bible class	30
Teen class	6
Sunday School	23
Synodical Schools	4

1988 Six Month Report

Souls	137
Communicants	104
Average attendance	84
Bible class	20
Teen class	6
Sunday School	24
Synodical Schools	4

Beautiful Savior's Temporary Worship Facilities



Holcomb Bridge Early Learning Center
2675 Holcomb Bridge Road
Alpharetta, GA 30201

September 11, 1983 - August 26, 1984

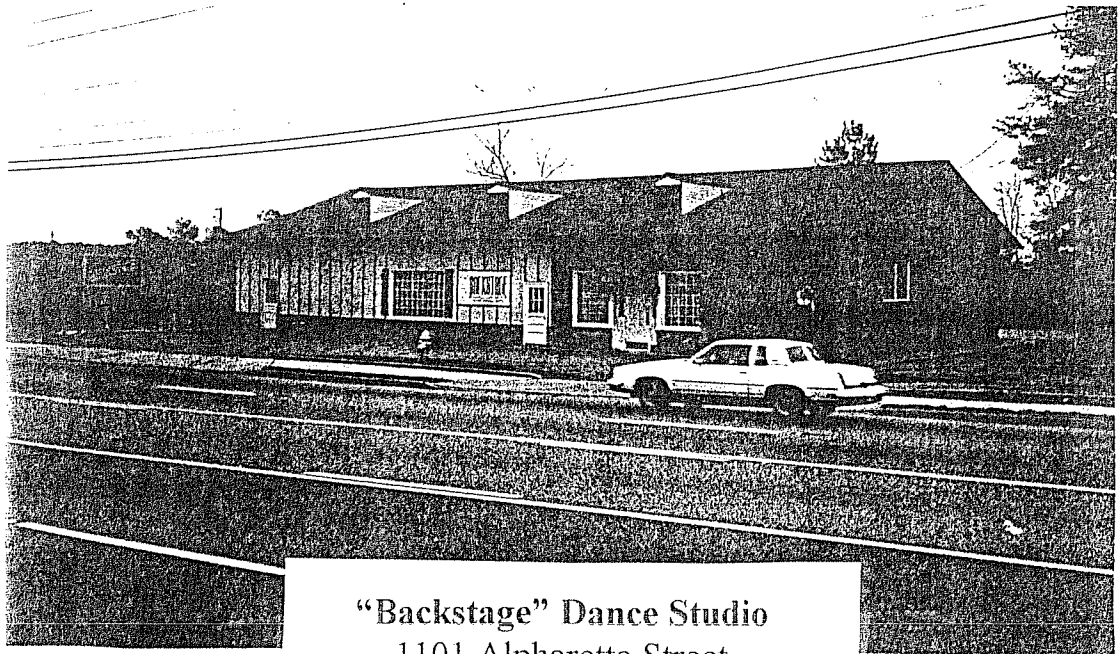
Rent - \$50 per Sunday



Roswell Funeral Home
590 Mimosa Blvd.
Roswell, GA 30075

September 2, 1984 - January 6, 1985

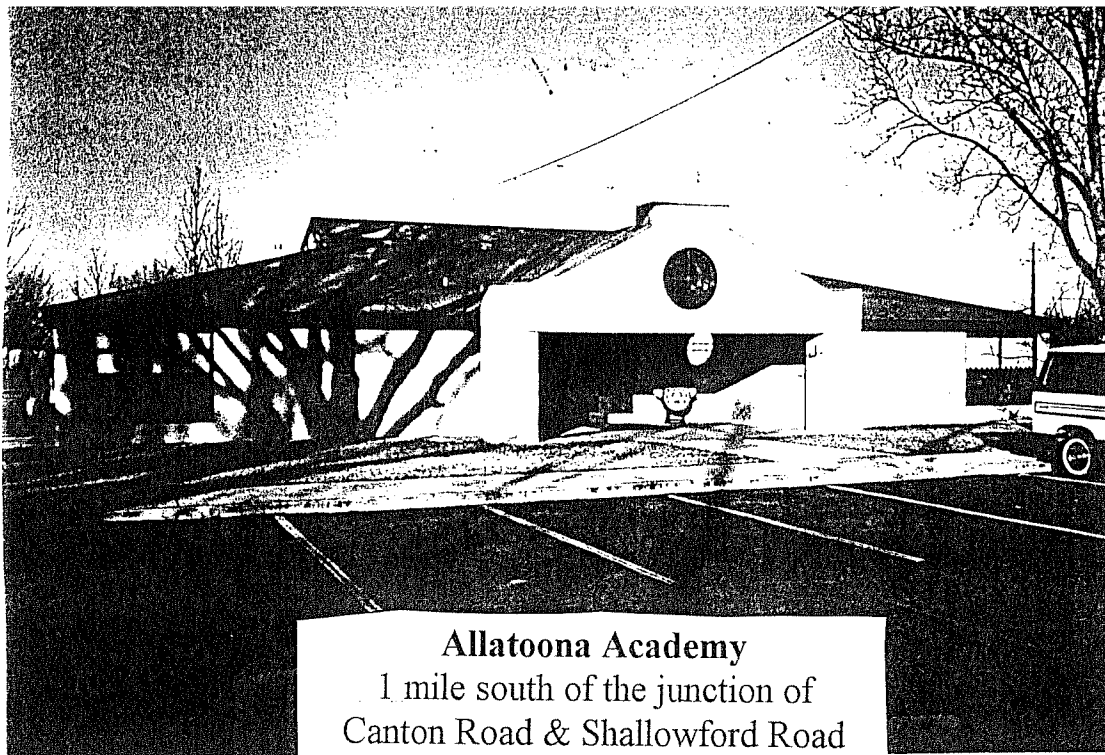
Rent - Free of Charge



"Backstage" Dance Studio
1101 Alpharetta Street
Roswell, GA 30075

January 6, 1985 - September 29, 1985

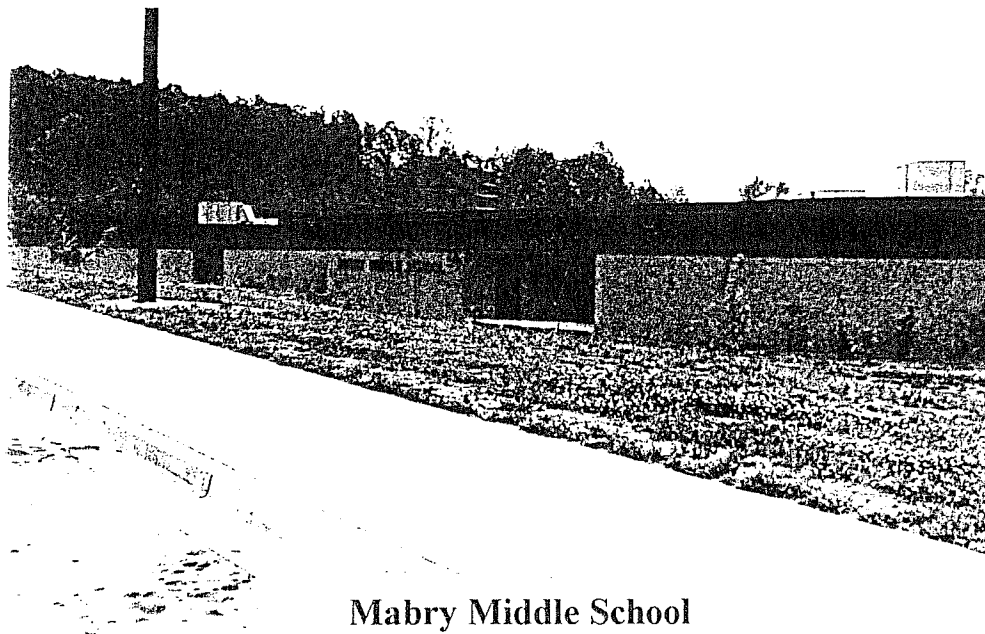
Rent - \$87.50 per week



Allatoona Academy
1 mile south of the junction of
Canton Road & Shallowford Road

October 6, 1985 - November 2, 1986

Rent - \$325 per month

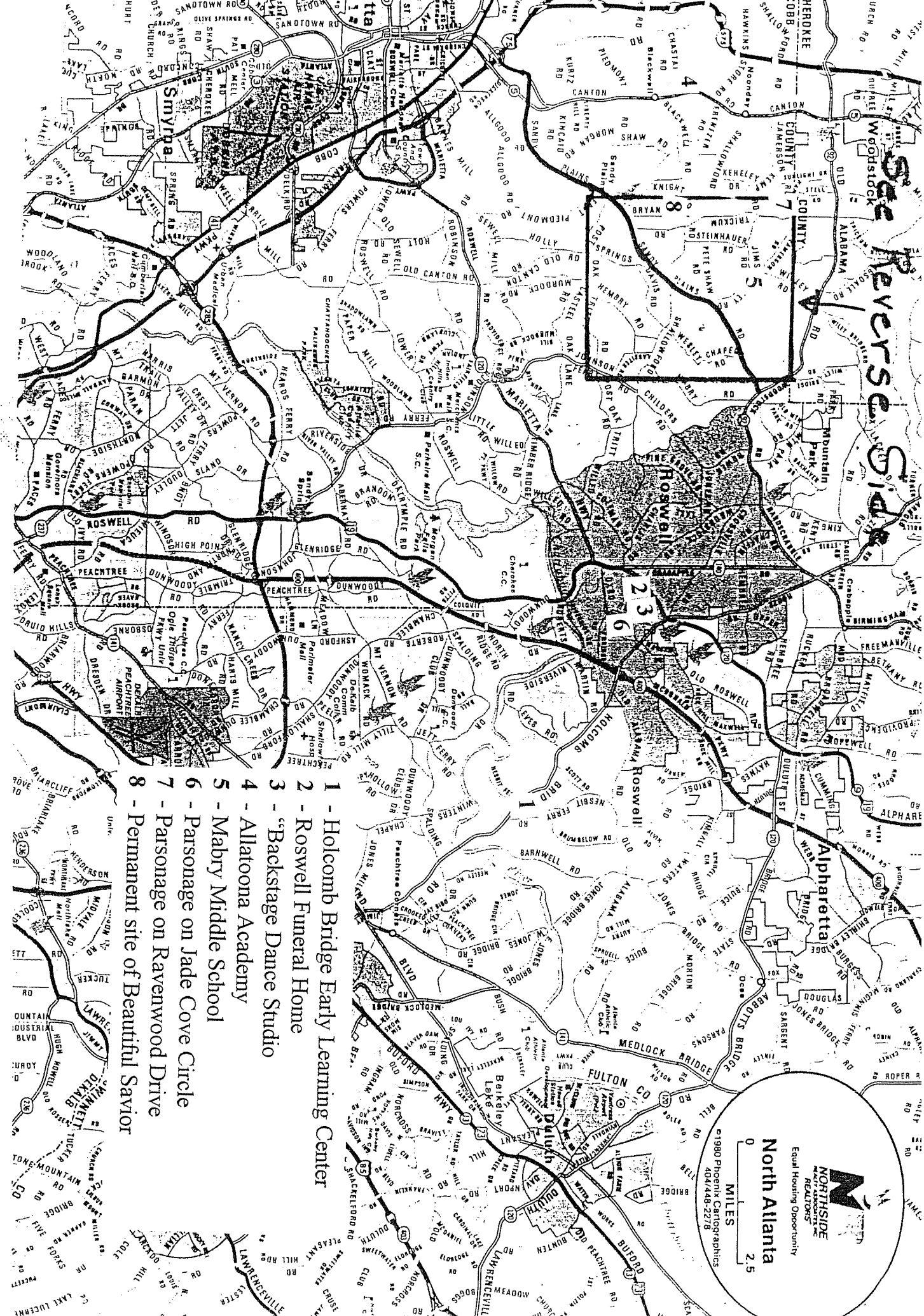


Mabry Middle School
2700 Jim's Road
Marietta, GA 30066


November 2, 1986 - July 3, 1988

Rent - \$300 per month

See Reverse Side



- 1 - Holcomb Bridge Early Learning Center
- 2 - Roswell Funeral Home
- 3 - "Backstage Dance Studio
- 4 - Allatoona Academy
- 5 - Mabry Middle School
- 6 - Parsonage on Jade Cove Circle
- 7 - Parsonage on Ravenwood Drive
- 8 - Permanent site of Beautiful Savior



NORTHSIDE
 REALTORS
 Equal Housing Opportunity
 0 2.5 MILES
 ©1980 Phoenix Cartographics
 404/448-2278

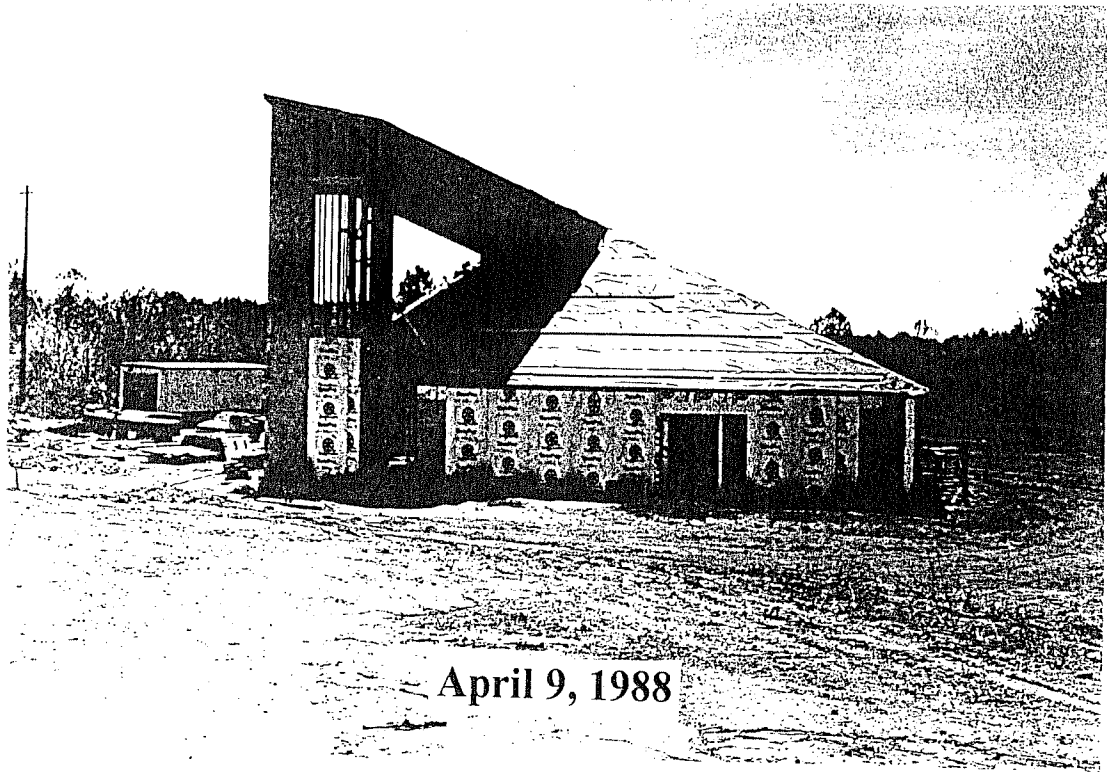
Beautiful Savior Church Construction



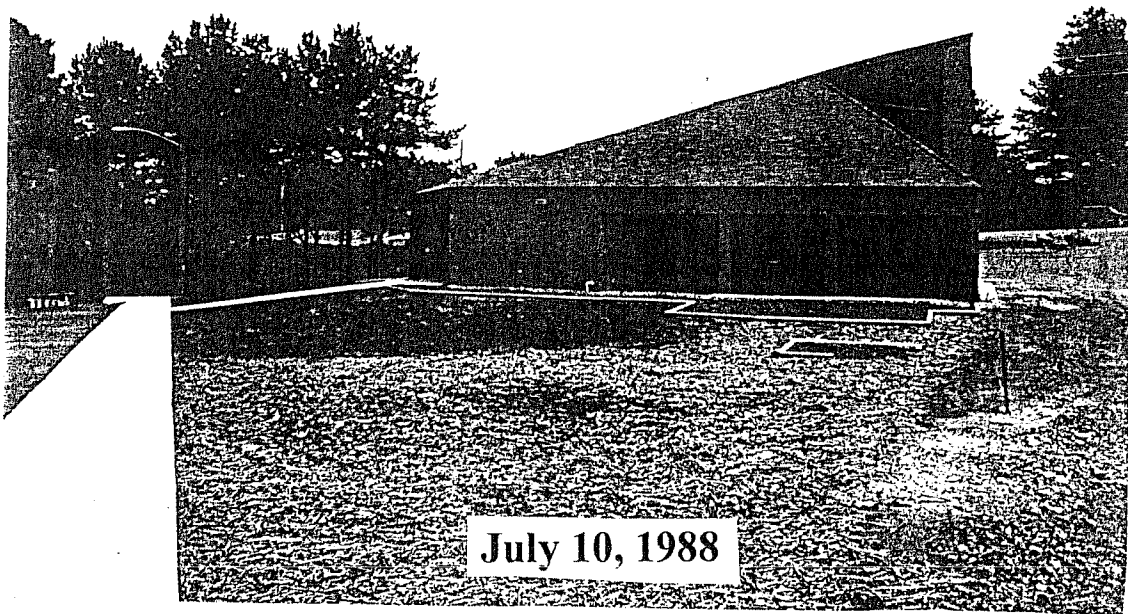
February 11, 1988



March 14, 1988



April 9, 1988



July 10, 1988

**SOLI DEO
GLORIA!**